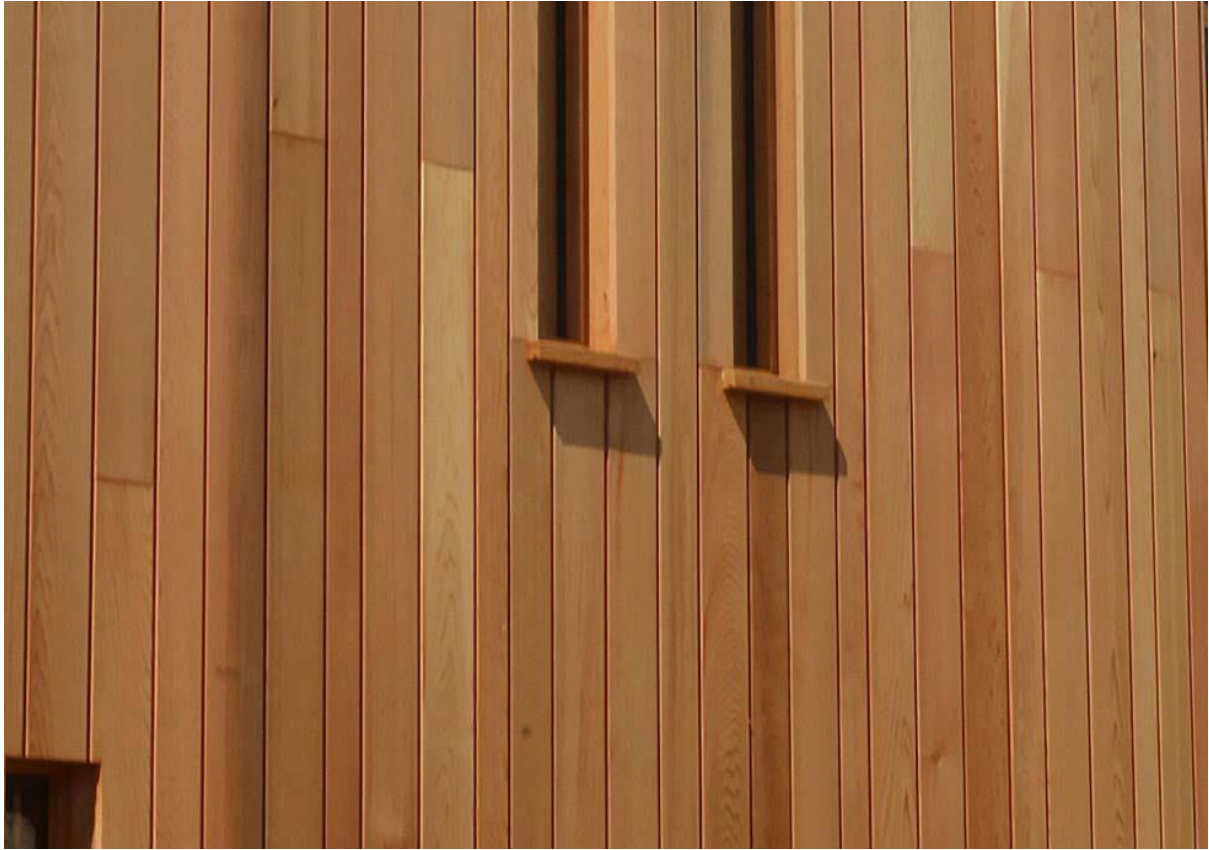


1205 - Barwickstead – Listed Building – Barn Conversion

Final Material Specification :

Wall Panelling to Ginnery



Sample Wood to Ginnery elevation - Western Red Cedar boarding
22mm thick
Air dried: 370 to 385kg/m³ (12% moisture)
Fixing – Secret fixed to timber frame behind

Gutter / down pipes :

Cast Iron Traditional Guttering existing refurbished / overhauled