

1 – From Jacktrees Rd – facing SE towards proposed access



2 – From Jacktrees Rd – facing E towards site



3 – From Jacktrees Rd – facing NE towards neighbouring property



4 - From Jacktrees Rd – facing east towards existing structures to be demolished



5 – from northern corner – facing SW across the site



7 – from NE boundary - facing NW



6 – from northern corner – facing SSE across the site

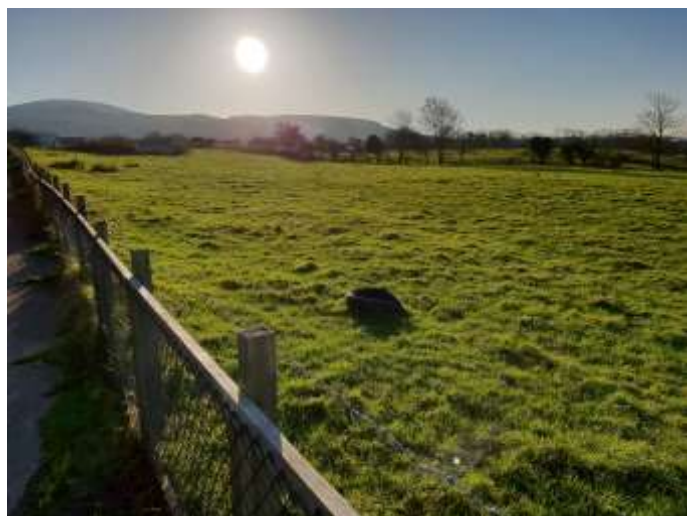


8 – from NE boundary - facing SW





9 – from NE boundary - facing SW across the site



11 – from eastern corner – facing SW across site boundary



10 – from eastern corner – facing NW across site boundary



12 – from eastern corner – facing S across site boundary



13 – from SE corner – facing south across corner of site



14 – from SE corner – facing west across site



15 – from SE corner – facing NW across site

