

## Copeland Local Plan 2021-2038 Examination: Proposals Map Modifications (February 2024)

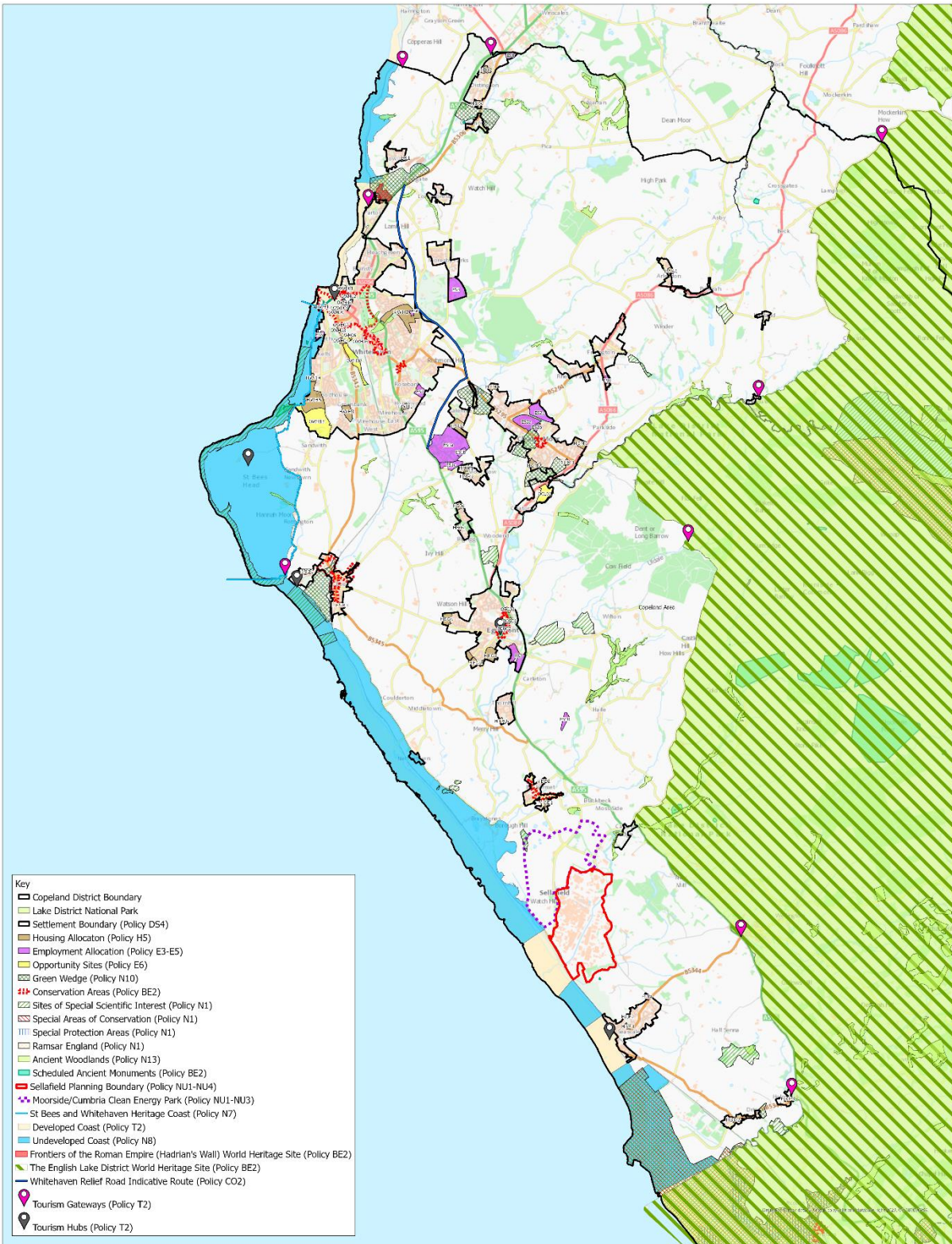
The following schedule and maps outline the proposed changes to the Copeland Local Plan 2021-2038 Proposals Map.

Whilst these modifications do not form part of the Inspector’s Main Modifications consultation we would welcome any comments on the proposed changes. Please send any comments, using the prescribed representation form, **no later than Thursday 28<sup>th</sup> March 2024**.

Ref	Location	Modification	Source for Modification
<b>Proposals Maps North and South (shown in Maps 1 and 2)</b>			
PM1	Map and Key	Amend Map and Key to include <i>The English Lake District World Heritage Site</i> and <i>Frontiers of the Roman Empire World Heritage Site</i>	Friends of the Lake District/CBC
PM2	Key	Remove ‘PD2021’ prefix from the following layers: <ul style="list-style-type: none"> <li>• Settlement Boundary</li> <li>• Housing Allocation</li> <li>• Employment Allocation</li> <li>• Opportunity Sites</li> </ul> <p>Also, put the relevant Policy(s) in brackets for each layer</p>	CBC
<b>Proposals Map North (shown in Map 1))</b>			
PM3	Settlement Boundary – Cleator Moor	Amend settlement boundary in Cleator Moor to include land at Crossfield Road	Landowner/CBC
PM4	Settlement Boundary – Egremont	Amend boundary to include full length of gardens at Dent View and Briscoe Road	CBC
PM5	Housing Allocation – Site HWH1	Amend boundaries of housing site HWH1	North Cumbria Integrated Care NHS Foundation Trust /CBC

<b>Ref</b>	<b>Location</b>	<b>Modification</b>	<b>Source for Modification</b>
PM6	Housing Allocation – Site HWH6	Remove reference as a Housing Allocation as the site now has planning permission, and re-categorise it to reflect that permission	Story Homes/CBC
<b>Proposals Map South (shown in Map 2)</b>			
PM7	Millom Castle	Update Conservation Areas to include recently adopted Millom Castle Conservation Area	CBC -
PM8	Green wedge polygon at Moor Farm, Millom	Amend Green Wedge boundary to exclude all of housing allocation at Moor Farm, Millom (HMI2) and remove overlap	Brookhouse/CBC to resolve Action Point 52

# Map 1: Updated Proposals Map North



- Key**
- ▭ Copeland District Boundary
  - ▭ Lake District National Park
  - ▭ Settlement Boundary (Policy DS4)
  - ▭ Housing Allocation (Policy H5)
  - ▭ Employment Allocation (Policy E3-E5)
  - ▭ Opportunity Sites (Policy E6)
  - ▭ Green Wedge (Policy N10)
  - ▭ Conservation Areas (Policy BE2)
  - ▭ Sites of Special Scientific Interest (Policy N1)
  - ▭ Special Areas of Conservation (Policy N1)
  - ▭ Special Protection Areas (Policy N1)
  - ▭ Ramsar England (Policy N1)
  - ▭ Ancient Woodlands (Policy N13)
  - ▭ Scheduled Ancient Monuments (Policy BE2)
  - ▭ Sellafeld Planning Boundary (Policy NU1-NU4)
  - ▭ Moorside/Cumbria Clean Energy Park (Policy NU1-NU3)
  - ▭ St Bees and Whitehaven Heritage Coast (Policy N7)
  - ▭ Developed Coast (Policy T2)
  - ▭ Undeveloped Coast (Policy N8)
  - ▭ Frontiers of the Roman Empire (Hadrian's Wall) World Heritage Site (Policy BE2)
  - ▭ The English Lake District World Heritage Site (Policy BE2)
  - ▭ Whitehaven Relief Road Indicative Route (Policy CO2)
  - 📍 Tourism Gateways (Policy T2)
  - 📍 Tourism Hubs (Policy T2)

Copeland Local Plan 2021-2038 Modified Proposals Map  
Proposals Map South Copeland

Copeland Borough Council  
The Market Hall  
Market Place  
Whitehaven  
Cumbria, CA28 3JG

Date of Issue: 12/02/2024

Scale: 1:38,000



## Map 2: Updated Proposals Map South

