

Copeland Local Plan 2017-2035

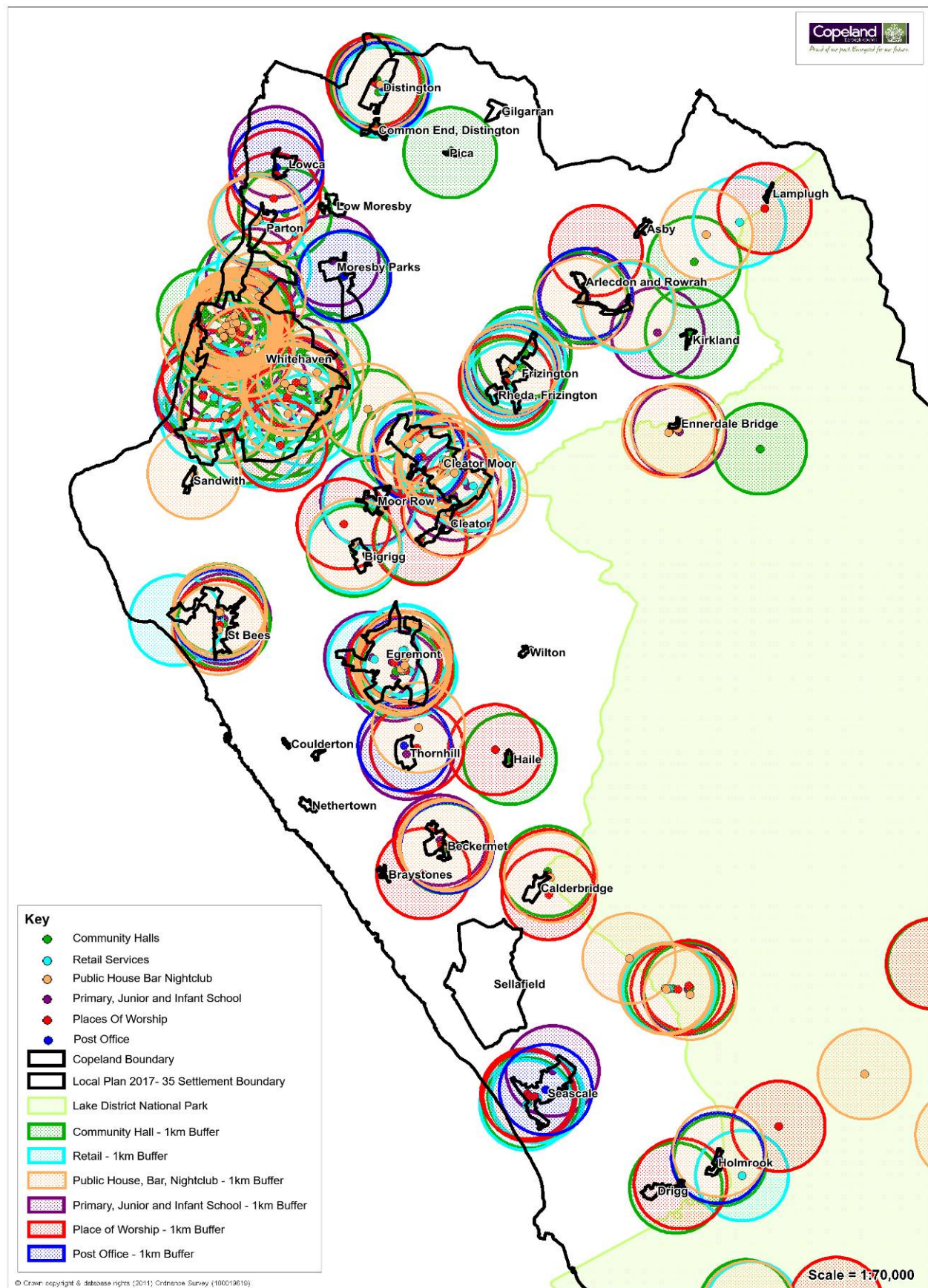
Issues and Options Draft - Appendices Document

November 2019

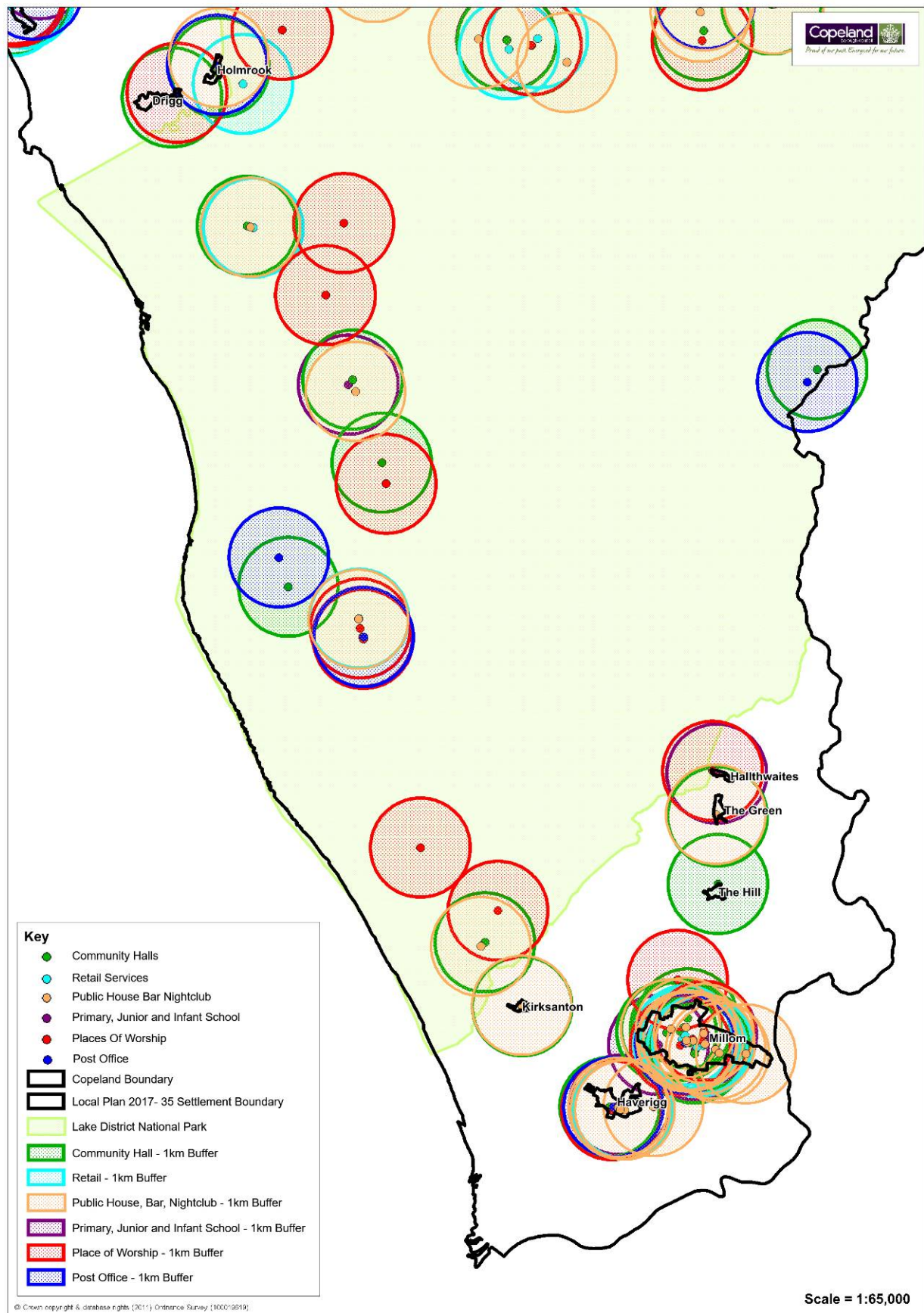
Contents

Appendix A: Settlement Services and 1km Buffer - North Copeland	4
Appendix B: Settlement Services and 1km Buffer - South Copeland	5
Appendix C: Potential Areas for Growth - Whitehaven	6
Appendix D: Potential Growth Options - Cleator Moor	7
Appendix E: Potential Growth Options - Egremont	8
Appendix F: Potential Growth Options - Millom	9
Appendix G: Current Whitehaven Town Centre Boundary	10
Appendix H: Whitehaven Town Centre Boundary Option 2	11
Appendix I: Whitehaven Town Centre Boundary Option 3	12
Appendix J: Whitehaven Town Centre Boundary Option 4	13
Appendix K: Use Class Definitions (C/O Planning Portal)	14
Appendix L: Egremont Town Centre Boundary	16
Appendix M: Millom Town Centre Boundary	17
Appendix N: Cleator Moor Town Centre Boundary	18
Appendix O: Whitehaven Primary Frontages	19
Appendix P: Whitehaven Conservation Area	20
Appendix Q: Cleator Moor Conservation Area	21
Appendix R: Egremont Conservation Area	22
Appendix S: Millom Conservation Area	23
Appendix T: North West SMP Area	24
Appendix U: Natura 2000 Sites	25
Appendix V: Marine Conservation Area	26
Appendix W: Areas of Ancient Woodland	27
Appendix X: Developed and Undeveloped Coast	28
Appendix Y: Proposed Heritage Coast	29
Appendix Z: Heritage Assets	30
Appendix AA: Electric Vehicle Charging Points	31
Appendix BB: Major Road Networks	32

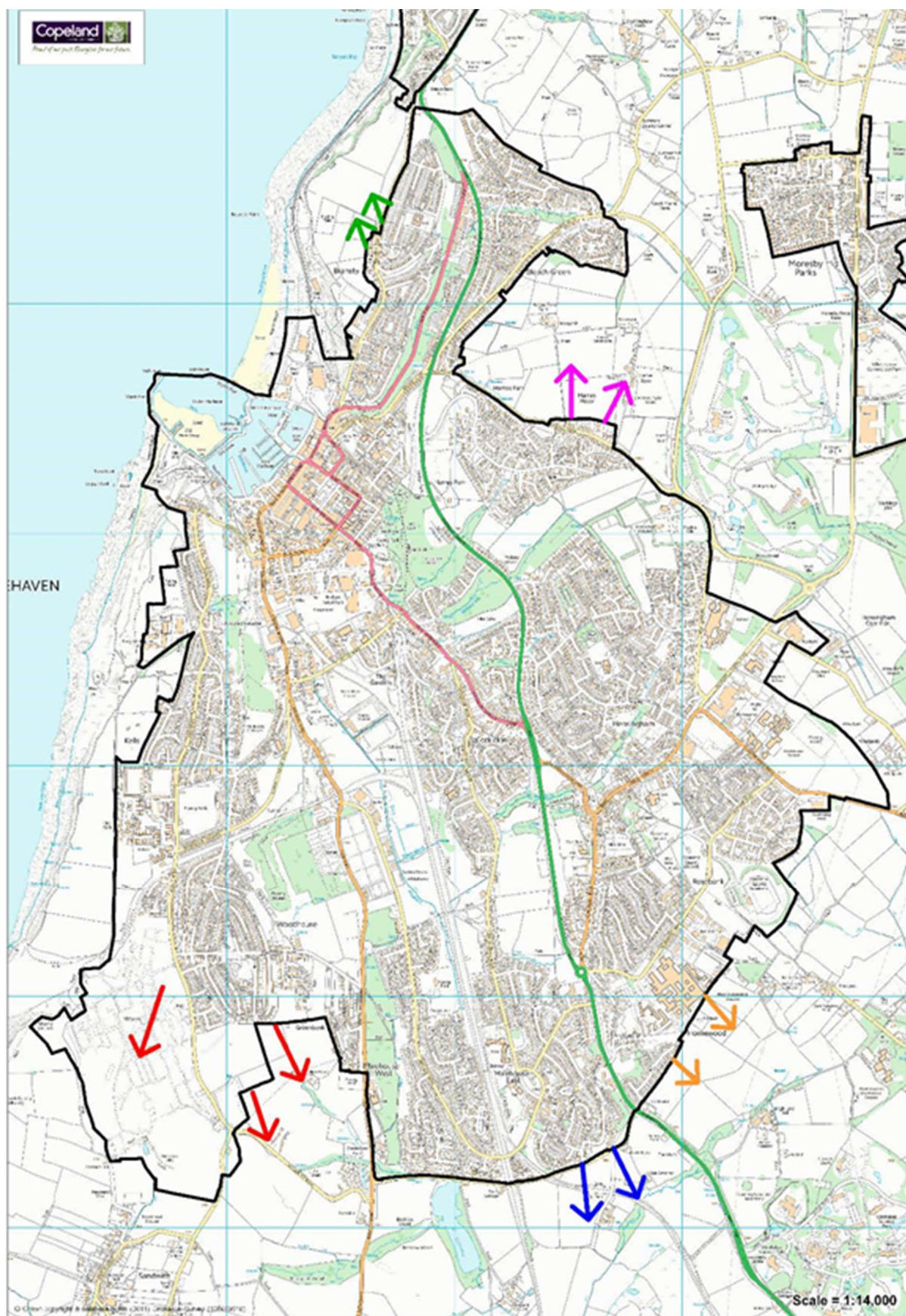
Appendix A: Settlement Services and 1km Buffer - North Copeland



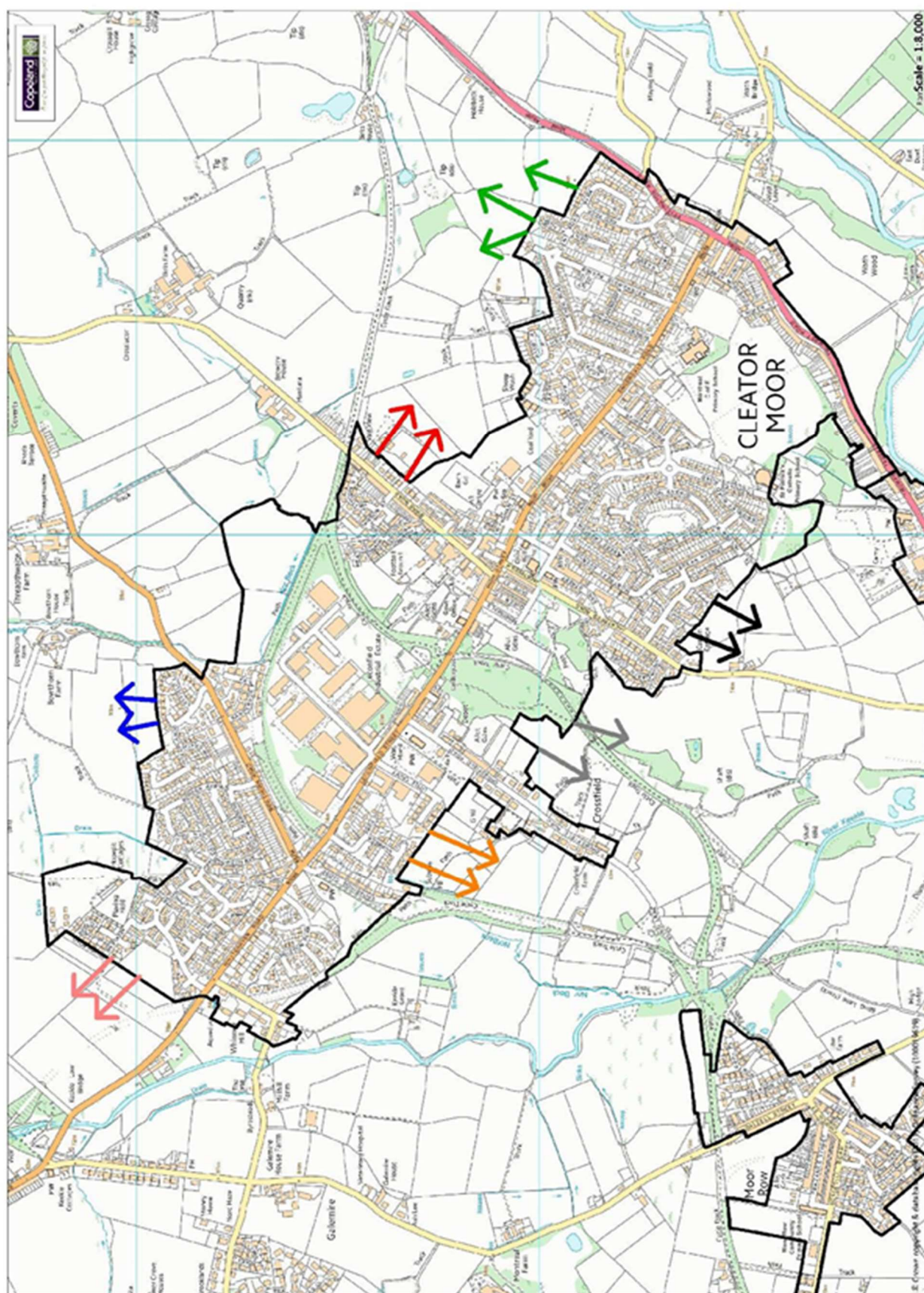
Appendix B: Settlement Services and 1km Buffer - South Copeland



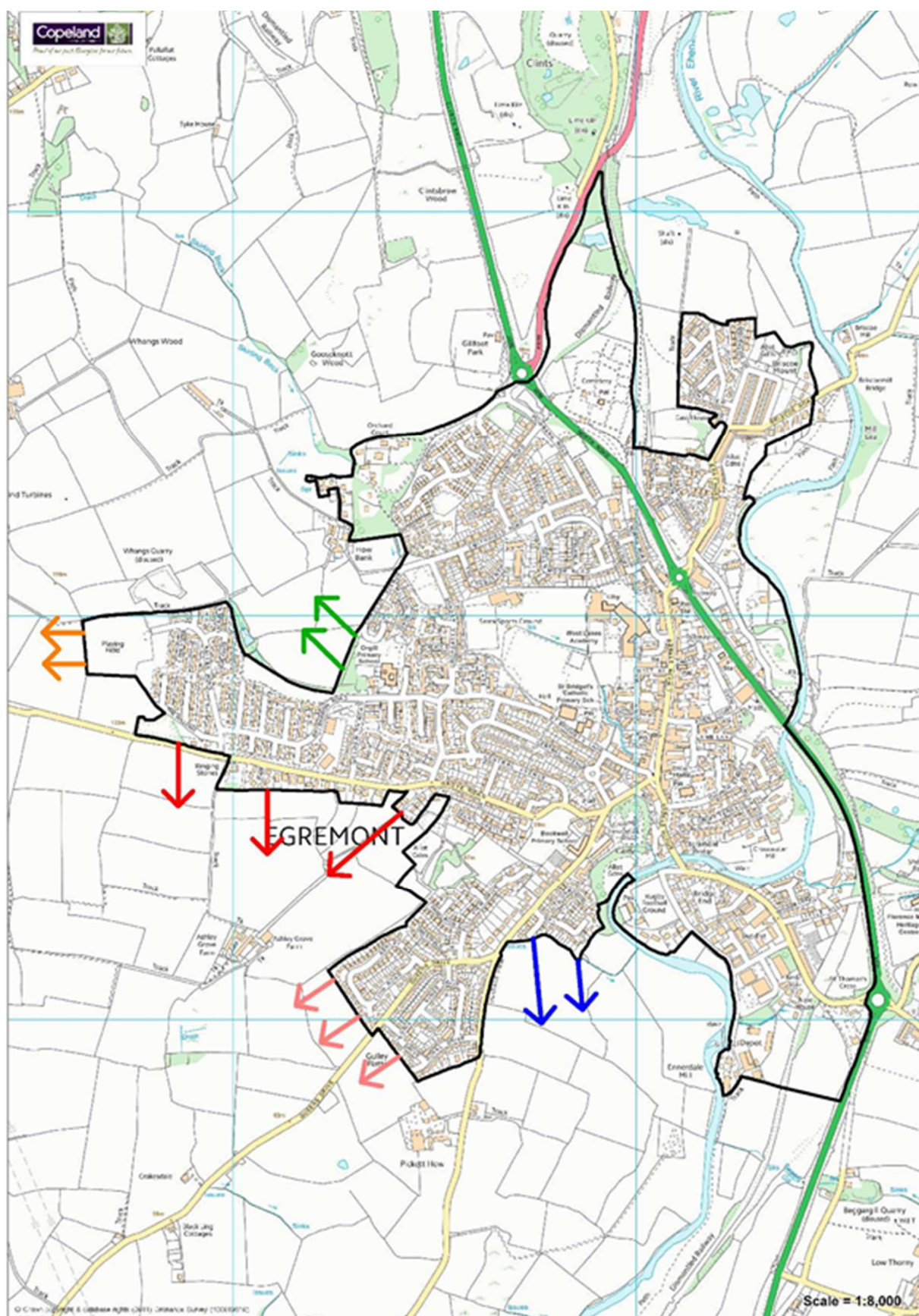
Appendix C: Potential Areas for Growth - Whitehaven



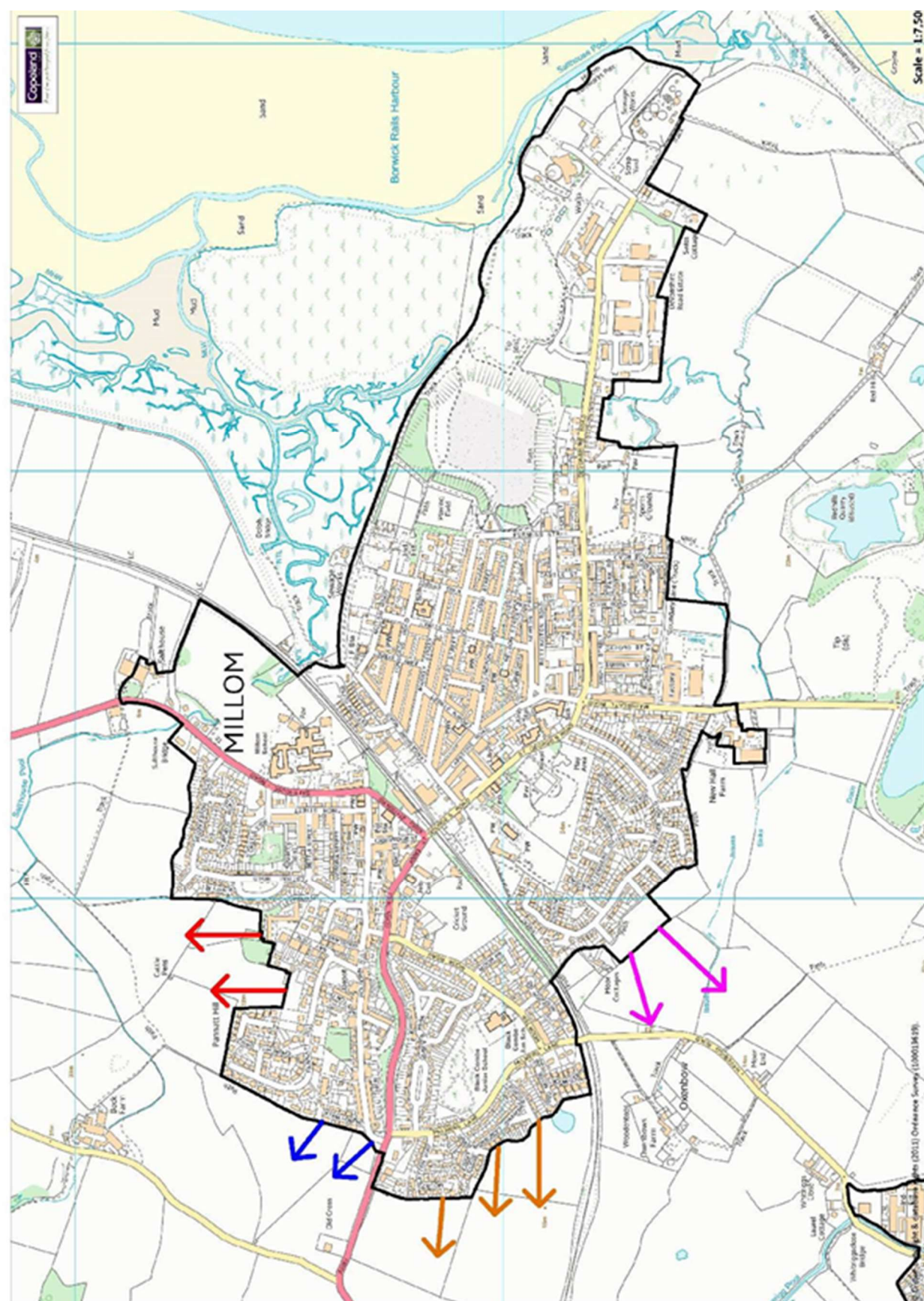
Appendix D: Potential Growth Options - Cleator Moor



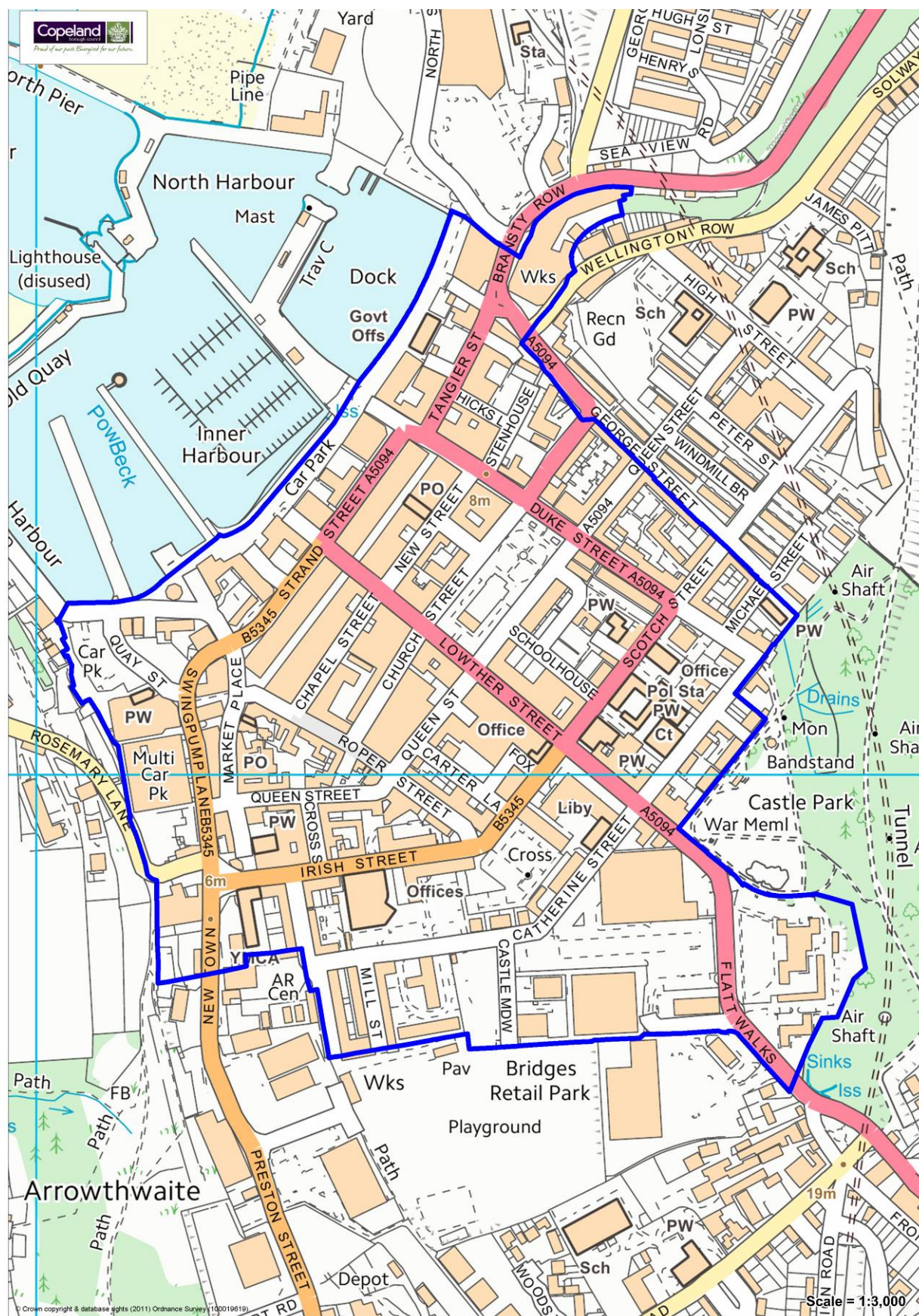
Appendix E: Potential Growth Options - Egremont



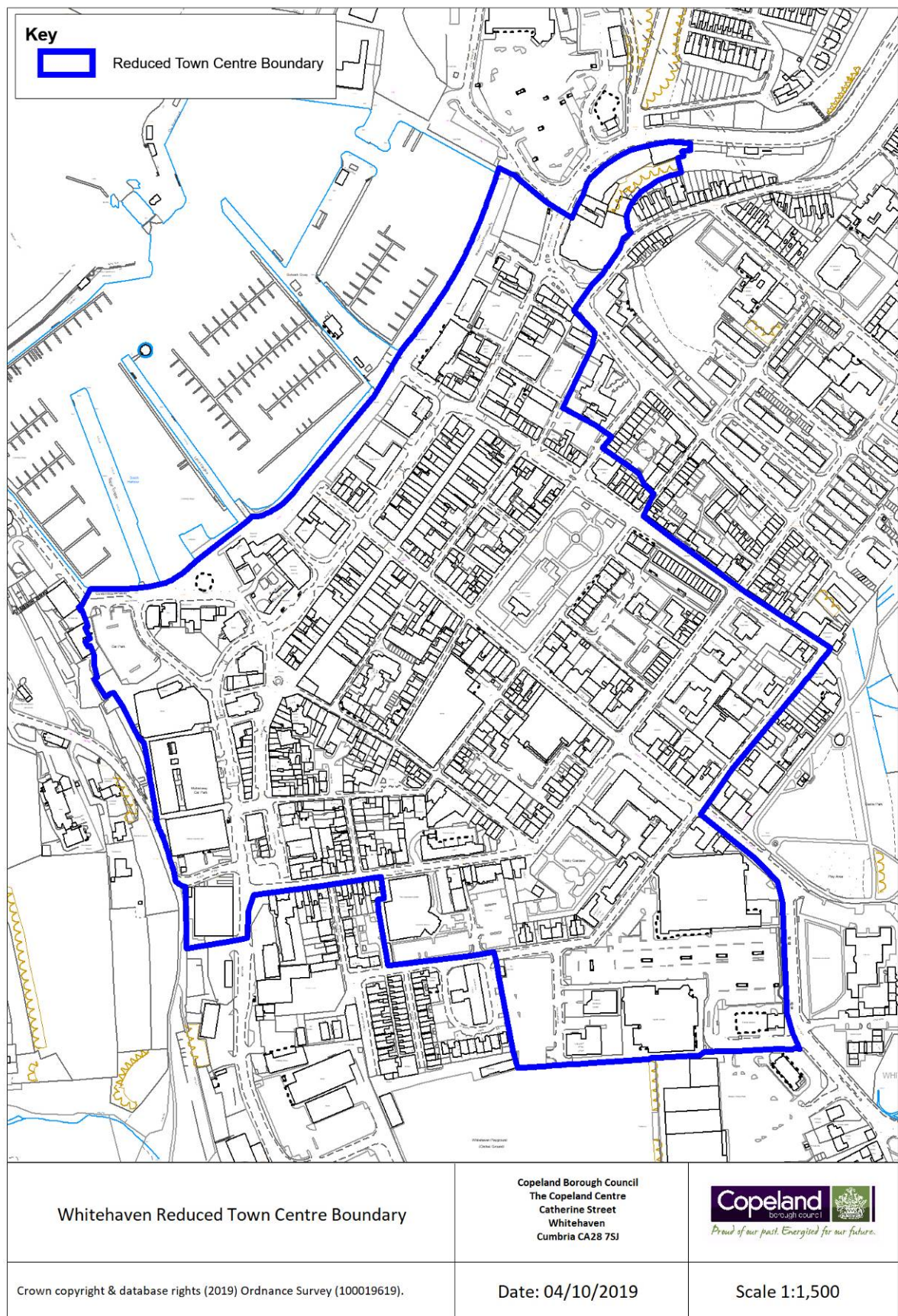
Appendix F: Potential Growth Options - Millom



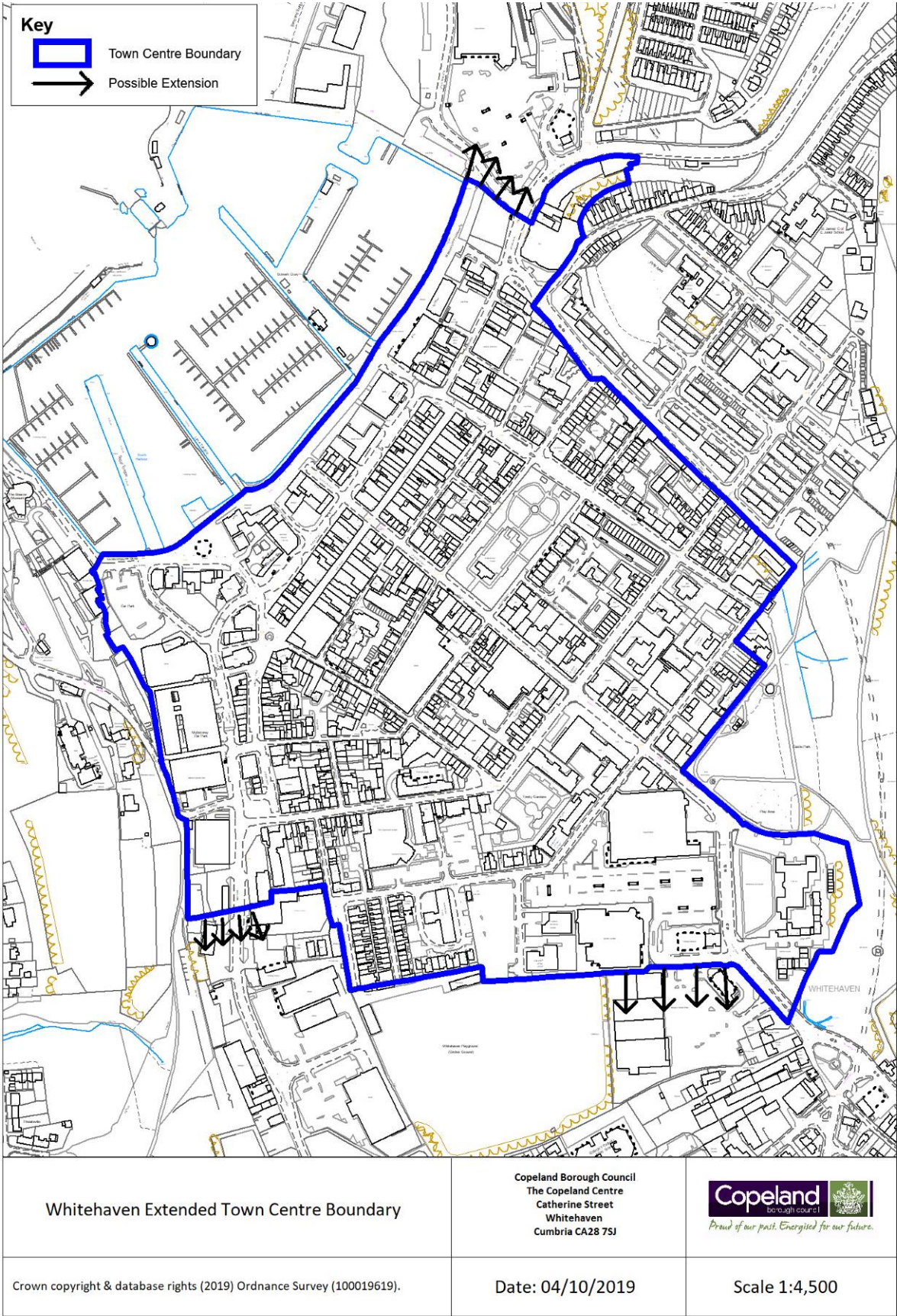
Appendix G: Current Whitehaven Town Centre Boundary



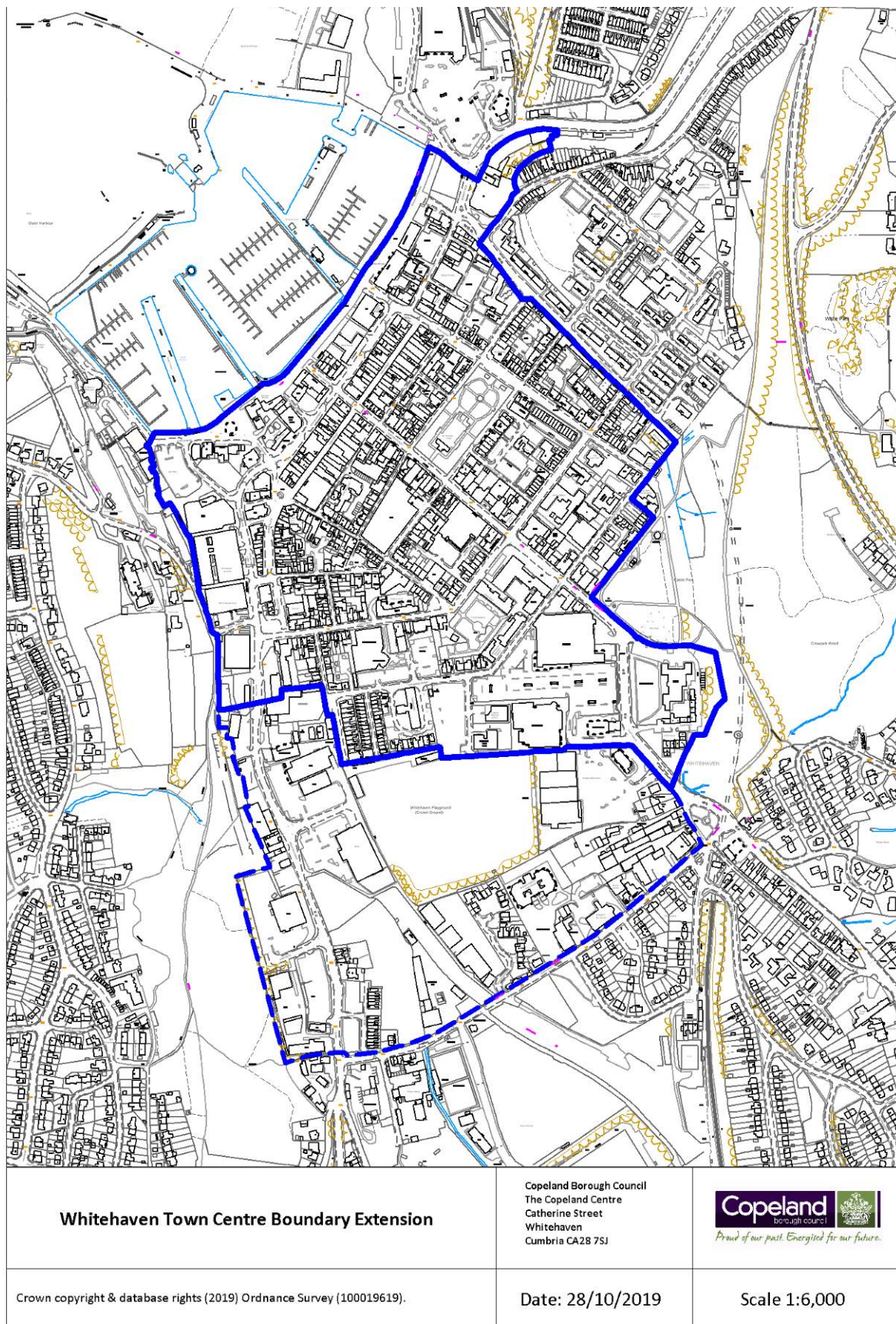
Appendix H: Whitehaven Town Centre Boundary Option 2



Appendix I: Whitehaven Town Centre Boundary Option 3



Appendix J: Whitehaven Town Centre Boundary Option 4



Appendix K: Use Class Definitions (C/O Planning Portal)

Part A

- A1 Shops - Shops, retail warehouses, hairdressers, undertakers, travel and ticket agencies, post offices, pet shops, sandwich bars, showrooms, domestic hire shops, dry cleaners, funeral directors and internet cafes
- A2 Financial and professional services - Financial services such as banks and building societies, professional services (other than health and medical services) and including estate and employment agencies. It does not include betting offices or pay day loan shops - these are now classed as “sui generis” uses (see below)
- A3 Restaurants and cafés - For the sale of food and drink for consumption on the premises - restaurants, snack bars and cafes
- A4 Drinking establishments - Public houses, wine bars or other drinking establishments (but not night clubs) including drinking establishments with expanded food provision
- A5 Hot food takeaways - For the sale of hot food for consumption off the premises.

Part B

- B1 Business - Offices (other than those that fall within A2), research and development of products and processes, light industry appropriate in a residential area
- B2 General industrial - Use for industrial process other than one falling within class B1 (excluding incineration purposes, chemical treatment or landfill or hazardous waste)
- B8 Storage or distribution - This class includes open air storage.

Part C

- C1 Hotels - Hotels, boarding and guest houses where no significant element of care is provided (excludes hostels)
- C2 Residential institutions - Residential care homes, hospitals, nursing homes, boarding schools, residential colleges and training centres
- C2A Secure Residential Institution - Use for a provision of secure residential accommodation, including use as a prison, young offenders institution, detention centre, secure training centre, custody centre, short term holding centre, secure hospital, secure local authority accommodation or use as a military barracks
- C3 Dwellinghouses - This class is formed of three parts
 - C3(a) covers use by a single person or a family (a couple whether married or not, a person related to one another with members of the family of one of the couple to be treated as members of the family of the other), an employer and certain domestic employees (such as an au pair, nanny, nurse, governess, servant, chauffeur, gardener, secretary and personal assistant), a carer and the person receiving the care and a foster parent and foster child

- C3(b) covers up to six people living together as a single household and receiving care e.g. supported housing schemes such as those for people with learning disabilities or mental health problems
- C3(c) allows for groups of people (up to six) living together as a single household. This allows for those groupings that do not fall within the C4 HMO definition, but which fell within the previous C3 use class, to be provided for i.e. a small religious community may fall into this section as could a homeowner who is living with a lodger
- C4 Houses in multiple occupation - Small shared houses occupied by between three and six unrelated individuals, as their only or main residence, who share basic amenities such as a kitchen or bathroom.

Part D

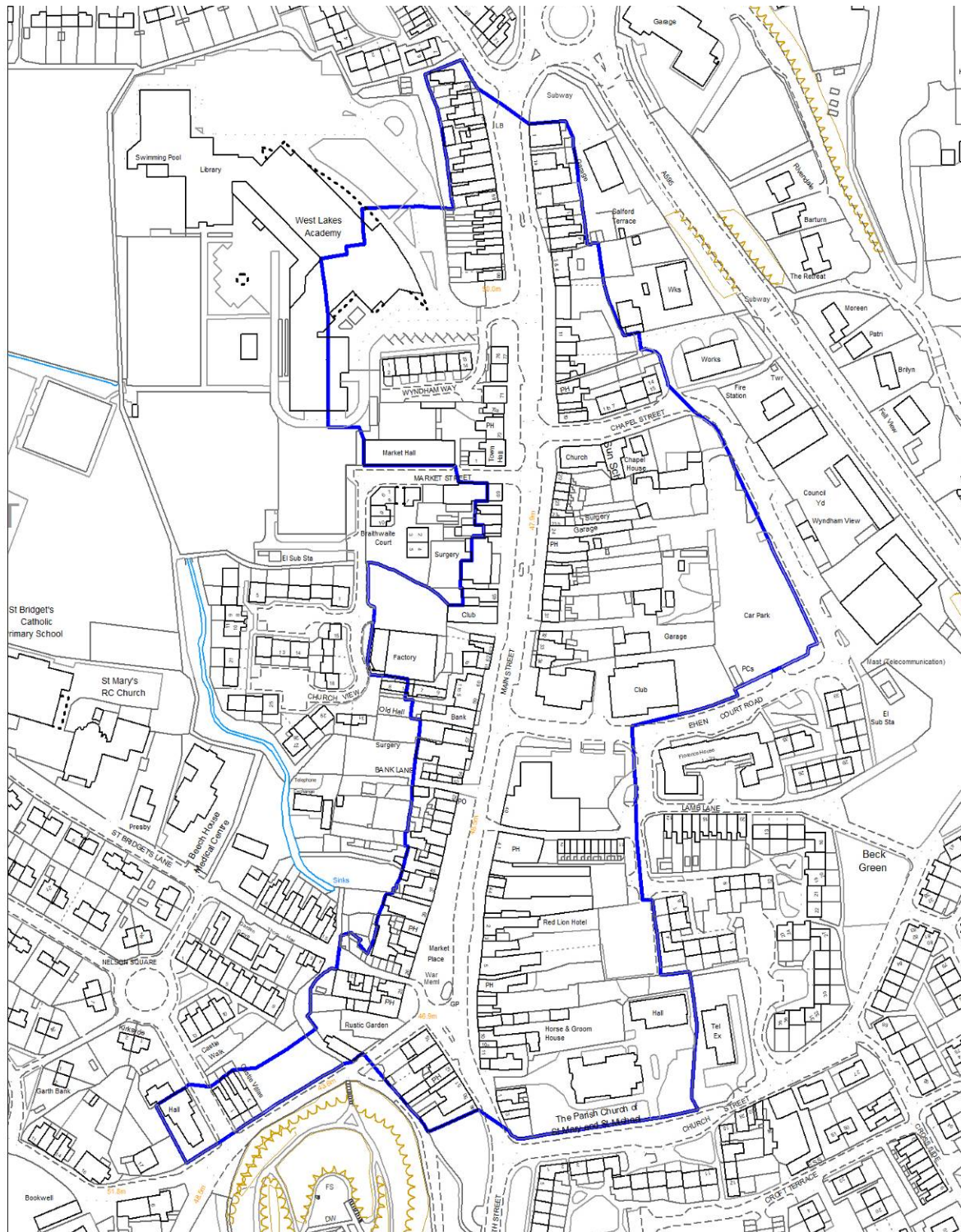
- D1 Non-residential institutions - Clinics, health centres, crèches, day nurseries, day centres, schools, art galleries (other than for sale or hire), museums, libraries, halls, places of worship, church halls, law court. Non-residential education and training centres
- D2 Assembly and leisure - Cinemas, music and concert halls, bingo and dance halls (but not night clubs), swimming baths, skating rinks, gymnasiums or area for indoor or outdoor sports and recreations (except for motor sports, or where firearms are used).

Sui Generis

- Certain uses do not fall within any use class and are considered 'sui generis'. Such uses include: betting offices/shops, pay day loan shops, theatres, larger houses in multiple occupation, hostels providing no significant element of care, scrap yards. Petrol filling stations and shops selling and/or displaying motor vehicles. Retail warehouse clubs, nightclubs, launderettes, taxi businesses and casinos.

Before you negotiate a lease or buy a property for your business, check whether you need to obtain planning permission for your intended use, and, if so, your chances of getting it.

Appendix L: Egremont Town Centre Boundary



Egremont Town Centre Boundary

Copeland Borough Council
The Copeland Centre
Catherine Street
Whitehaven
Cumbria CA28 7SJ

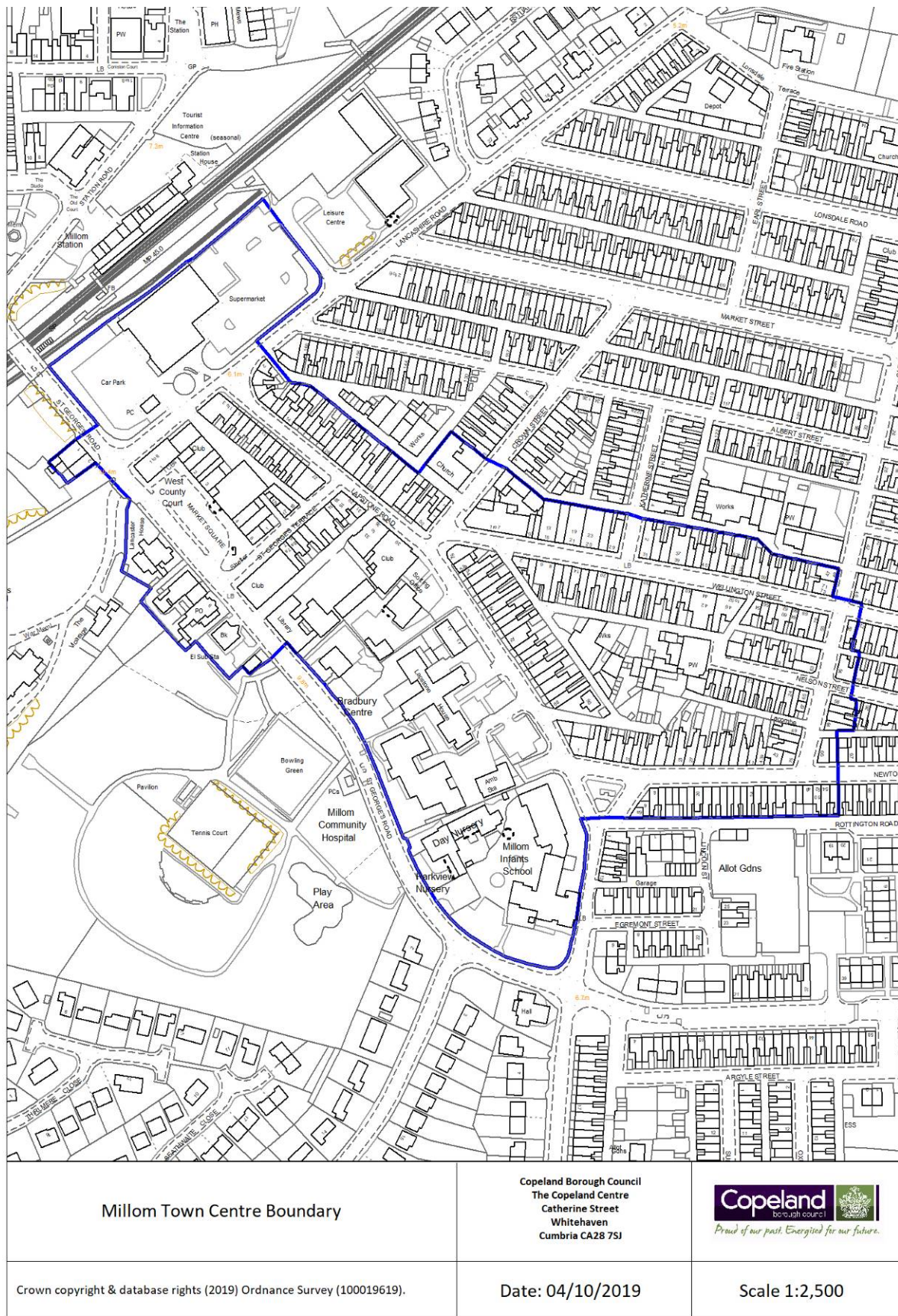


Crown copyright & database rights (2019) Ordnance Survey (100019619).

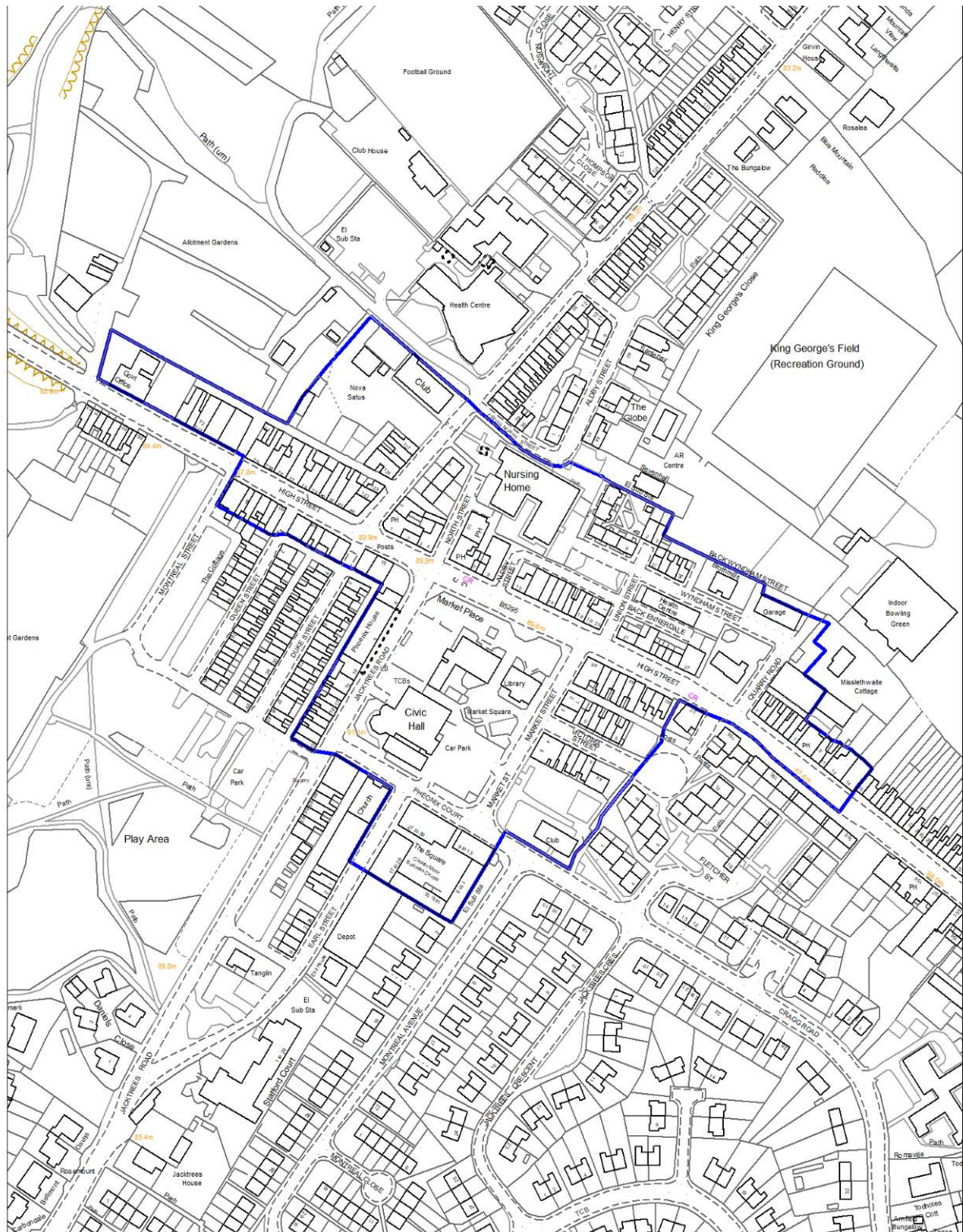
Date: 04/10/2019

Scale 1:2,500

Appendix M: Millom Town Centre Boundary

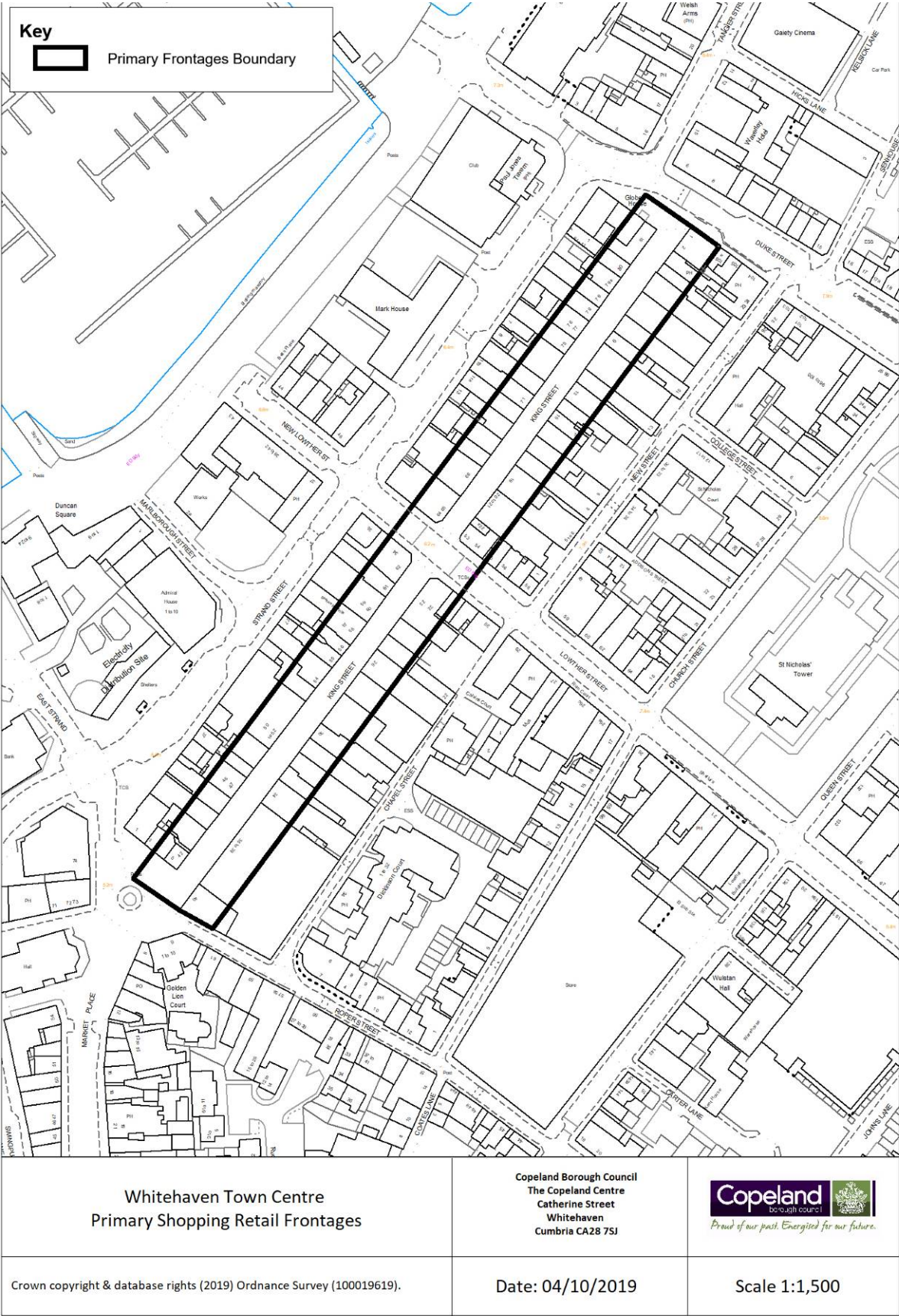


Appendix N: Cleator Moor Town Centre Boundary



<p>Cleator Moor Town Centre Boundary</p>	<p>Copeland Borough Council The Copeland Centre Catherine Street Whitehaven Cumbria CA28 7SJ</p>	<p>Copeland borough council <i>Proud of our past. Energized for our future.</i></p>
<p>Crown copyright & database rights (2019) Ordnance Survey (100019619).</p>	<p>Date: 04/10/2019</p>	<p>Scale 1:2,500</p>

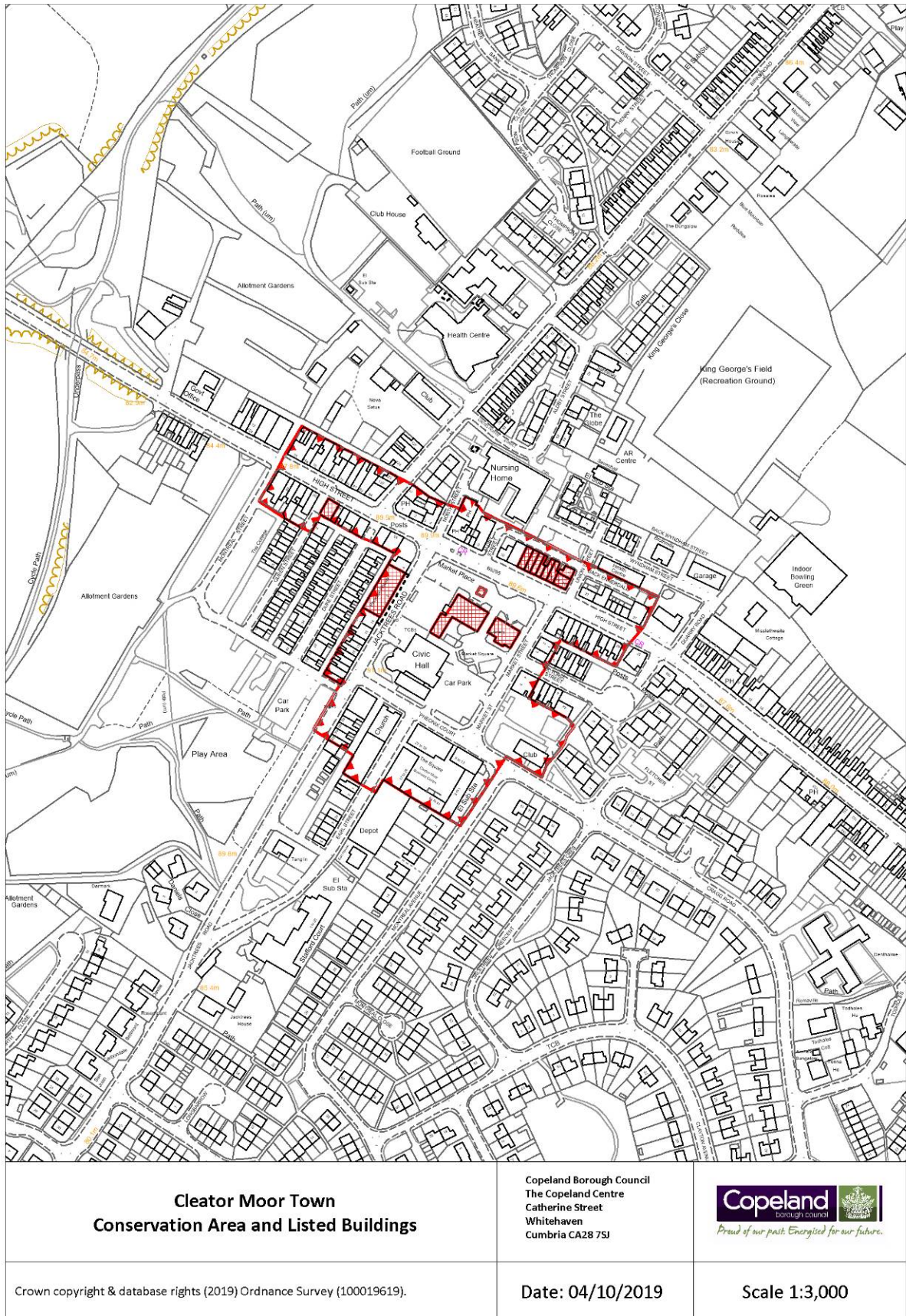
Appendix O: Whitehaven Primary Frontages



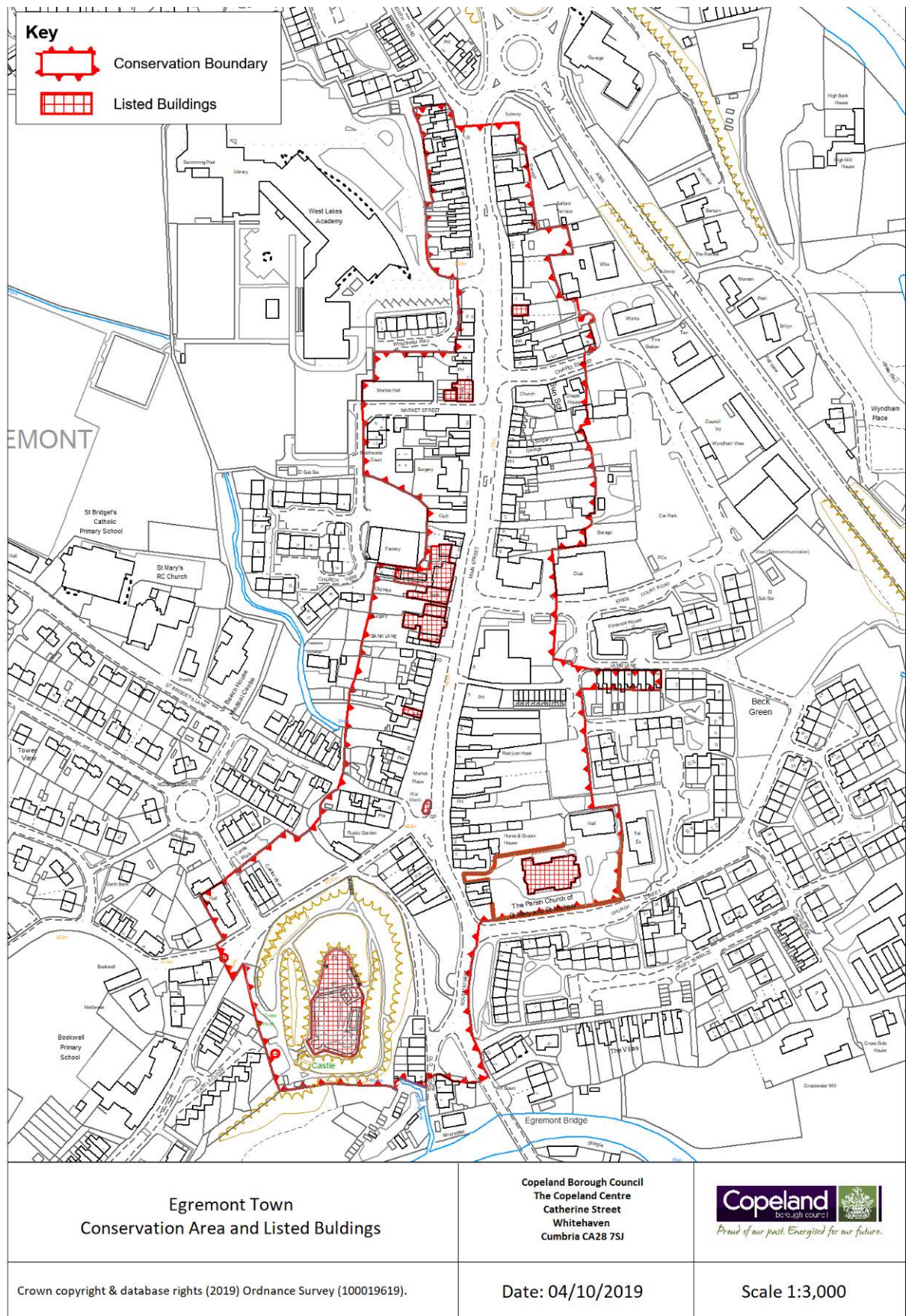
Appendix P: Whitehaven Conservation Area



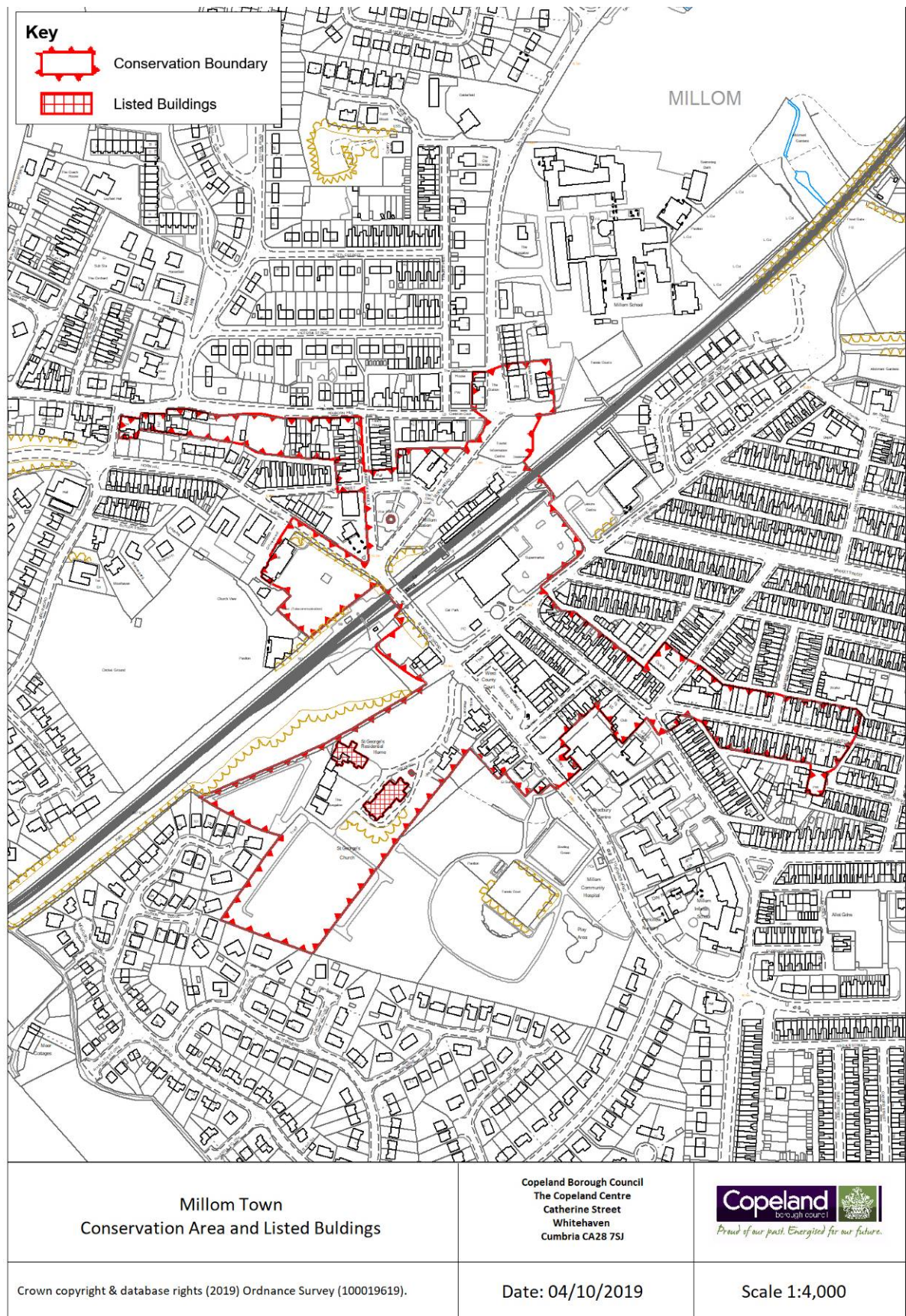
Appendix Q: Cleator Moor Conservation Area



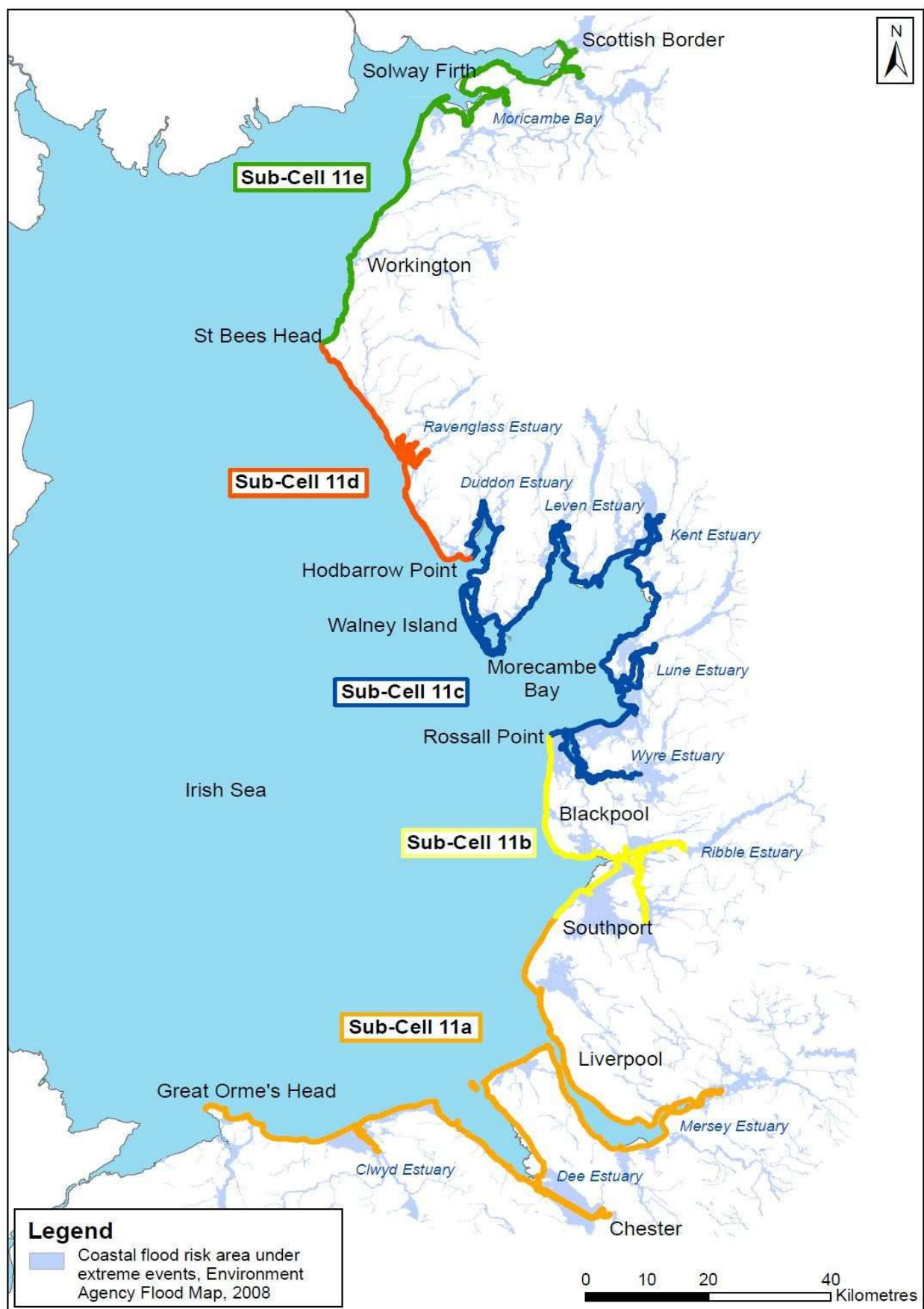
Appendix R: Egremont Conservation Area



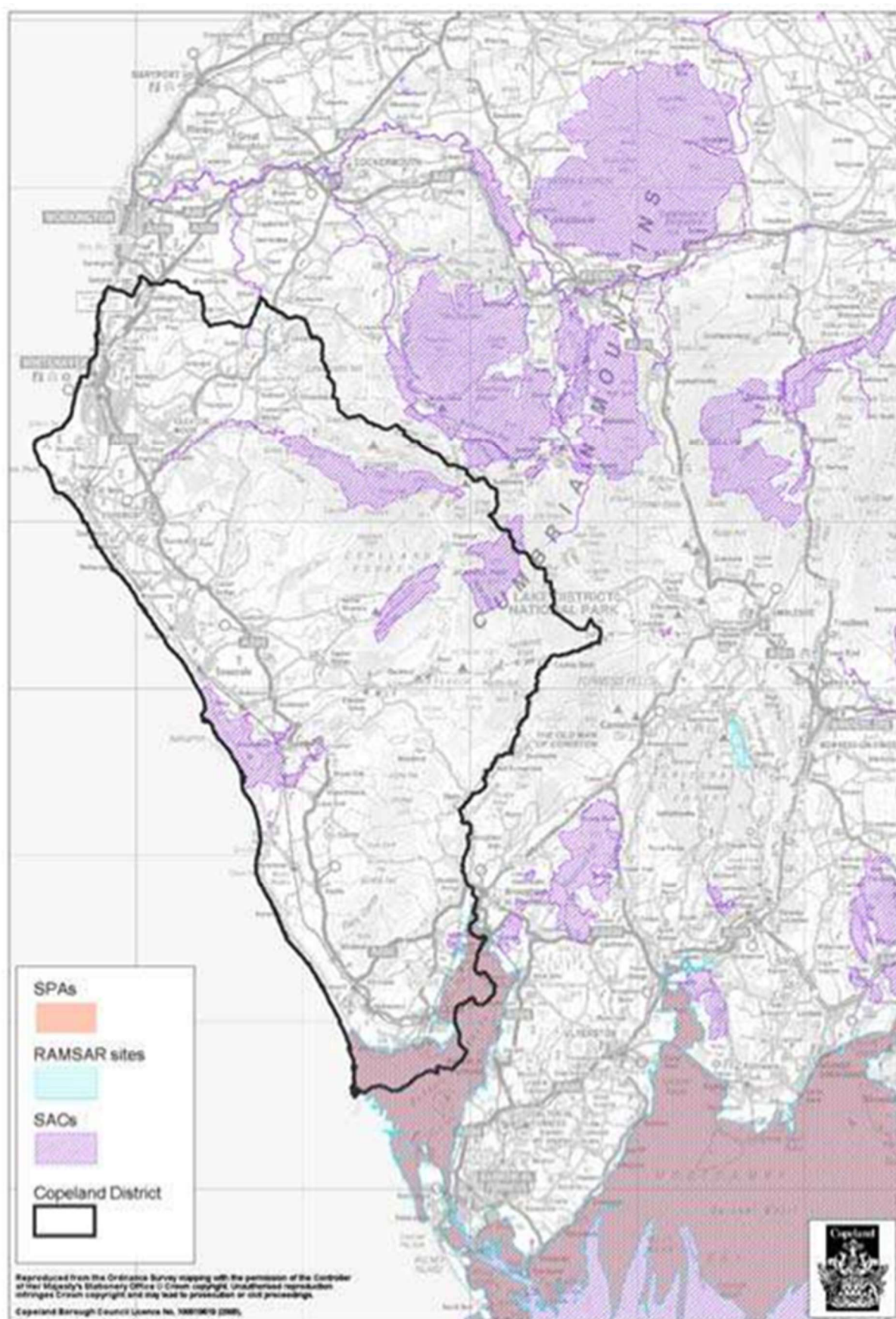
Appendix S: Millom Conservation Area



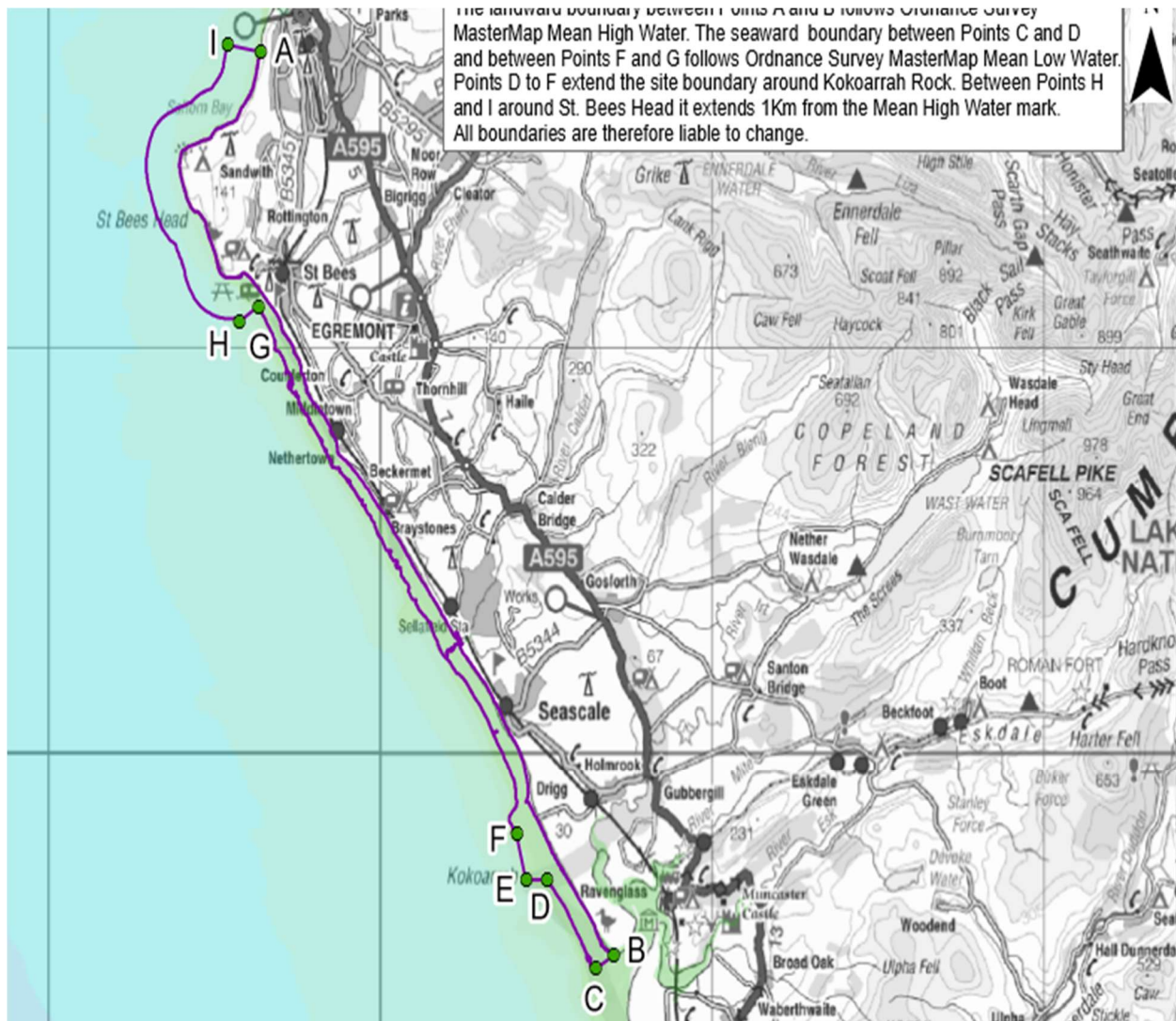
Appendix T: North West SMP Area



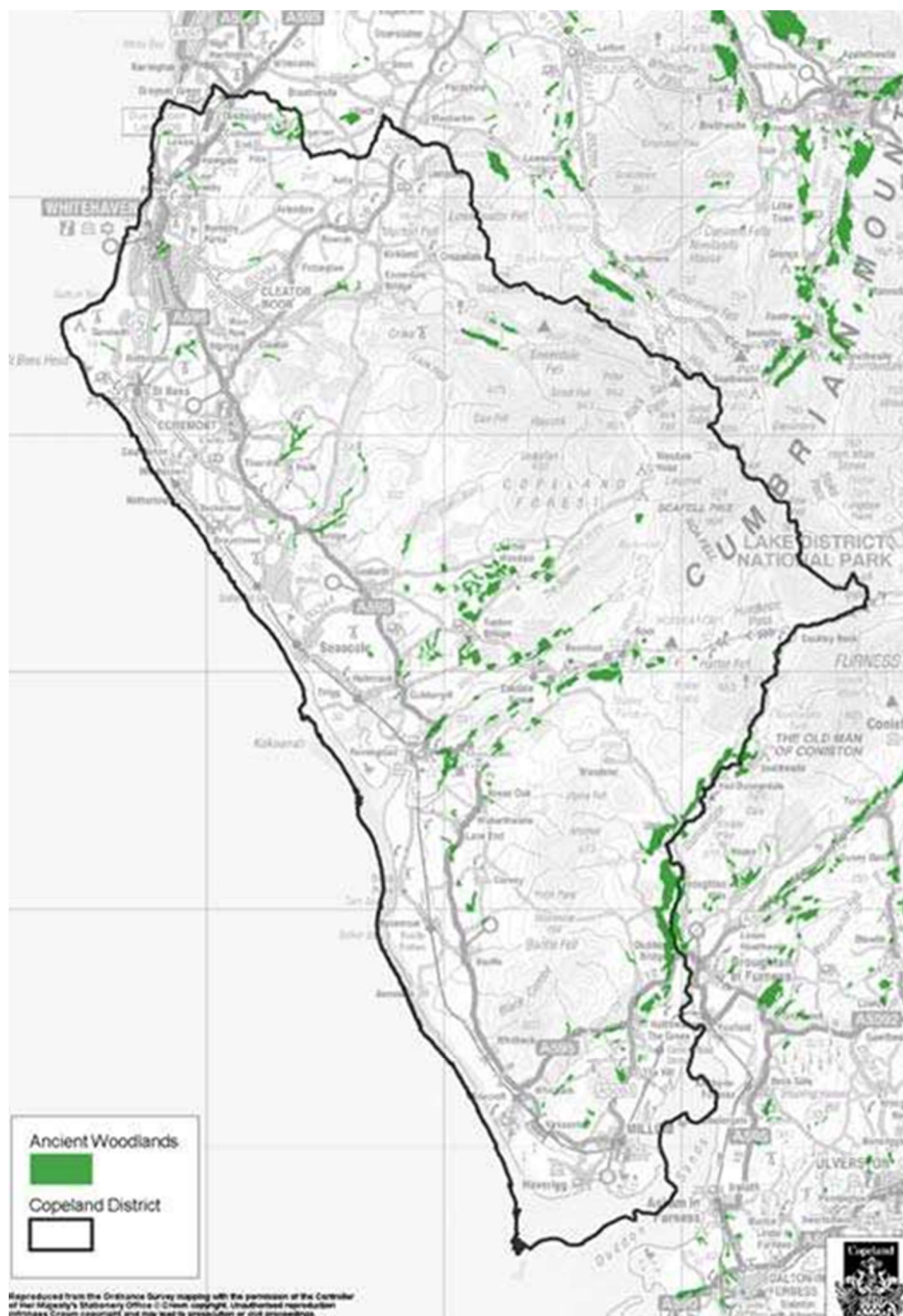
Appendix U: Natura 2000 Sites



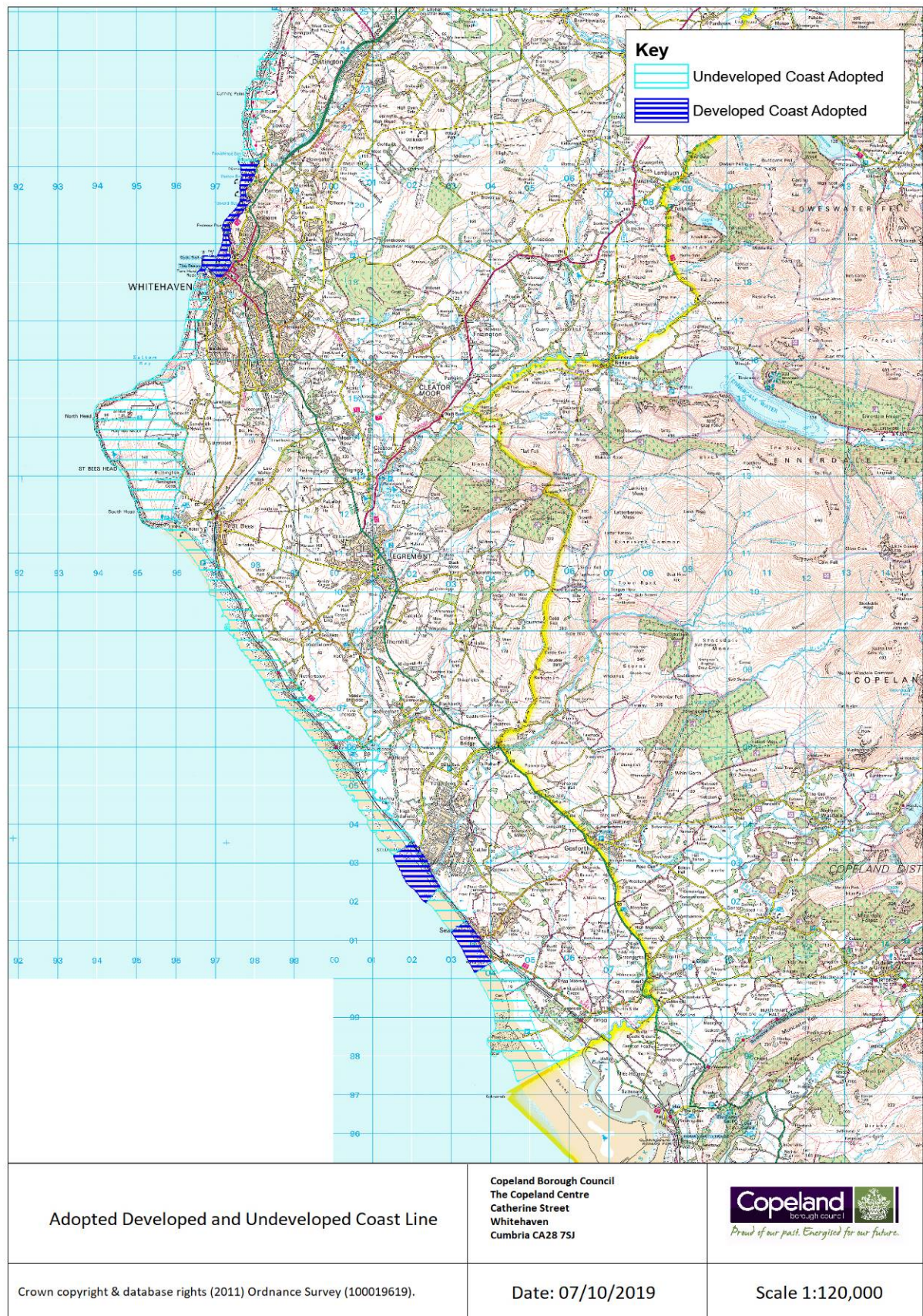
Appendix V: Marine Conservation Area



Appendix W: Areas of Ancient Woodland



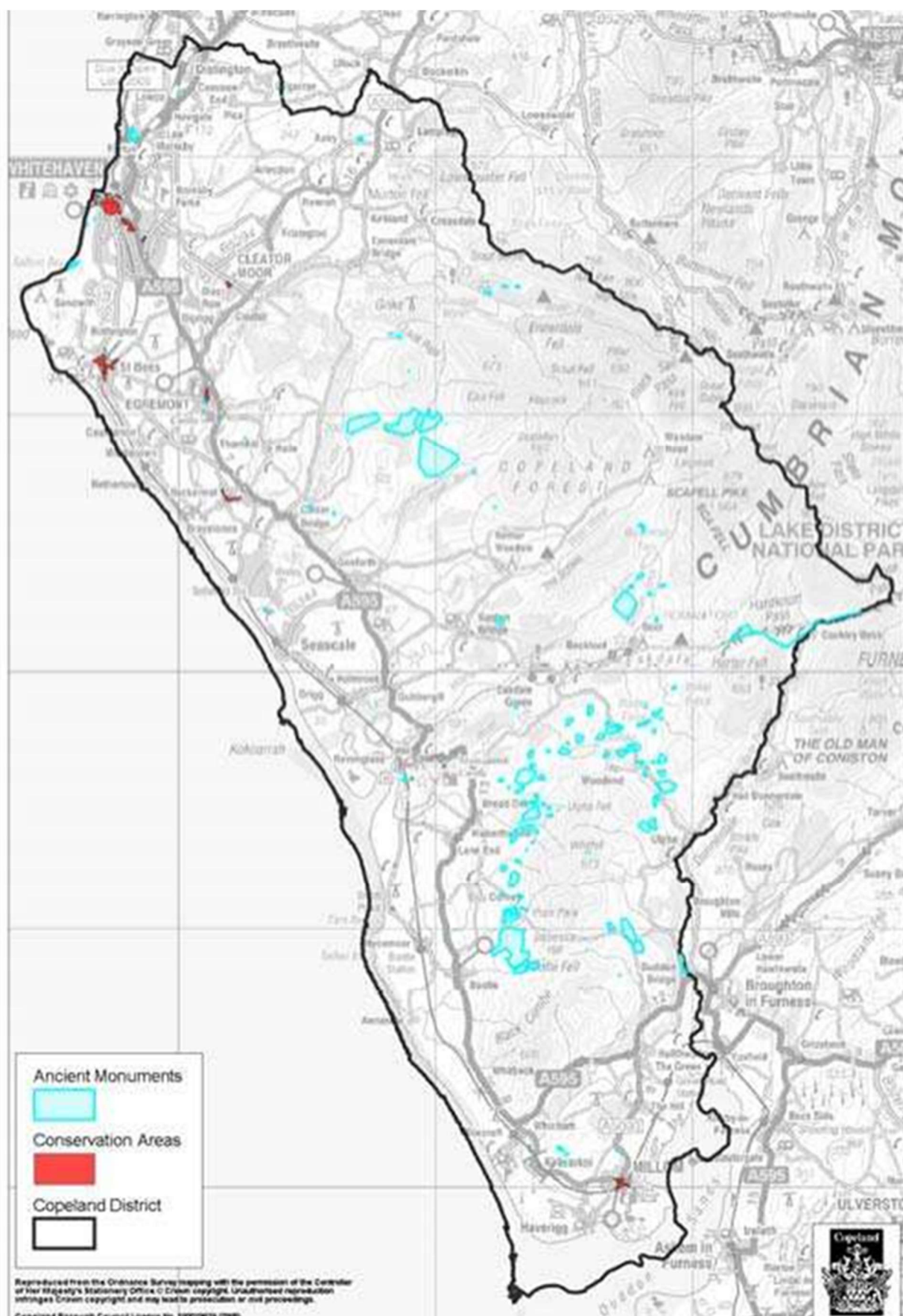
Appendix X: Developed and Undeveloped Coast



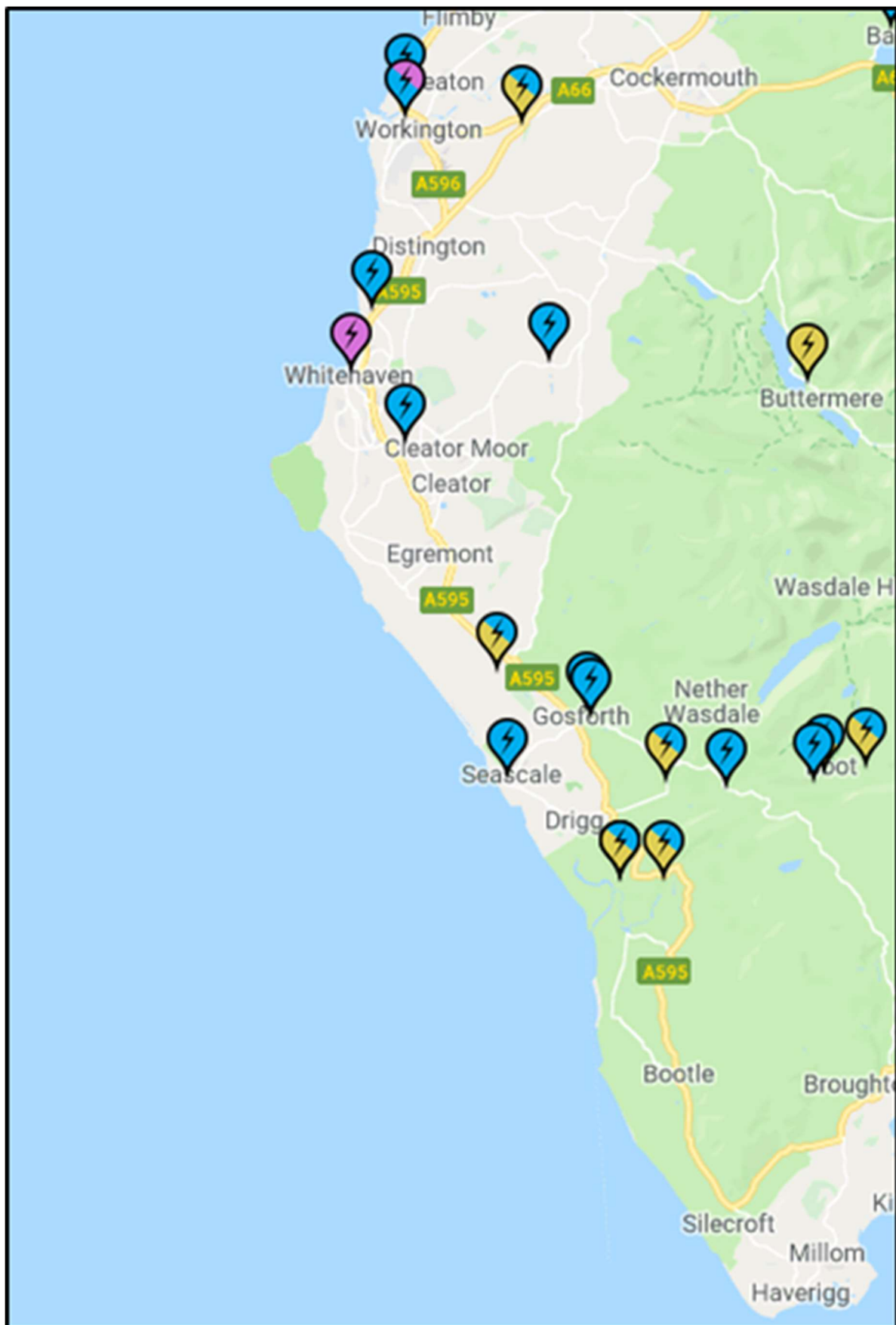
Appendix Y: Proposed Heritage Coast



Appendix Z: Heritage Assets



Appendix AA: Electric Vehicle Charging Points



Appendix BB: Major Road Networks

