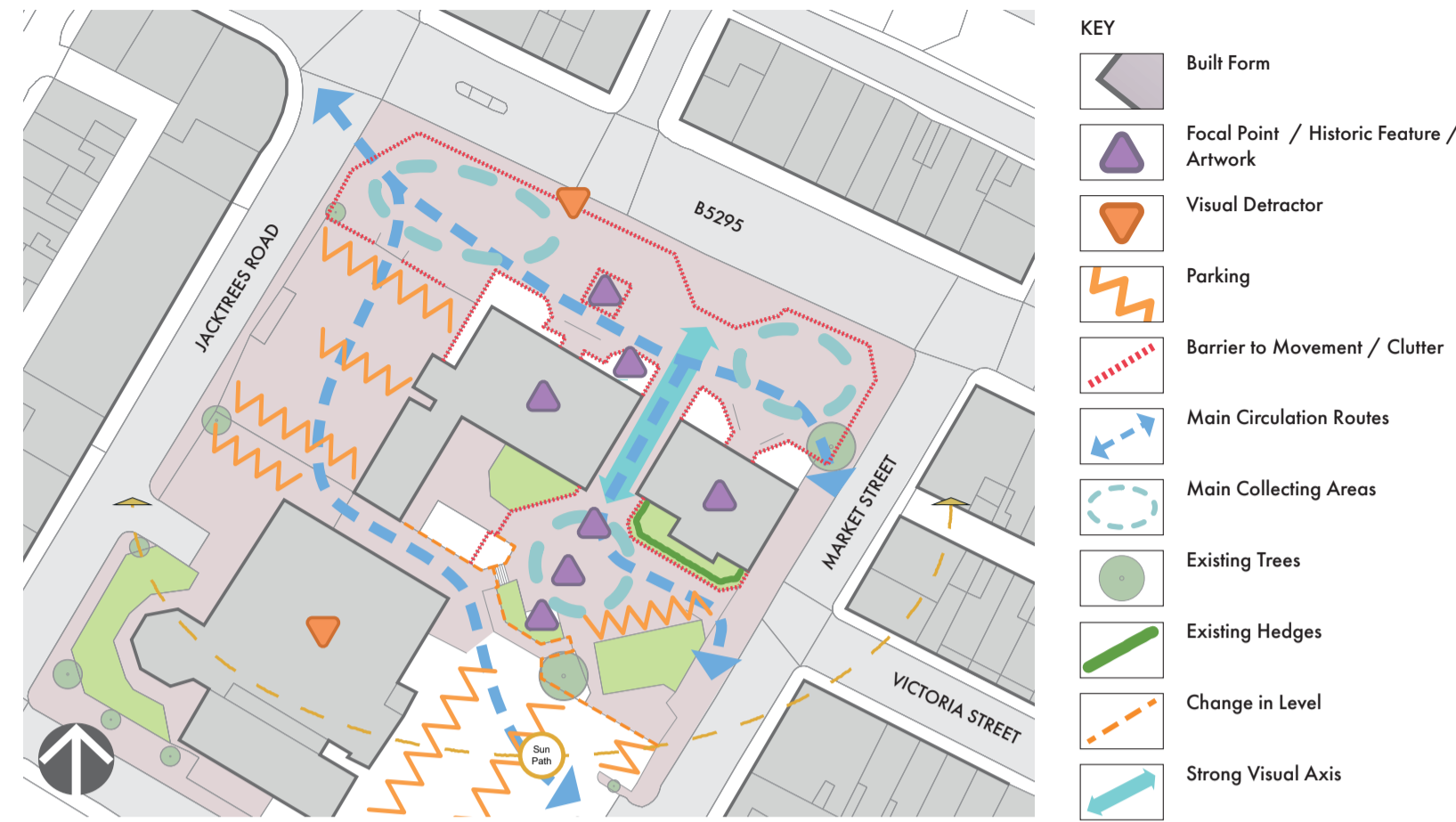


CLEATOR MOOR PUBLIC REALM - TELL US WHAT YOU THINK

The proposals for Cleator Moor look to open up the space to the front of the library and council offices by removing the railings around the square and the railings and low level walls around the buildings. A new softer edge of tree planting and rain gardens, to assist in the management of surface water runoff, would be introduced.

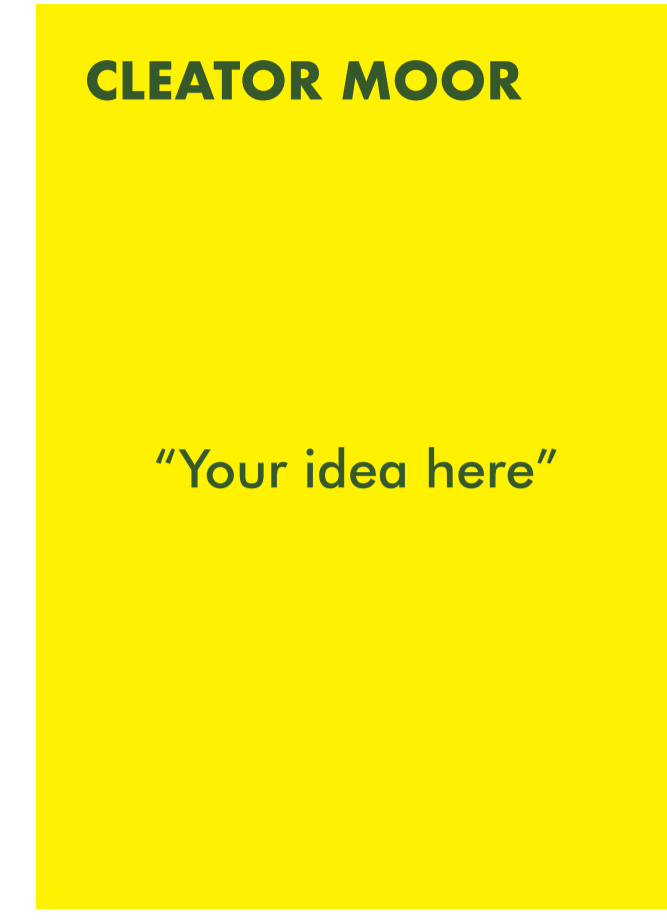
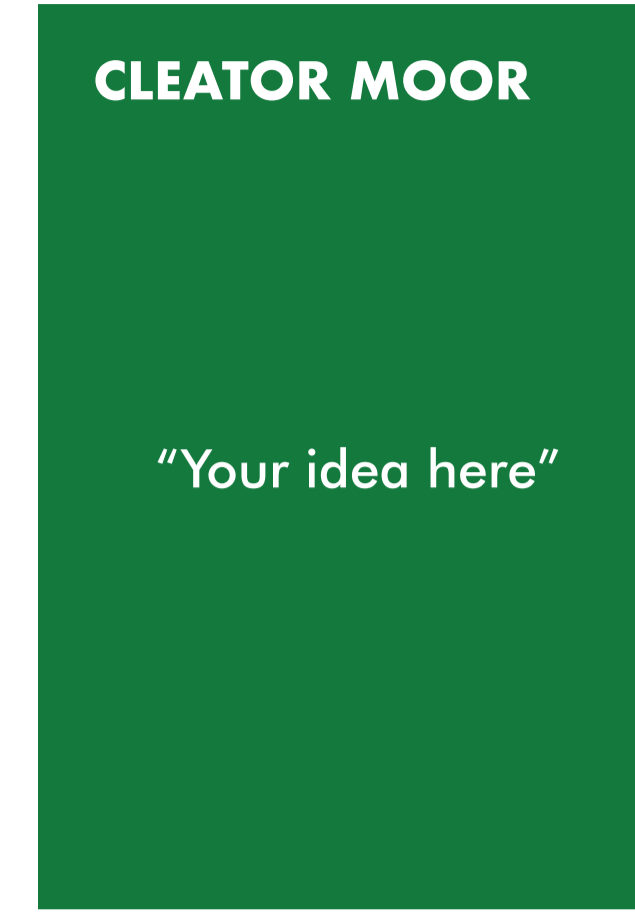
Option 1 shows the memorial fountain in its current position, but with the railings and walls removed. This creates three defined areas for public use, a quiet sitting area to the west, a collecting area around the fountain and a multi-use space to the east with room for outdoor market stalls and other events.

Option 2 shows the fountain moved to the north east of the space to create a large multi-use space for events, markets and other gatherings. The new setting for the fountain can double as a quiet seating area. To the rear of the library and council offices a new seating area has also been shown. Further new seating and street furniture would be introduced throughout the site and the existing Conrad Atkinson sculptures would be retained. Banners reflecting the historic and future aspirations of Cleator Moor could be introduced around the Town Square.



Analysis Plan

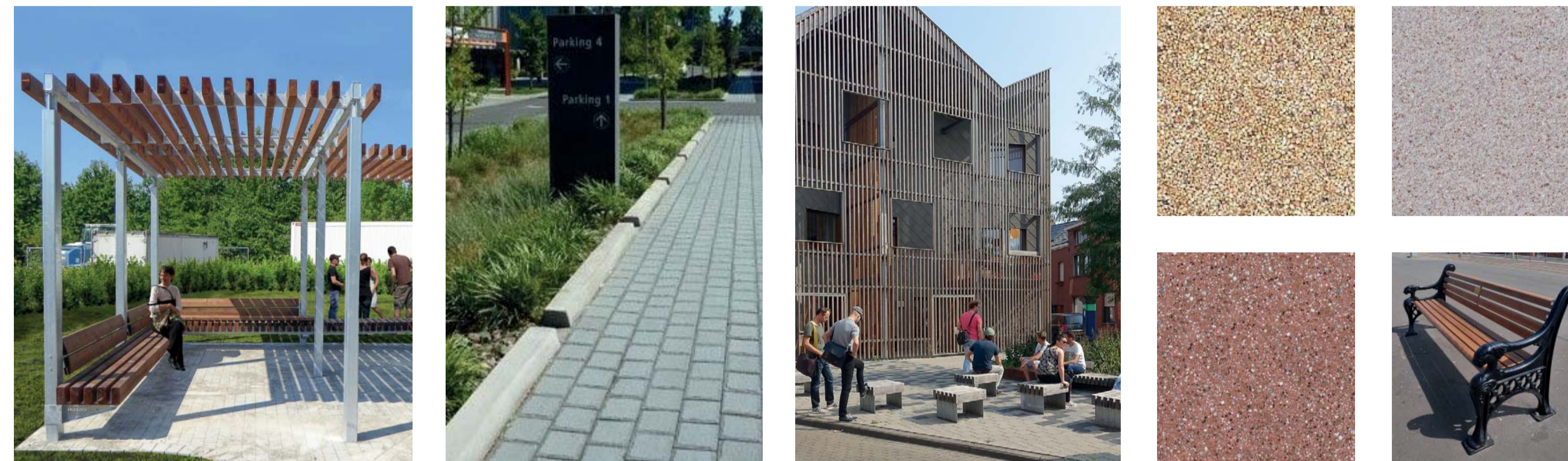
Enclosed **Cluttered** Market
Disrepair Pedestrian Flow
 Nice Views **Barrier** Signage
Shelter Robust **Linkages**
 Car Dominated **Sustainable**
Trees Maintenance **Parking**
Planting **Bus Stop** Lighting
Seating Soften **History** Heritage
 Space for Young People **Fountain** Position
Mismatched Street Furniture **Drainage**
Contemporary Open and Active Building Frontages
Signage **Bike Rack** **Weeds** **Tour de Moor**
Social Space **Remove Walls**



Banner Ideas - What should we celebrate about Cleator Moor?



Potential Materials and Features



Banners Visual of Town Square



Sketch Proposal Option 1



Sketch Proposal Option 2