

PLANNING SUMMER SCHOOL – 2012

Lead Officer: Tony Pomfret – Development Control Manager

To confirm attendance by two elected Members at this year's Planning Summer School to be held 14 – 17 September 2012 at Liverpool Hope University

Recommendation: That two Members be nominated to attend this year's Summer School.

Resource Implications: Funding from existing budget for Member conferences.

1.0 SUPPORTING INFORMATION

- 1.1 Under the auspices of the Royal Town Planning Institute the Planning Summer School represents the national town planning conference for both elected Members and Officers.
- 1.2 For many years the Council has been represented at the Elected Members' School by two delegates. Nominations are now sought for attendance at this year's school to be held at Liverpool Hope University which will combine the Members' and Officers' schools into a single event. Programme details are appended
- 1.3 In time honoured tradition, the delegates will subsequently be invited to present a report to the Panel.

Contact Officer: Tony Pomfret – Development Control Manager

Appendix: Summer School Programme

Friday 14th September

- 12:00 Registration up to 19:00
 13:45-14:45 Optional Briefing Sessions
 1 Merseyside Renaissance
Sue Kidd, Liverpool University or
 2 Neighbourhood Planning in Practice
 President's Introduction **Leonora Rozee**
 Opening Address **Lord Heseltine tbc**
 Tea
 Back to the Future - Are New Towns and
 Garden Villages the Way Forward?
Clive Rand, Barton Willmore
 Dinner
 Evening Events:
 1 Question Time (for Elected Members) or
 2 Planners' Soapbox (for Planners)
 Wine Reception (sponsored by JBP)



Accommodation
 Residential places include
 3 nights accommodation
 from 14th September

Planning Summit
 available as a day ticket!

Saturday 15th September

- 09:15-10:30 UK Strategic Planning - Same Issues,
 Different Approach?
 Chief Planner Scotland,
Rosemary Thomas, Welsh Assembly
 Government, **Steve Quartermain**, CLG
 10:30-11:00 Coffee and Networking
 11:00-12:30 Choice of Workshops:
 1 Localism and Professional Ethics
Geoff Vigar, Newcastle University
 2 Working From the Bottom Up - Localism
 in Action
Neil McInroy, Centre for Local Economic
 Strategies
 3 All in it Together or Paddling Our Own
 Canoes - Are We Co-operating?
Dave Caulfield, Sheffield City Council
Sylvia Yates, Sheffield LEP
 4 Sustainable Travel - Is it a Myth?
Lynda Addison, Lynda Addison Associates
 & **Abby Hone**, Brighton & Hove City
 Council
 12:30-14:00 Networking Lunch
 13:15-13:45 HS2 - a Tale of Battles, Banners and
 Blisters
Tim Stanfeld, Planning & Economic
 Development Consultant, Planning
 Magazine Contributor & Blogger
 14:00 The Big Debate - Reconstructing England
 - What Will it Take?
Peter Hetherington, The Guardian
Emma Cariaga, Land Securities,
Henry Cleary formerly CLG and
Ian Wray formerly NWRDA
 Partnered with TCPA
 16:00-16:30 Coffee and Networking
 16:30-18:45 Dale Farm One Year On - What Have We
 Learnt? **Alison Heine**, Consultant and **Dawn
 Taylor**, G&T Co-ordinator Cheshire West &
 Chester
 18:45 Wine Reception (sponsored by David Lock
 Associates)
 David Lock Associates
 Town Planning and Urban Design
 19:30 Gala Dinner with After Dinner Speaker
Ian Dove QC and Entertainment

Sunday 16th September

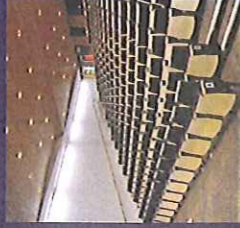
- 09:15-10:30 Infrastructure & Affordable Housing - Will the
 Money Be There?
Adam Broadway, Instinctively Green
Helen Howie, Shropshire District Council
 10:30-11:00 Coffee and Networking
 11:00-12:15 Choice of Workshops:
 1 Housing Led Regeneration - a Practical
 Study **Jackie Mason**, Meshworks and
Mick Wellock, Kirkwells
 2 Development Viability in a (Near) Recession
Tom Warburton, HCA NW
 3 Can Renewable Energy Make a Real
 Difference?
 4 Traveling Scholarship & RTPJ Young
 Planner Presentations
 Networking Lunch
 Study Tours:
 - Renaissance of Liverpool City Centre
 - Conservation in Chester
 - Sefton Anthony Gormley Public Art
 - Wirral Waters Regeneration
 - Eldonian Village Housing Market Renewal
 Dinner
 18:30-19:30 International Guest Presentations
 19:45 Followed by the Liverpool Challenge Quiz

Monday 17th September

- 09:30 - 11:00 Choice of Workshops:
 1 The Olympic Legacy - How Did We Do It?
Vivienne Ramsey, Olympic Delivery Authority
 2 Delivering a Greener, Healthier Future
Paul Nolan, The Mersey Forest
 3 Heritage & Sustainable Communities - A
 Case Study
Jessica Thomas, Leeds City Council
 4 Localism & Pre-Determination (for Elected
 Members)
Duncan Field, S J Berwin
 11:00-11:30 Coffee and Networking
 11:30 Legal Update - Localism & Spatial Planning
Martin Kingston QC, No 5 Chambers
 12:30 Closing Address
Colin Haylock, President, Royal Town Planning
 Institute
 13:30 Close of School and Lunch

Delegate information

For 2012 the Planning Summer School travels to the city of Liverpool based in a new venue at Hope University. The modern, high quality accommodation, dining and teaching spaces are set within a beautiful landscaped campus that is compact, convenient and accessible. Onsite facilities include a café, shop and fully licensed bar which will be available to our delegates throughout the duration of the Summer School.



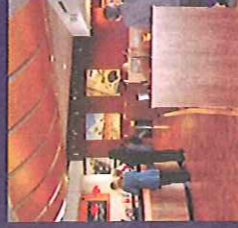
Accommodation

Delegate accommodation is conveniently located adjoining the main dining and conference areas. The en-suite accommodation has a single bed, tea and coffee making facilities and is serviced daily to include the provision of towels. Accessible accommodation is also available so please let us know if you have any particular requirements when booking.



Travel

The main **Hope Park Campus**, which is where the Summer School is being held, is located to the east of Liverpool city centre in Childwall. It is close to Queens Drive (A5058), and the end of the M62 and ample car parking is available adjoining the accommodation. The Hope Park Campus is a 10-15 minute taxi ride from Liverpool Lime Street Station. Liverpool John Lennon Airport is about four miles from Hope Park and Manchester Airport is under an hour away by road or rail. Further travel details are available at www.planningsummerschool.org



Special Fund

Summer School is able to offer assistance to planners who may have difficulty attending due to particular circumstances including disability, family commitments,

and unemployment for example. Assistance may also be available if funding is not available from your current employer and you have not attended Summer School before. Applications for the Special Fund must be received by the 30th June 2012, together with a 500 word statement and the names of two referees. Application details are available at:

www.planningsummerschool.org

Summer School and Your CPD

Keeping motivated and meeting your CPD requirements can be difficult when training budgets are tight and work pressures are increased. The Planning Summer School offers an excellent opportunity to meet your CPD requirements for a single fee, one set of travel expenses, and a short period away from the office. The 'Weekender' will enable you to meet like-minded people, listen, contribute, learn, relax and enjoy the social side of things in a change of scenery before returning to the day job re-energised and re-focused. No other event offers quite the same experience – it's what makes the Planning Summer School unique.

2012 Prices Offer Exceptional Value for Money

Take advantage of our Early Bird, Multi-Buy Discount or Day Ticket prices, including the 'Planning Summit'. Residential places include three nights full board accommodation, as specified in the programme, including the Gala Dinner. Book online at www.planningsummerschool.org

Early Bird Residential (payment by 30 June)	£760 + VAT
Multi-Buy Ticket (3 delegate places at the School - each additional place £700 + VAT)	£2,100 + VAT
Standard Residential	£820 + VAT
Non-Residential	£629 + VAT
Student/Unemployed	£439 + VAT
Planning Summit	£225 + VAT
Day Ticket	£225 + VAT
Student Day Ticket	£150 + VAT

Book online at our new website: www.planningsummerschool.org