

**STREET NAMING AND NUMBERING:  
NEW BUILD REGENERATION PROJECT ON LAND AT GRAMMERSCROFT,  
MILLOM**

**Lead Officer:** Tim Capper – Democratic Services Manager

To ask members to decide on a street name for part of the new build regeneration project on land at Grammerscroft, Millom.

**Recommendation:** That the street name **Croft Close** be adopted for the cul-de-sac to the NW of the housing development and all the relevant bodies be notified.

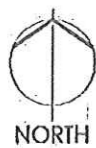
**Resources Implications:** Cost of providing street nameplates if the request is approved.

**1.0 SUPPORTING INFORMATION**

- 1.1. The site is part of the new build regeneration project on land at Grammerscroft, Millom
- 1.2. To alleviate the need to incorporate 'A' numbers within the development, the developer has asked to adopt a name for the Cul-de-Sac to the NW of the regeneration project.
- 1.3. The developer, after consultation with the existing residents of Grammerscroft, has suggested Croft Close for consideration.
- 1.4. The development is accessed via Grammerscroft, Millom

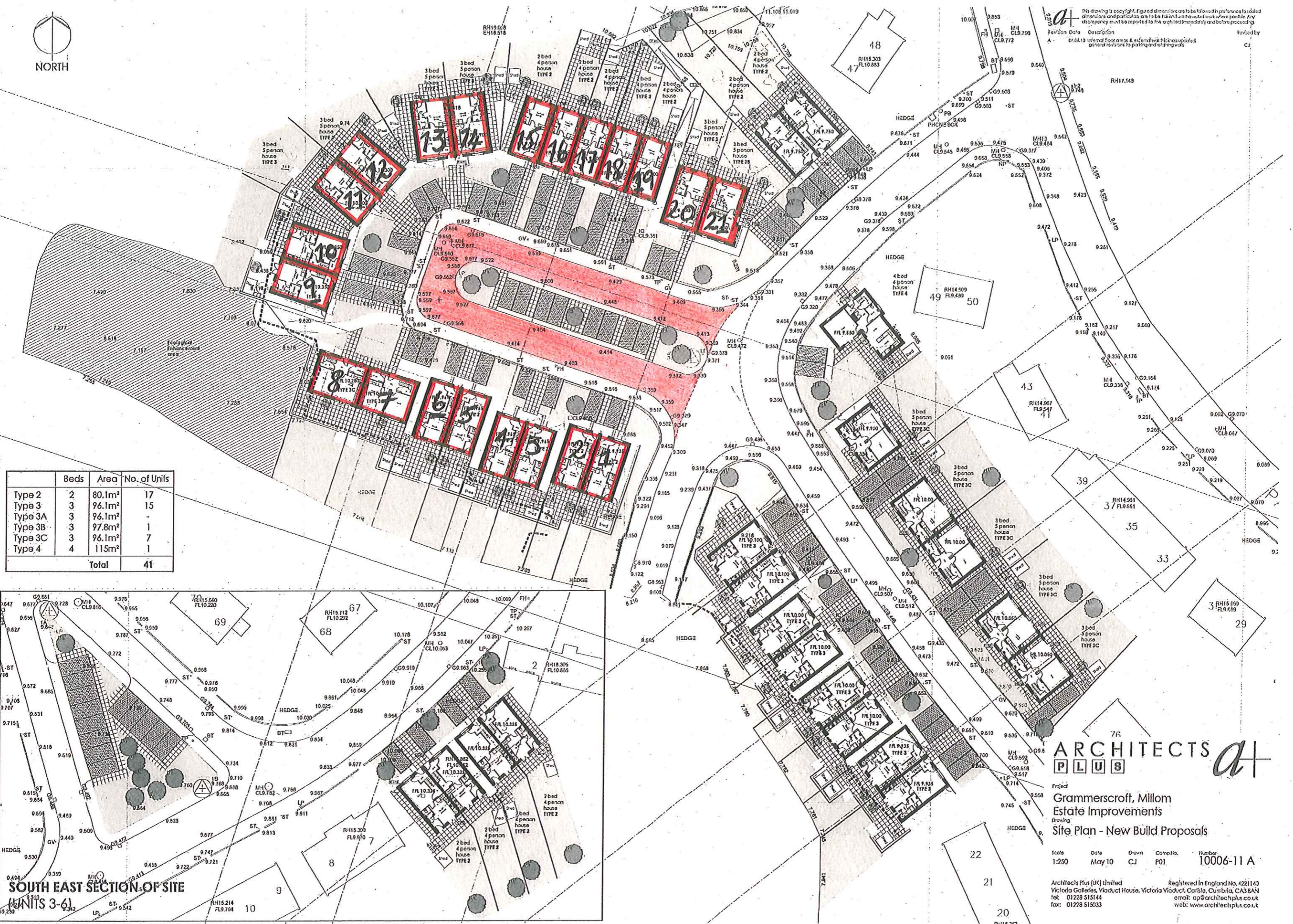
**CONTACT OFFICER:** J Fletcher, SN&N Officer

**BACKGROUND PAPERS:** Street Naming file B/10

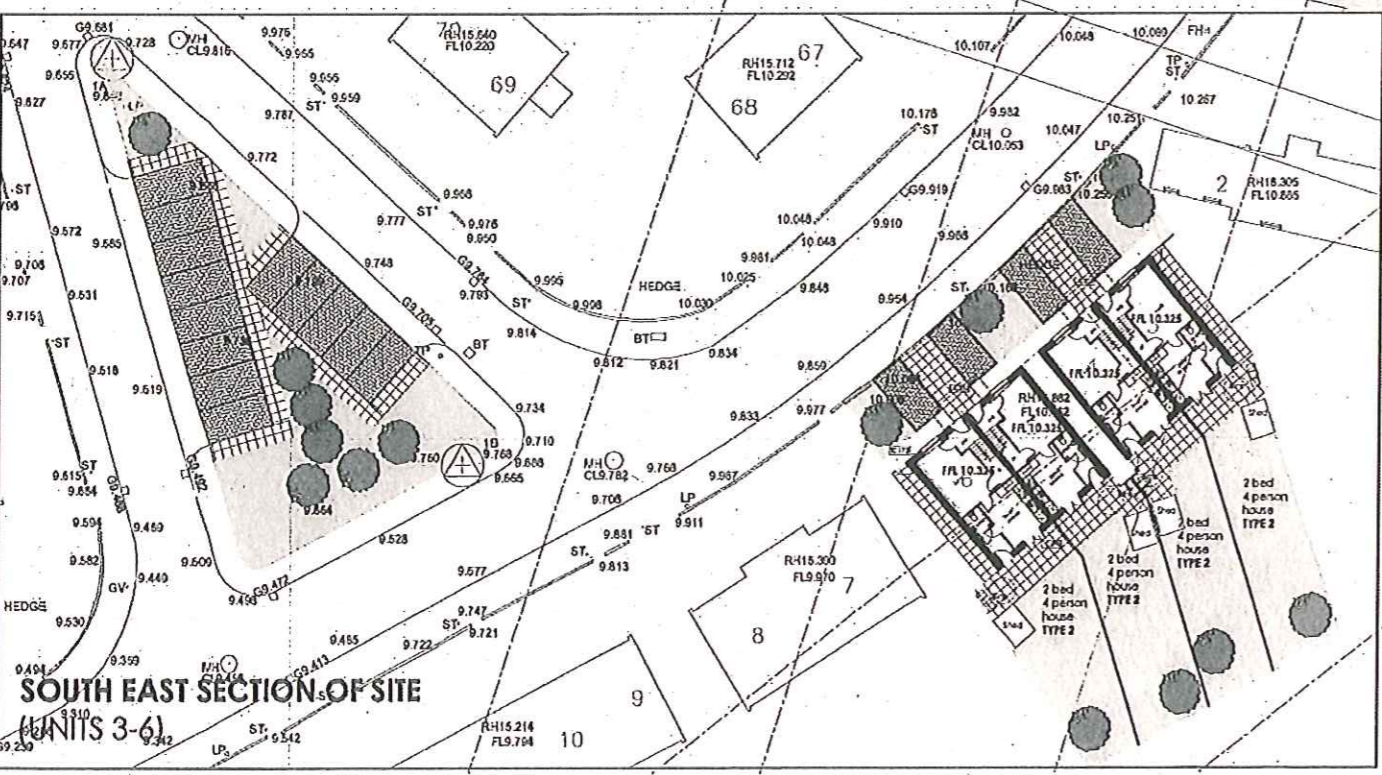


This drawing is copyright. Figured dimensions are to be followed in preference to related dimensions and particulars are to be taken from the actual work where possible. Any discrepancy must be reported to the architect immediately and before proceeding.

Revision Data  
 A 02.01.10 Internal Floor areas & external wall thickness updated personal reference to parking and retaining walls  
 Revised by CJ



	Beds	Area	No. of Units
Type 2	2	80.1m <sup>2</sup>	17
Type 3	3	96.1m <sup>2</sup>	15
Type 3A	3	96.1m <sup>2</sup>	-
Type 3B	3	97.8m <sup>2</sup>	1
Type 3C	3	96.1m <sup>2</sup>	7
Type 4	4	115m <sup>2</sup>	1
<b>Total</b>			<b>41</b>



**ARCHITECTS PLUS** *a*

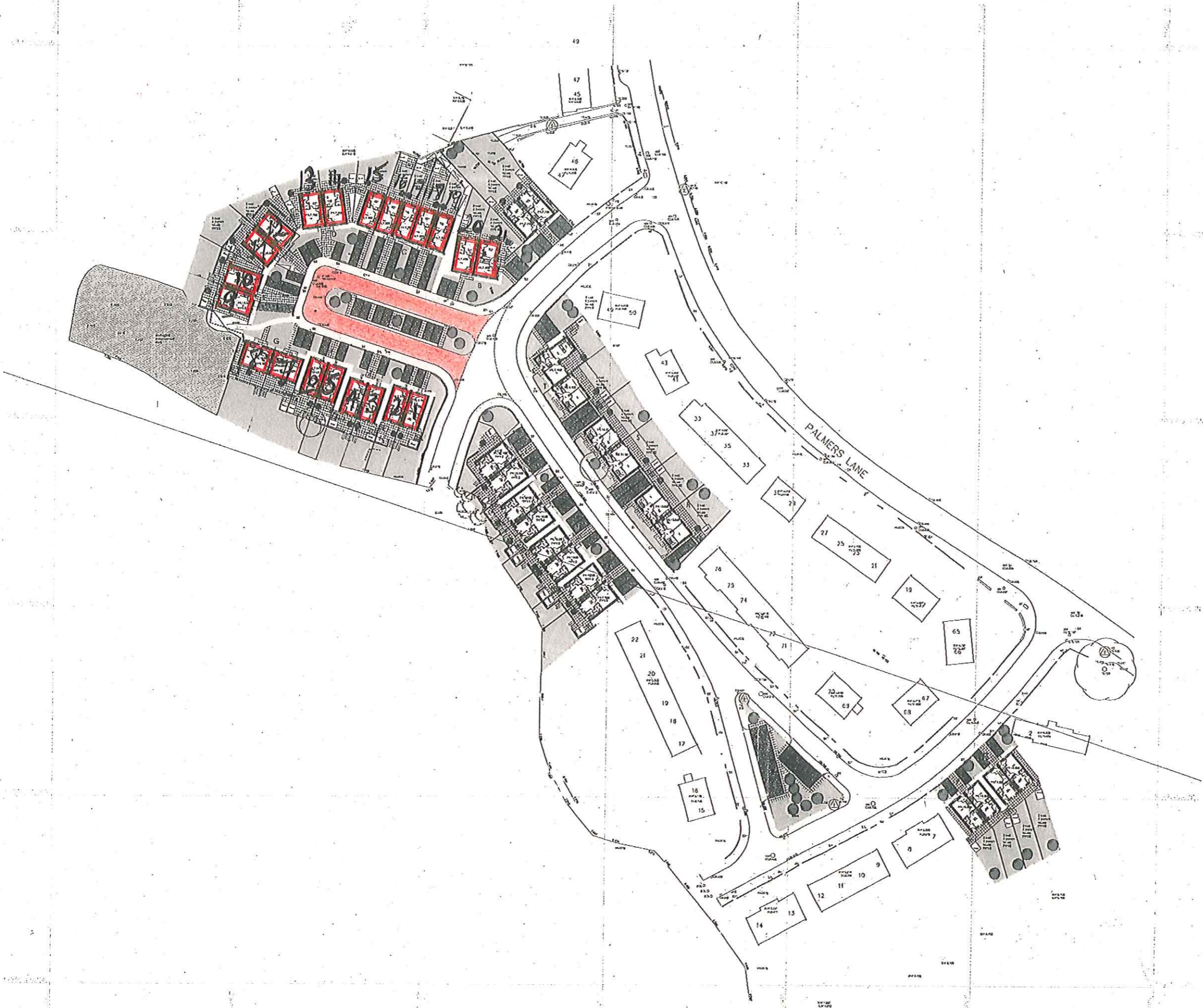
Project  
 Grammerscroft, Millom  
 Estate Improvements  
 Drawing  
 Site Plan - New Build Proposals

Scale 1:250 Date May 10 Drawn CJ Comp. No. P01 Number 10006-11 A

Architects Plus (UK) Limited Registered in England No. 4221143  
 Victoria Galleries, Viaduct House, Victoria Viaduct, Carlisle, Cumbria, CA3 8AN  
 tel: 01228 515144 email: ap@architectplus.co.uk  
 fax: 01228 515033 web: www.architectplus.co.uk

This drawing is copyright. Figured dimensions are to be taken from the printed drawings unless otherwise stated. Any discrepancy must be reported to the architect immediately and before proceeding.

Revision	Date	Description	Revised by
A	07.04.10	Internal floor areas & external work to be updated general revisions to parking and riding walls	CJ
B	14.04.10	4 bed unit and adjacent Type 3C linked as per sketch car parking revised to fit with new car access and space provided general revisions to levels to ensure inclusive access to all necessary areas	CJ
C	22.04.10	Proposed levels, ramp and step positions marked in black letters added	CJ



	Beds	Area	No. of Units
Type 2	2	80.1m <sup>2</sup>	17
Type 3	3	96.1m <sup>2</sup>	15
Type 3B	3	97.8m <sup>2</sup>	1
Type 3C	3	96.1m <sup>2</sup>	7
Type 4	4	115m <sup>2</sup>	1
<b>Total</b>			<b>41</b>



**PRELIMINARY**  
**ARCHITECTS**  
**PLUS** *a+*

Project  
 Grammerscroft, Millom  
 Estate Improvements  
 Drawing  
 Site Plan - New Build Proposals

Scale 1:500    Date Nov 09    Drawn CJ    Checked P02    Number 10006-10C

Architects Plus (UK) Limited    Registered in England No. 4221140  
 Victoria Golfers, Viaduct House, Victoria Viaduct, Carlisle, Cumbria, CA3 8AN  
 tel: 01228 515144    email: ap@architectsplus.co.uk  
 fax: 01228 515033    web: www.architectsplus.co.uk