

STREET NAMING AND NUMBERING

NEW DEVELOPMENT – 8 Commercial Units to the ground floor of Pears House, Duke Street, Whitehaven

Lead Officer: Martin Jepson – Head of Legal and Democratic Services

To ask members to decide on the street name for the eight Retail Units to the ground floor of the Pears House Development Site.

Recommendation: That the street name **Millennium Promenade** be officially adopted for the development and all the relevant bodies be notified.

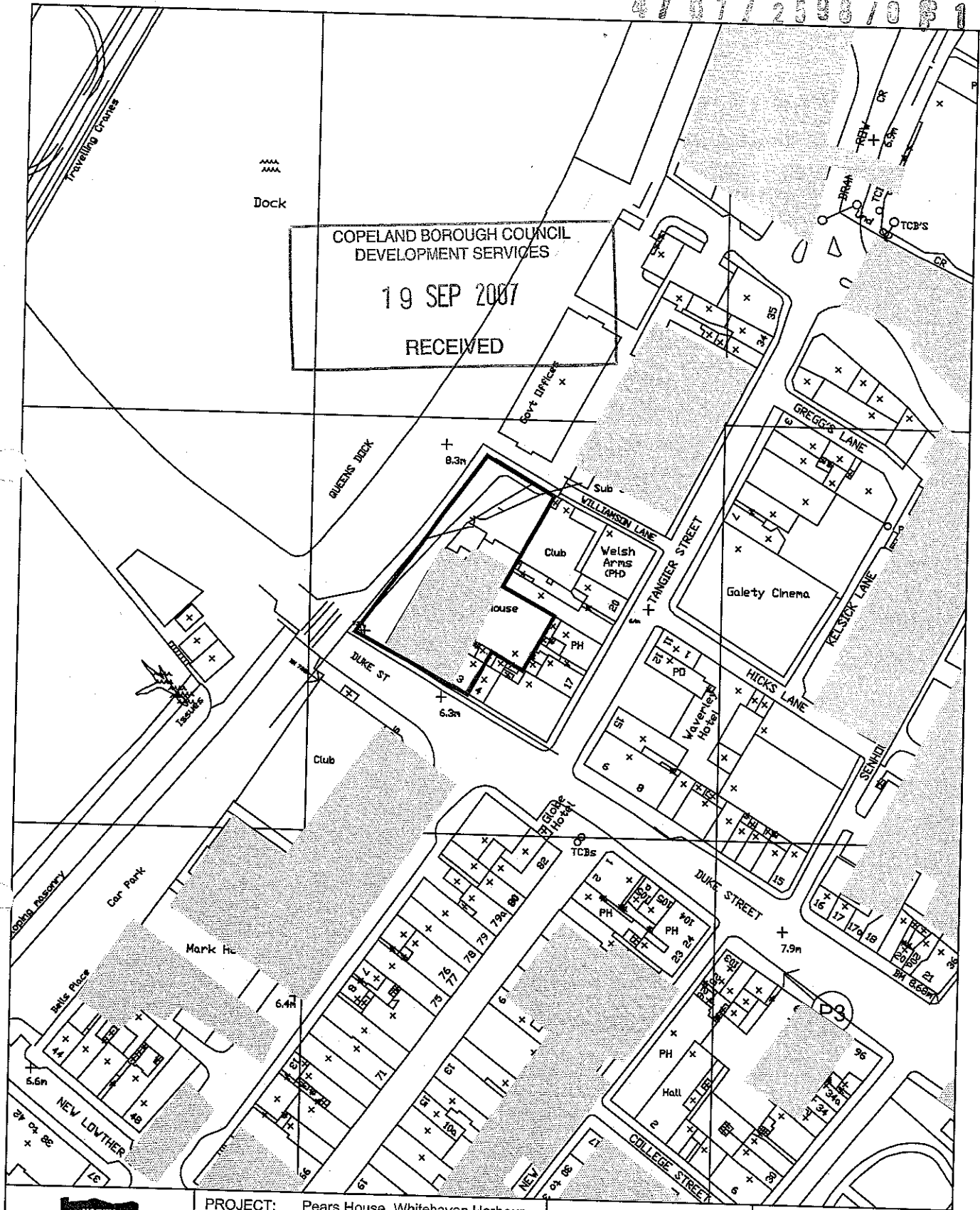
Resources Implications: Cost of providing street nameplates if the request is approved.

1.0 SUPPORTING INFORMATION

- 1.1 The Whitehaven Harbour commissioners have been consulted and have confirmed that the correct name is Millennium Promenade.
- 1.2 The 8 Retail units will be accessed directly off this street, the residential units on the upper floors will be accessed from Duke Street.
- 1.3 The Residential units to the upper floors have already been formally registered as numbers 1-33 Pears House, Duke Street, Whitehaven.
- 1.4 The developer had suggested Millennium Promenade or Millennium Way for consideration.

CONTACT OFFICER: Stephanie Shaw – Street Naming and Numbering Officer

BACKGROUND PAPERS: Street Naming file B/10



COPELAND BOROUGH COUNCIL
DEVELOPMENT SERVICES
19 SEP 2007
RECEIVED

NORTH PENNINES
ARCHAEOLOGY LIMITED
North Pennines Archaeology Ltd
2007

PROJECT: Pears House, Whitehaven Harbour
SCALE: 1:1250
REPORT No: CP 563/07
CLIENT: Magnus Homes
DRAWN BY: CP
DATE: August 2007
FIGURE No: 14

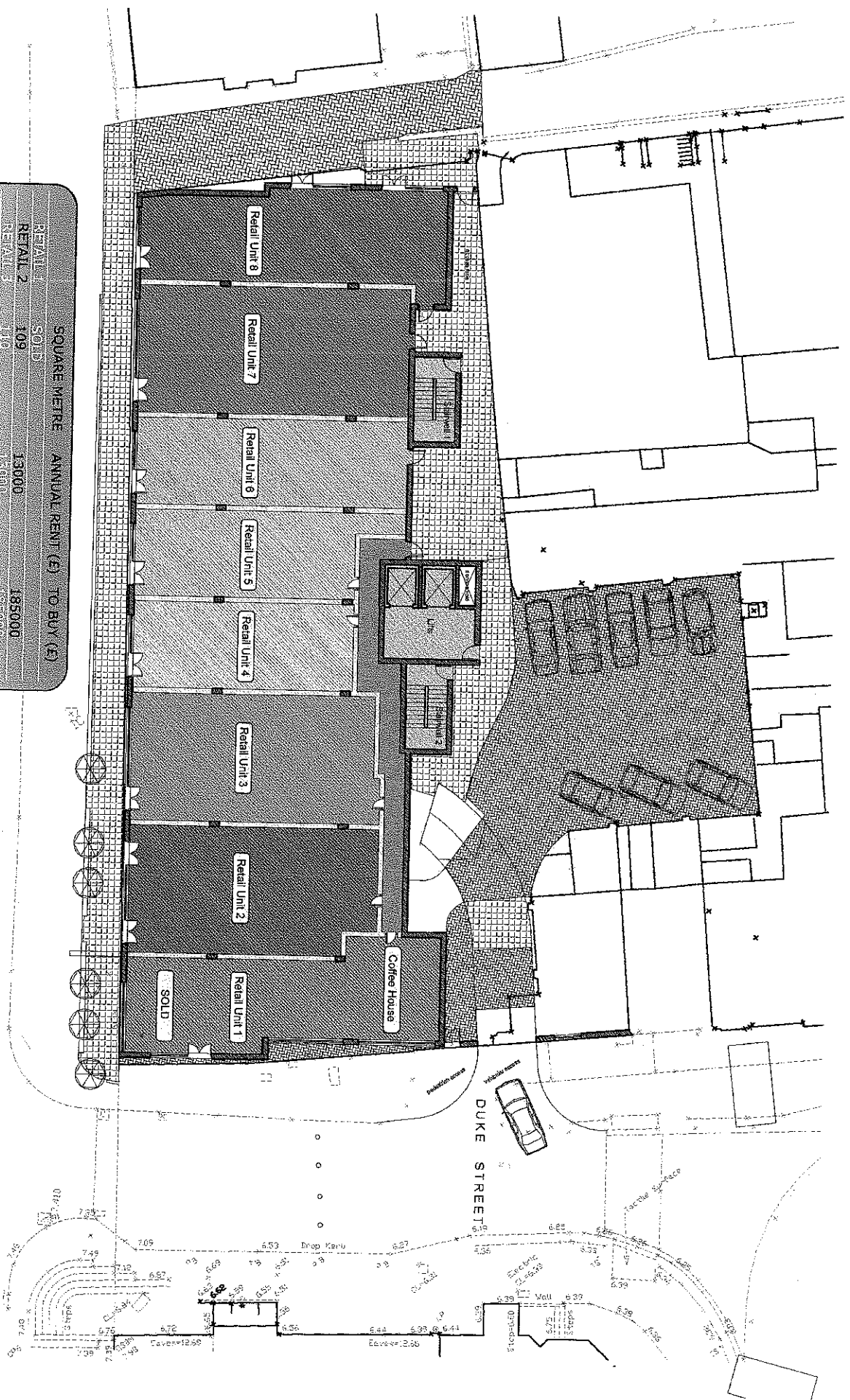
LOCATION:

KEY:

- Site Boundary
- Demolition Area

Reproduced by permission of Ordnance Survey on behalf of The Controller of Her Majesty's Stationery Office. © Crown copyright. All rights reserved. Licence number 100014732

Figure 14 : Areas Scheduled for Demolition by 1979-87 Survey (after Collier 1991)



RETAIL	SOLD	SQUARE METRE	ANNUAL RENT (£)	TO BUY (£)
RETAIL 2	109	13000	13000	185000
RETAIL 3	110	13000	13000	185000
RETAIL 4	70	8500	8500	120000
RETAIL 5	81	9500	9500	135000
RETAIL 6	91	11000	11000	154000
RETAIL 7	130	15500	15500	220000
RETAIL 8	98	12000	12000	165000

Ground Floor