





ENDECOM'S PROPOSAL FOR KEEKLE HEAD

- Create the Keekle Head Waste Management Centre
- Modern, purpose-built disposal facility
- Designed, constructed and operated to highest technical standard
- International and industry best practice

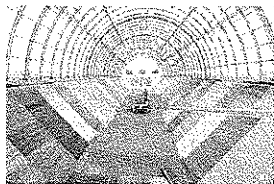


ENDECOM



ENDECOM'S PROPOSAL FOR KEEKLE HEAD

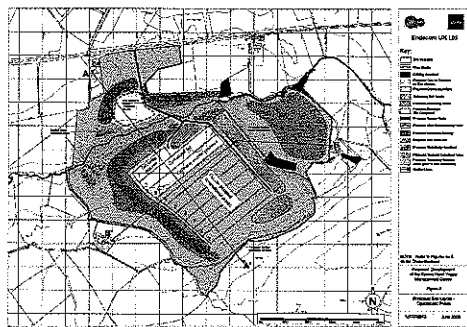
- Major investment in upfront restoration scheme
- Re-engineering of site
- Waste transported in sealed bags or drums
- Undercover disposal into engineered voids



ENDECOM



PROPOSED DEVELOPMENT



ENDECOM



TIMETABLE

- Preliminary investigations over last 18 months
- Exploratory drilling currently taking place
- Pre-planning public engagement in Autumn 2009
- Planning application submitted by end of 2009
- Radioactive Substances Act and NII authorisations – 2010
- Anticipated start on site – advance landscaping and construction work
- Landfill activities over 50 years
- Final phase of restoration on completion

ENDECOM



PUBLIC ENGAGEMENT

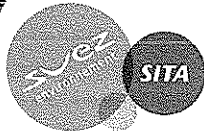
- Current 'Stakeholder' discussions
- One to one meetings with stakeholder, if requested
- Ongoing media relations
- Public exhibitions – 12, 13 and 15 October 2009 at various local venues
- Newspaper advertising, leaflets and posters
- Responses to individual enquiries

ENDECOM



Rob Scott,
Managing Consultant,
Nuvia Ltd

ENDECOM



WHAT IS LLW / VLLW?

- **Low Level Waste (LLW)** is termed as solid radioactive waste that contains up to 4,000 Bq/g alpha bearing nuclides and 12,000 Bq/g beta/gamma bearing nuclides.
- **Very Low Level Waste (VLLW)** is a sub-category of LLW that comprises:

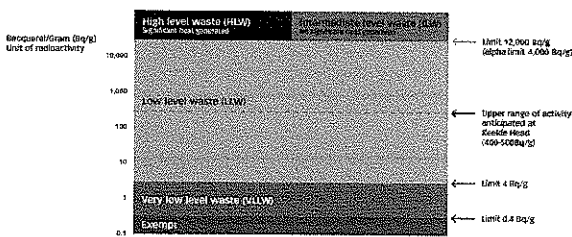
1. **Low Volume VLLW** ("dustbin loads") - is generated principally by so called "small users" and are wastes that can be safely disposed of to an unspecified destination with municipal, commercial or industrial waste, each 0.1 cubic metre of material containing less than 400,000Bq of total activity, or single items containing less than 40,000Bq of total activity.

2. **High Volume VLLW** (bulk disposals) - Most of this waste is produced by decommissioning nuclear licensed sites and are typically soils & rubble wastes with maximum concentrations of 4Bq/g of total activity that can be disposed of to specified landfill sites.

ENDECOM



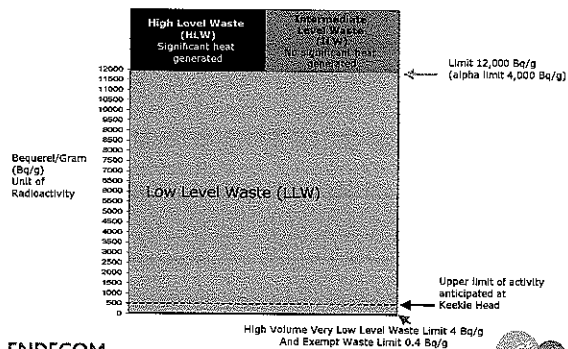
RADIOLOGICAL CLASSIFICATIONS



ENDECOM



RADIOLOGICAL CLASSIFICATIONS



ENDECOM



SAFETY AND REASSURANCE

- Risk analysis of the Keele Head operations is being carried out. This looks at radiological exposure routes and pathways to receptors (people) during operational and closure phases.
- Evaluation of risks posed by disposals at Keele Head requires is ongoing and includes site investigations, site design, operations, waste acceptance and hydrogeological modelling.

ENDECOM



Thank you for attending and contributing to this presentation

www.sita.co.uk

ENDECOM

