

## COMMUNITY GOVERNANCE REVIEW – PONSONBY PARISH

**PORTFOLIO** Cllr John Bowman  
**HOLDER:**  
**LEAD OFFICER:** Tim Capper, Democratic Services Manager  
**REPORT AUTHORS:** Stephanie Shaw

<b>Summary</b>	Report to the Electoral Review Working Party the proposals put forward by Ponsonby Parish Council requesting a change to the boundaries following last year's Community Governance review.
<b>Recommendation:</b>	The party should consider whether a new Community Governance Review should be carried out following the completion of the review in 2010.

### 1 INTRODUCTION

- 1.1 The Local Government and Public Involvement in Health Act 2007 introduced powers for a principal council to undertake community governance reviews of all or part of their area, and to make local reorganisation orders on completion of reviews. Community governance reviews (CGR's) can comprise creating, merging or abolishing parishes, naming or re-naming parishes, amending parish boundaries, and altering electoral arrangements in parishes. Electoral arrangements include the number councillors to be elected to a parish council, their terms of office, and warding arrangements within parishes. Powers to undertake CGR's replace the powers under earlier legislation for the Secretary of State to make parish review orders on the recommendations of principal councils.

### 2 PROPOSALS

- 2.1 A request has been received from Ponsonby Parish Council for a community governance review to be carried out in order to alter the boundary between Beckermat and Ponsonby Parish.
- 2.2 A Community Governance review was previously carried out in this area during 2010, the changes of which came into force on 1<sup>st</sup> April 2011.
- 2.3 A map showing the existing boundary of Ponsonby parish and the proposed changes is shown at appendix 1. The proposals affect a total of six properties and twelve electors.

2.4 Representations were received during the initial consultation period to change the boundary so that properties to the west side of the A595 were included in Ponsonby Parish instead of Beckermest parish as originally proposed.

2.5 The representations received were accepted and the boundary was changed. However it appears that the new boundary did not include all the intended properties and a small area of land was missed. The 6 properties involved are still part of Beckermest Parish.

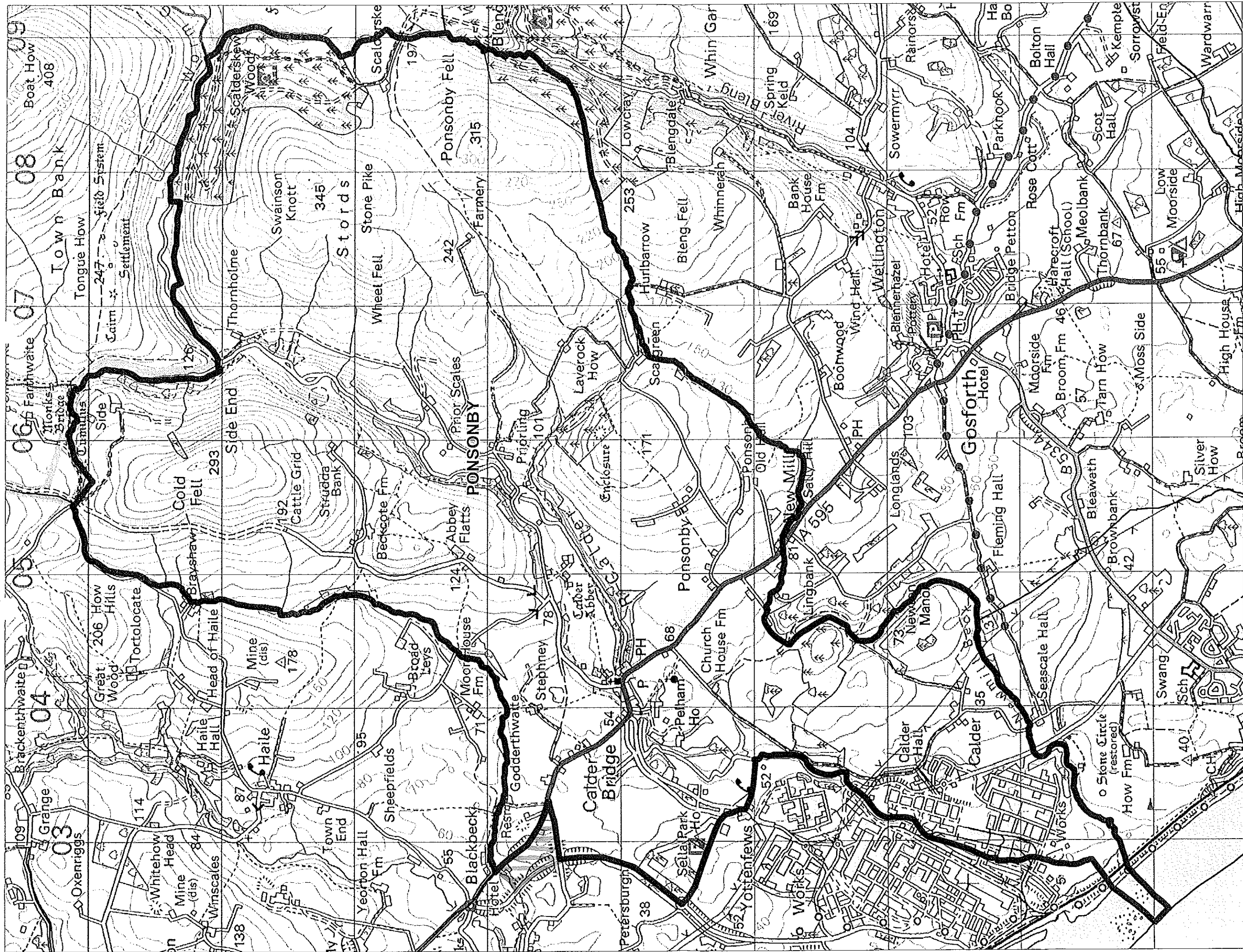
### **3 CONCLUSION**

3.1 The Working Party is asked to:

- (i) Consider whether a community governance review should be commenced to alter the existing boundary between Beckermest and Ponsonby Parishes.

List of Background Documents      Guidance on CGR's

List of Consultees:                      Chief Executive; S 151 Officer; Portfolio Holder



Copeland Borough Council  
The Copeland Centre  
Catherine Street  
Whitehaven  
Cumbria CA28 7SJ

