

PLANNING SUMMER SCHOOL – SWANSEA 2007

Lead Officer: Tony Pomfret – Development Services Manager

To confirm attendance by two elected Members at this year's Planning Summer School to be held 31 August – 4 September 2007 in Swansea

Recommendation: That two Members be nominated to attend this year's Summer School.

Resource Implications: Within existing budget for Member conferences.

1.0 SUPPORTING INFORMATION

- 1.1 Under the auspices of the Royal Town Planning Institute the Planning Summer School represents the national town planning conference for both elected Members and Officers.
- 1.2 For many years the Council has been represented at the Elected Members School by two delegates and nominations are now sought for attendance at this year's school to be held at Swansea University.
- 1.3 A copy of the programme together with study tour details is attached. Most of the issues are very topical in the context of Copeland.
- 1.4 In time honoured tradition, the delegates will subsequently present a report to the Panel.

Contact Officer: Tony Pomfret – Development Services Manager

Appendix: Elected Members Summer School details

Elected Members' School

31 August - 4 September 2007

Friday 31 August

- 12:00 Registration
- 14:30 Briefing Sessions
- 16:00
- 17:00
- 20:00 Opening Address
- 21:00 Wine Reception
- Introduction to Planning**
Steve Quartermain, Planning Officers Society & Hambleton District Council
- Introduction to Swansea**
Bryan Graham, City & County of Swansea
- Introduction to First Time Attendees at Planning Summer School**
- Hosted by the Politicians in Planning Association**

Saturday 1 September

- 09:30 Main Papers:
- 11:30 Discussion Group:
- Or Choice of Workshops:**
- Planning Law**
Russell Harris QC
- Business - Compensating Developers for the Uncertainty in the System**
Trevor Osborne, Trevor Osborne Property Group
- Discussion on Planning Law Paper**
Led by Russell Harris QC
- Enforcement**
Vivien Green, Trevor Roberts Associates
- Community Engagement**
Jas Atwal, Jas Atwal Associates
- Renewable Energy - "The Merton Rule"**
Steve Cardis, Merton Borough Council
- How Do You Solve a Problem Like a planning appeal?**
Stephanie Chivers, The Planning Inspectorate
- Discussion on Business - Compensating Developers for the Uncertainty in the System Paper**
Led by Trevor Osborne, Trevor Osborne Property Group

Or Choice of Workshops (repeated)

16:00 Main Paper

Design Issues
Prof John Punter, Design Commission for Wales & Cardiff University

20:00 Choice of Evening Papers:

Sunday 2 September

- 09:30 Main Papers Include:
- 13:45 Choice of Study Tours
- 20:00 Evening Paper
- The Need for Housing**
Chris Holmes CBE, Researcher/Writer & Board of Housing Corporation
- Effective Practice in Spatial Planning Project**
Prof Janice Morphet & Dr Nick Gallent, University College London
- Swansea City & Maritime Quarter**
Gower AONB
Brecon Beacons
Neath Canal
- The Planners Did Their Best: The Planning Films of John Bejerman**
Prof Mark Tewdwr Jones, Bartlett School of Planning

Monday 3 September

- 09:30 Main Papers
- 11:30 Choice of Workshops including:
- 14:15 Choice of Workshops (repeated)
- 16:00 Closing Address
- 20:00 Civic Reception
- Central/Local Government Tensions - Working Together?**
Speakers include:
Cllr Paul Bettison, Bracknell Forest Borough Council
- Culture Change and Update**
Richard Goodwin, Communities & Local Government
- Communities & Regeneration**
Speaker to be confirmed
- Community Engagement & Handling the Media**
Richard Evans, PPS
- Retailing**
Jonathan Baldock, Donaldsons

14:15 Choice of Workshops (repeated)

How Will the Changes to the System Alter the Way Elected Members Work?
Paul Coen, Local Government Association

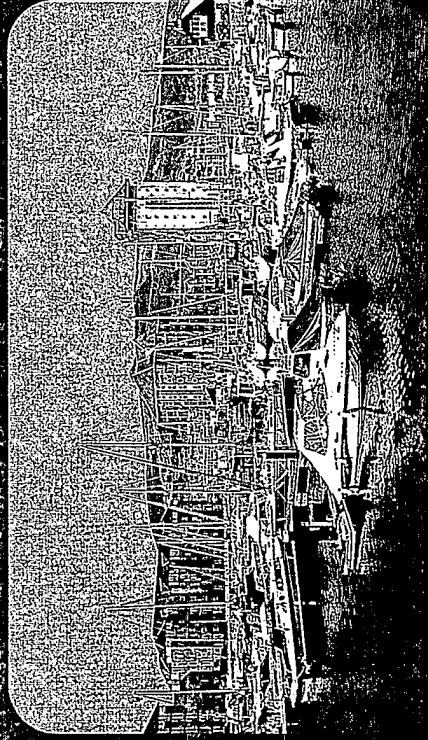
20:00 Civic Reception

Hosted by City & County of Swansea

Tuesday 4 September

End of Elected Members' School - Delegates must vacate their rooms by 10:00

Study Tours



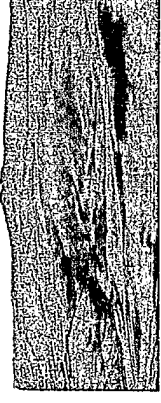
Study Tours

Places on all tours are limited and tickets should be booked in advance on the booking form.

Afan Forest Park (Planners' School 1)

An opportunity to look at landscape, tourism and recreation regeneration of a former mining valley, renowned for its impressive array of challenging world class mountain bike routes as well as leisure cycling and walking. The tour will start at Glyncoerrwg with a short look around the Visitor Centre, the start of the mountain bike trail and commercial development in Glyncoerrwg. The group will then visit Afan Forest Park where they will have a short talk about the Park before exploring the valley's mining history in the Miners Museum and visiting Tylmaen Theatre, the amphitheatre in the woods.

Please note: this tour is wheelchair accessible although at the Forest Park, access is better via the use of one of the park's beamer trampers.



This amazing landscape has now been officially recognised as one of the most important geological landscapes in Europe. In October 2005, the Brecon Beacons National Park Authority was awarded membership of the highly prestigious European Geopark Network.

The tour to the Brecon Beacons in its 50th anniversary year of national park designation provides an opportunity to visit Craig y Nos Country Park and find out more about geopark status, to look at how the national park authority is encouraging sustainable tourism and to explore how regeneration and renewal is being encouraged within the historic centre of Brecon.

The tour will look at the impact on this precious protected landscape of the cross country pipeline, approved by the Department for Trade and Industry to carry Liquefied Natural Gas (LNG) for the National Grid across the breadth of Wales, from Pembrokeshire to Gloucestershire.

Enjoy a brief visit to the Brecon Beacons Mountain Centre, some 1100ft/335m above sea level, with stunning views of Pen Y Fan, the highest mountain in South Wales served up with your afternoon tea.

Please note: this tour is wheelchair accessible.

Brecon Beacons (Elected Members' School)

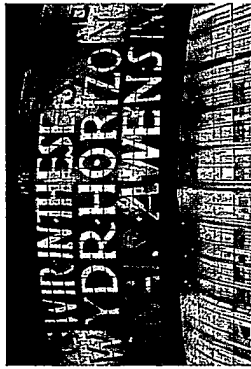
Brecon Beacons National Park is a landscape that offers spectacular mountain ranges, internationally renowned geology, bountiful wildlife and diverse recreational opportunities. It contains some of the most spectacular and distinctive upland formations in southern Britain and covers an area of 1347 sq km (520 sq miles).

Cardiff Bay

(Planners' Schools 1 & 2)

This tour will travel from Swansea along the M4 corridor to Cardiff Bay, one of the major regeneration schemes in the UK. There will be an opportunity to have a panoramic view of the Barrage, the 200 ha freshwater lake and 13km of waterfront that has been created following impoundment and also to view the International Sports Village, a £700m mixed use development including major sports facilities, retail units and apartments.

The group will travel over the Barrage to the water bus stop and board the "Seren y Bai" taking a cruise around the Bay and travelling up the River Ely which is a wildlife corridor and the River Taff which is more urban in character. This will enable the group to view the many new developments that have taken place around the waterfront, before disembarking at a landing stage near to the "Senedd" to have a guided tour of the recently completed home of the Welsh Assembly. The landmark building was designed by the Richard Rogers



Partnership to reflect the National Assembly's core philosophy of openness and transparency. The building has been constructed to high standards of environmental performance with energy consumption and waste minimised.

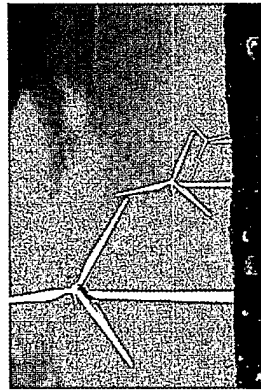
Finally, the group will rejoin the coach after walking across the Oval Basin and the Wales Millennium Centre, giving the chance for Torchwood fans to see the famous head quarters!

Please note: this tour is wheelchair accessible.

Ffynnon Oer

(Planners' School 1)

This tour gives the chance to visit a fully operational wind farm, comprising 16 wind turbines with a total installed capacity of 32,000 megawatts, sufficient to supply the average needs of 17,000 homes. Commissioned in June 2006, Ffynnon Oer Wind Farm is located on rough grazing upland between the Neath and Afan Valleys in the County Borough of Neath Port Talbot. Although relatively isolated, there is widespread evidence of past industrial activity on the site and of an earlier human settlement.



Alongside development of the windfarm by power renewables have been environmental and community benefits including the implementation of a habitat management plan for the site, of local nature conservation interest, work through local schools to engage young people on the issues of climate change, energy supply and use and conservation and work to establish a locally managed community trust fund to support projects within the local community. The habitat management plan for the windfarm has included restoration of blanket bog, heathland recovery, increased availability of wet areas and potential nesting sites for wetland birds and increased availability of drystone walls.

The visit will also provide an opportunity to consider designated areas of search for Wind Farms, to highlight the wide area affected, look at the site(s) from a range of viewpoints and consider the economic and social benefits to affected communities.

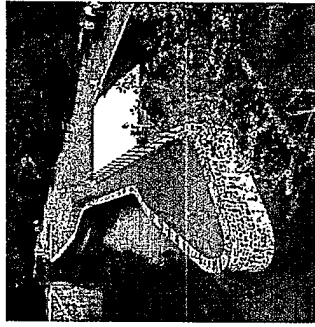
Please note: this tour is wheelchair accessible.

Neath Canal

(Elected Members' and Planners' School 2)

An opportunity to look at how established and continuing work on the Neath Canal between Neath and Glynneath contributes to economic regeneration, leisure and well-being and to examine aspirations to eventually make an integrated waterway in Swansea and Neath Port Talbot.

The tour will begin with a walk around the Canal basin area looking at the regeneration locally, followed by a visit to the Aberdulais Falls for a tea stop and talk on the linkages between the different canals.



A short walk to look at the meeting of the two canals at the Canal Basin will follow. Then the group will go to Ynys y Bwllwg to look at the Aqueduct and the tour will end with a stroll along the towpath at the Resolven Canal Basin to view a restored lock.

Please note: the canal towpath is largely accessible to wheelchair users.

Gower AONB

(Elected Members' and Planners' School 2)

Gower was designated as the first AONB in 1956. This tour will look at examples of what has been achieved since the introduction of the Welsh Assembly Government's Sustainable Development Fund in 2001. It will look at several projects supported by SDF funding and see how they have impacted across a range of areas from sustainable development to partnership working and how they can promote sustainable social and economic diversity in an AONB



The tour will include visits to the Bishop's Wood Local Nature Reserve, Caswell Bay and the Nicholaston House Bird Garden Project.

Please note: this tour is wheelchair accessible.

Swansea City & Maritime Quarter

(Elected Members' & Planners' Schools 1 & 2)

The vision for Swansea; to create a distinctive European 21st century waterfront city, will be illustrated by a tour of its prime regeneration areas. The heart of the Centre is at a critical stage in redefining its role as a regional shopping and cultural centre with key initiatives in place to create a distinctive and vibrant mixed use City Centre, with accessibility and design quality its keystone. The Maritime Quarter, one of the earliest UK examples of dockland regeneration is experiencing a further renaissance with Wales' tallest residential tower at Quay. SA1 Swansea Waterfront, set around a new marina in the imposing Prince of Wales Dock, has the highest aspirations to create a truly international waterside destination and is setting new benchmarks for sustainable, top quality and innovative new development delivered through successful master planning and efficient partnership working.

Please note: that the closeness of the City Centre to the Waterfront means that much of this tour will be on foot. It is also wheelchair accessible.