

Copeland Borough Council Organisation Chart as at 24 April 2017 Version 1

Key

FTE Full time Equivalent

FTC Fixed term contract

ML Maternity Leave

Sec Secondment

JS Job Share

PS Protected Salary

Temp Temporary

Posts in *Italics* indicate they are funded from other sources

24 April 2017

Corporate Leadership Team Structure

Elected Mayor

Managing Director
(Head of Paid Service,
Acting Returning Officer
and Electoral
Registration Officer)

- Providing:**
- Nuclear Programme
 - Economic Development & Socio Economics
 - Planning Policy
 - Development Control
 - Building Control
 - Electoral Services
 - Environmental Health
 - Political Advisor
 - Communications
 - Emergency Planning and Business Continuity
 - Flooding and Coastal Defence
 - Licensing and Land Charges

**Director of Customer
and Community
Services**

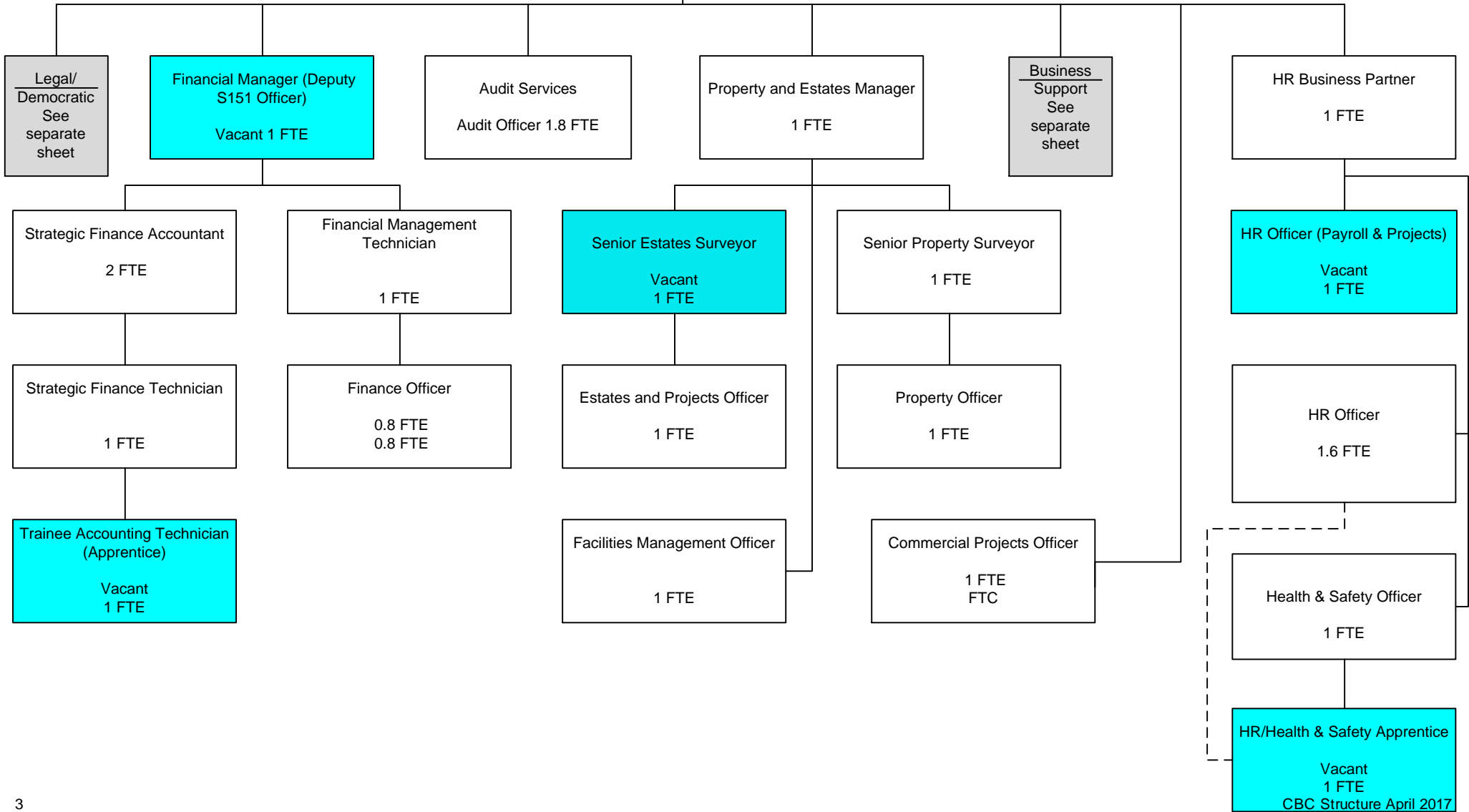
- Providing:**
- Strategic Housing
 - Copeland Community Fund
 - Community Regeneration
 - Leisure Contract
 - Beacon Museum
 - Customer Services
 - Revenues and Benefits
 - Parks, Cemeteries, Crematorium
 - Waste & Enforcement
 - Safeguarding
 - Community Safety

**Director of
Commercial and
Corporate Resources
(Section 151 Officer)**

- Providing:**
- Financial Services
 - Audit
 - Risk Management
 - Corporate Health & Safety
 - Contract Management & Procurement
 - Human Resources
 - Property Services
 - ICT Services
 - Legal Services
 - Democratic Services & Information
 - Personal Assistants to the Mayor, Managing Director and Executive Directors
 - Programmes & Performance
 - Commercial
 - Budget Strategy
 - Delivering Differently

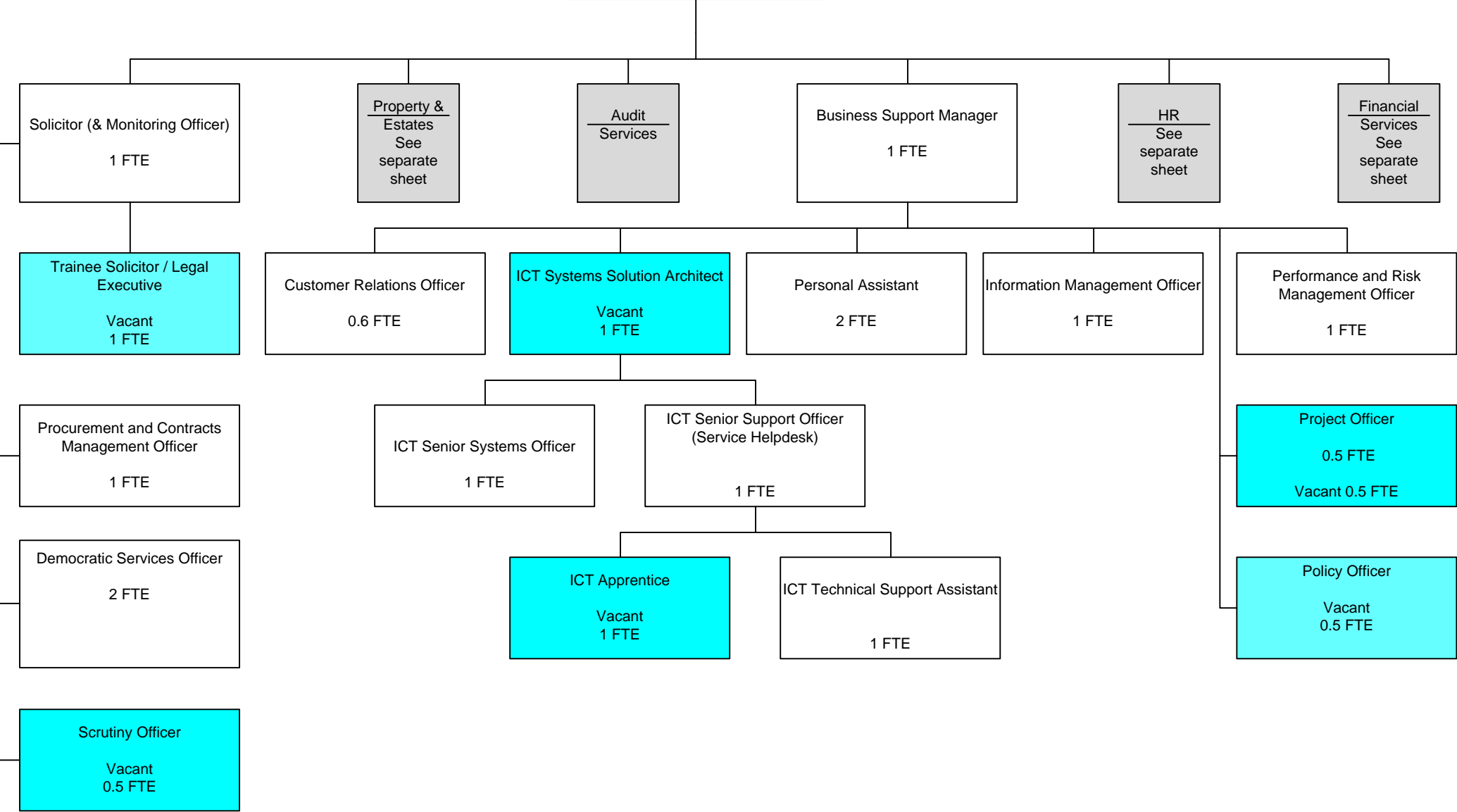
Commercial and Corporate Resources

Director of Commercial and Corporate Resources



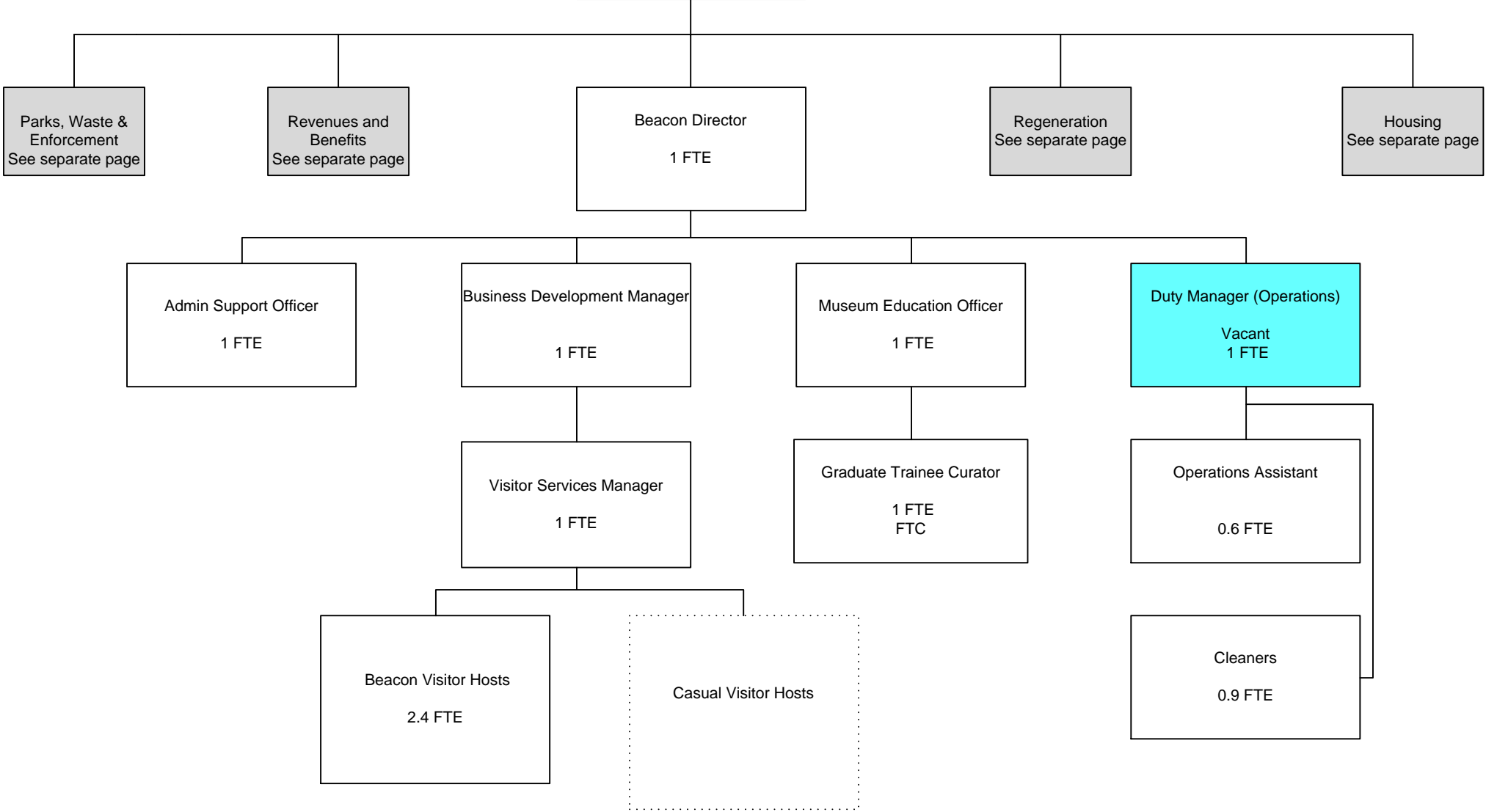
Commercial and Corporate Resources

Director of Commercial and Corporate Resources



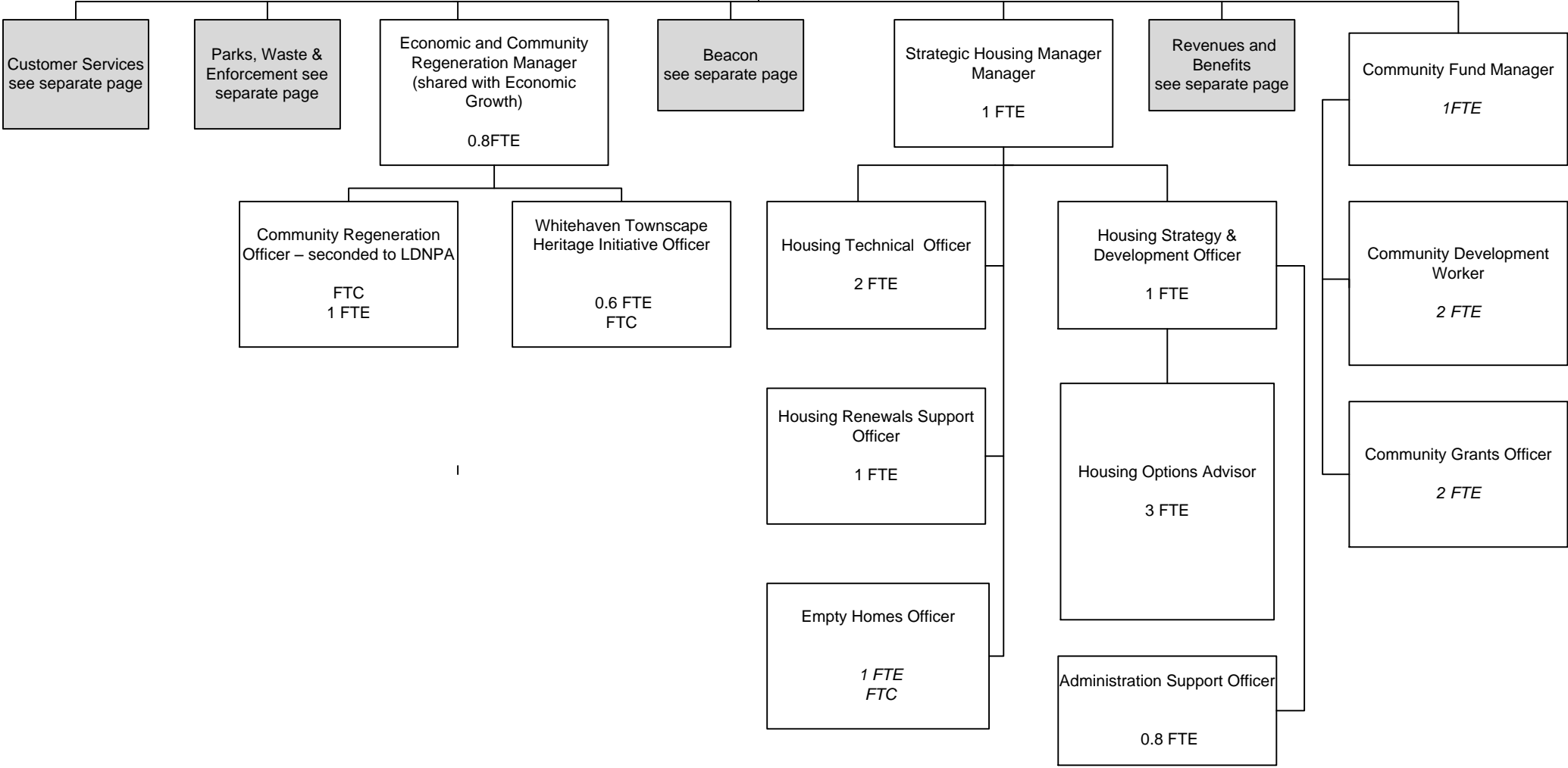
Customer and Community Services

Director of Customer and Community Services



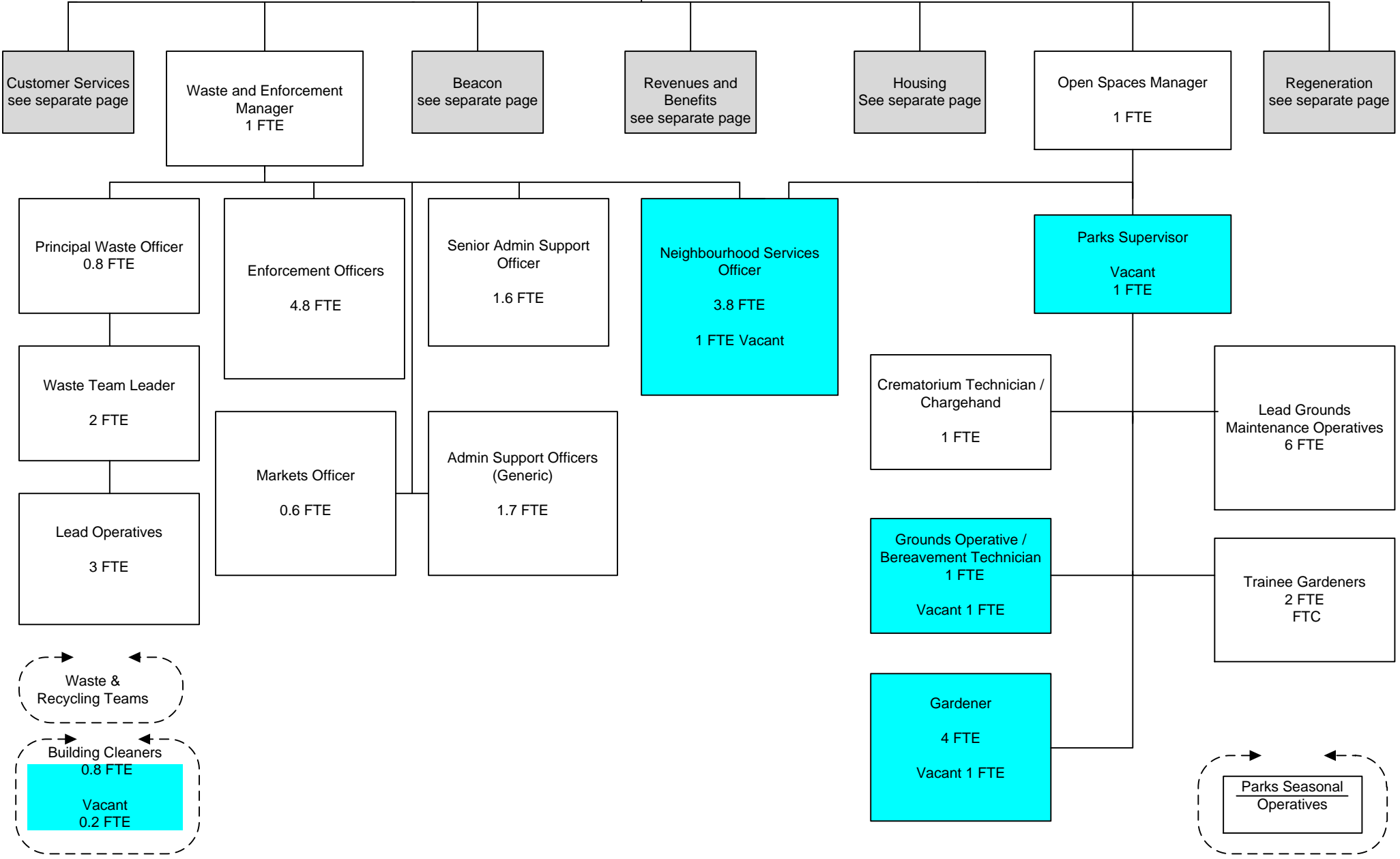
Customer and Community Services

Director of Customer and Community Services



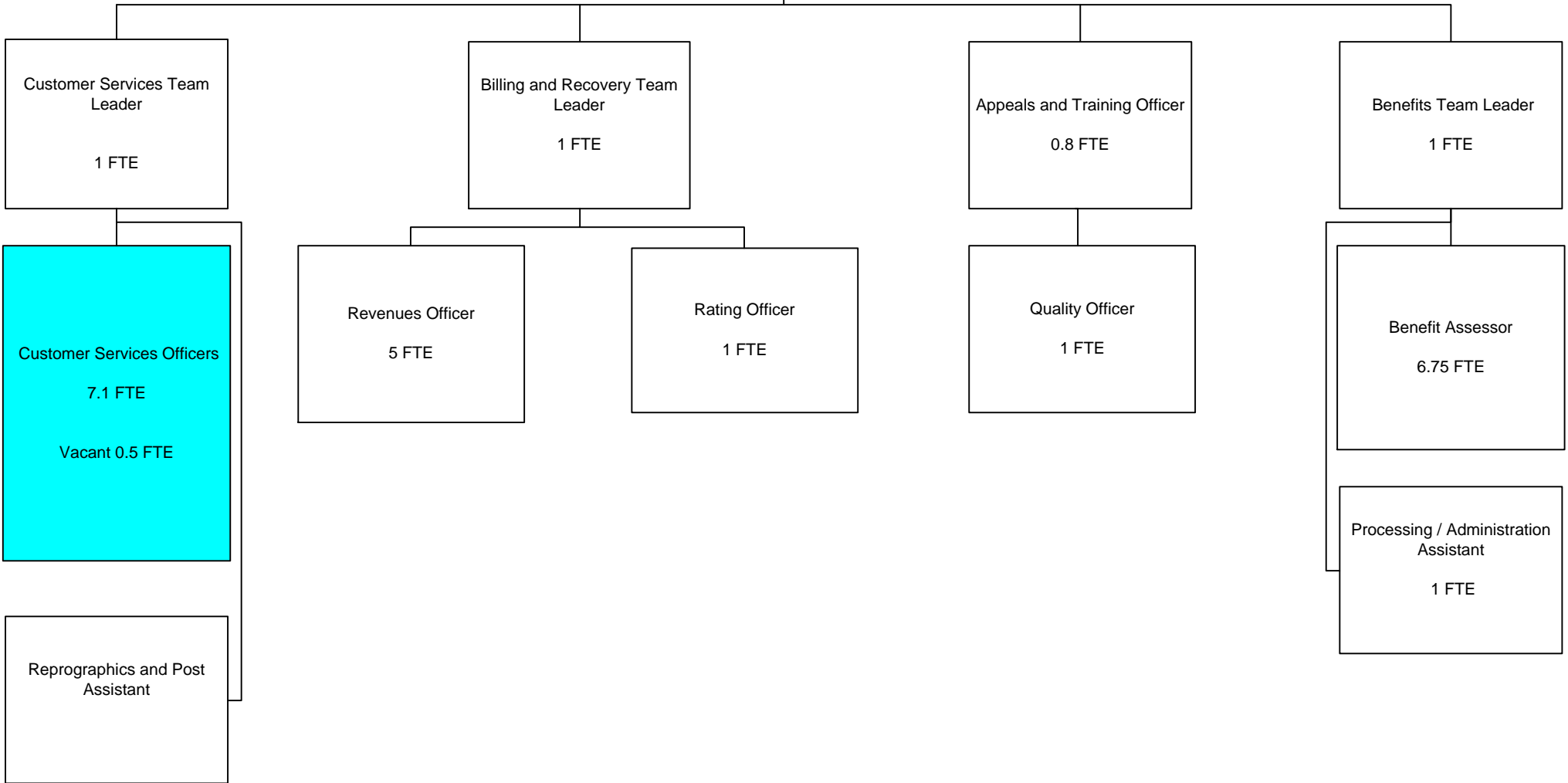
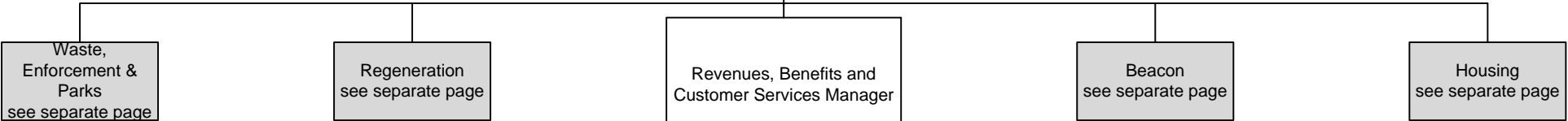
Customer and Community Services

Director of Customer and Community Services



Customer and Community Services

Director of Customer and Community Services



Managing Director

Managing Director

Comms
See separate page

Nuclear Projects and Programmes Manager

Planning Development Manager
1 FTE

Env
Health
See separate page

Strategic Planning Manager
1 FTE

Economic and Community
Regeneration Manager
(shared with Customer &
Community Services)
0.8FTE

Building Control Manager
1 FTE

Nuclear Manager
1 FTE

Senior Development
Management Officer
0.8 FTE

Senior Planning Policy Officer
Vacant 1 FTE
FTC

Regeneration Projects Officer
1 FTE

Principal Building Control
Surveyor
1 FTE

Nuclear Officer
Vacant 1 FTE

Senior Development
Management Officer
Vacant 1 FTE

Planning Policy Officer
1 FTE

Work & Skills Officer
1 FTE
FTC

Building Control Surveyors
3 FTE

Nuclear & Planning Programme
and Project Support Officer
1 FTE

Development Management
Officers
2 FTE

Planning Policy Technical
Officer
1 FTE

Systems Support Officer
1 FTE

Planning Officer (Enforcement)
Vacant
1 FTE

Conservation & Design Officer
0.6 FTE
FTC

Technical Support Officer
(Building Control)
1 FTE

Development Control Technical
Officer (Validation &
Registration)
0.6 FTE

Development Control Technical
Support Officers
1.6 FTE

