



Proud of our past. Energised for our future.

Copeland

Local Development Framework

Core Strategy and Development Management Policies DPD

Pre-submission Draft; Statement of Consultation

May 2012

Contents

The consultation and involvement process	Page 5
Annex 1: The Statement of Community Involvement	Page 7
Annex 2: 'Issues and Options' stage	Page 11
Annex 3: 'Preferred Options' stage	Page 21

The consultation and involvement process

The Statement of Community Involvement

This was adopted in January 2008, and revised in September of that year to incorporate procedural changes brought in by the 2008 Planning Act.

Although the 2008 Act did away with the 'Issues and Options' and 'Preferred Options' terminology, the former stage had already been set in motion, and it has been considered logical to present the subsequent (2010) consultation as a 'preferred option'.

The SCI sets out a range of consultation and involvement possibilities. In keeping with a strategic document, consultation, especially in the later stages, has focused on the methods which the SCI sets out as standard (advertisement of published documents, use of the Council's web site, and local mass media), along with targeted locality-based meetings – either to invited stakeholder audiences or public 'drop in' sessions. The SCI is available on the Ldf section of the Council's web site www.copeland.gov.uk/ldf, and its Executive Summary is at Annex 1 (page 7).

Early engagement

'Stakeholder Launch' events were held in November 2008, one for stakeholders in the Borough and another for external invitees. This set the agenda for further work; the framework of identified issues is set out in an Appendix to the report of the 'Issues and Options' stage (page 18).

The Issues and Options stage

This stage of consultation took place in May to July 2008 and the report of the process is at Annex 2 (page 11). The consultation report from that stage, and the summary of responses, are on the LDF pages of the Council's web site.

Policy options set out at that stage were set out with reference to national and regional planning policy, and the circumstances of the Borough. The general policy approach was carried forward from that already expressed in the adopted Local Plan, which at that stage was only two years old. In general there was support for this, although opinion was more split with reference to how development should be distributed between Copeland's settlements.

Preferred Options document consultation

The 'Preferred Options' document was published in May 2010 for consultation in May to July.

Alongside publicity in accordance with the Statement of Community Involvement, public meetings were held in Cleator Moor, Egremont, Millom, Seascale and Whitehaven. The report of that stage of consultation is at Annex 3 (page 21).

In total 467 representations, were received from 77 respondents. Only 60 of these were expressed as objections. About half of the objections have either been accepted, with the plan modified, or have been met (in the Council's opinion) by clarificatory comment. Others will be addressed in the site allocation process. A few (mostly relating to the nuclear power station proposals) have been overtaken by events or by the introduction of the major infrastructure planning process. Only nine have not been accepted.

In addition, over 300 comments have been made suggesting amendments. Most of these have been made by statutory consultees and by the County Council. The Borough Council has endeavoured to take these suggestions on board and has met, or at least corresponded with, those bodies to agree common positions wherever possible.

The main area of debate remains around the strategic distribution of development between settlements. The Council remains convinced that it is desirable in the cause of regeneration, and inherently more sustainable, to focus the bulk of development in the four towns. Whilst there is disagreement, there is also broad support for this approach; in response to comments there have been amendments and clarifications to strategic policies, particularly with reference to rural settlement viability and sustainability. The question is looked at in detail in topic papers on housing and employment land.

Other key areas of concern relate to nuclear-related development and wind energy. In these instances, policy has to conform to national policy, and in the former case must defer to National Policy Statements and the role of the Major Infrastructure planning process.

A full summary of the representations made at that stage, and the Council's responses, is available in the Core Strategy supporting documents section of the web site at www.copeland.gov.uk/ldf.

Executive Summary

Introduction

The Planning and Compulsory Purchase Act 2004 introduced many changes to the planning regime operating in England and Wales – the work which in Copeland has previously been delivered under the “Local Plans” banner, will be replaced by the “Local Development Framework” (LDF). The Act’s reforms are intended to make the preparation of development plans and other non-statutory documents quicker and more flexible, with increased community involvement. Each local planning authority is required to produce a Statement of Community Involvement which sets out how and when the local community and stakeholders will be involved in the planning process.

The Local Development Framework consists of a number of development plan documents; at the local level the Council is responsible for the production of Local Development Documents. This document aims to set down how and when the Council will involve the local community and stakeholders in the production of Local Development Documents and also in the consideration of planning applications.

Planning Policy

Who will we consult?

The Regulations for the Planning and Compulsory Purchase Act 2004 set down specific consultation bodies that must be consulted; these are listed in Section 8 of the SCI. The Council is committed to involving as many organisations, groups and individuals as possible in the planning process.

A database of Local Development Framework contacts has been created; this will be used to consult on the preparation of Local Development Documents where appropriate. The database will be maintained to ensure it is up to date. Anyone can request their details be added to/deleted from the LDF database at any time to receive consultation documents.

The Council is keen to engage those people who belong to traditionally under-represented groups, i.e. single parent families, young people, people from ethnic minority groups, homeless people, people with disabilities, people living in areas of deprivation or low income and people living in remote areas.

The Council will work with the West Cumbria Local Strategic Partnership to ensure close co-ordination of consultation between planning and the West Cumbria Community Strategy. We will endeavour to utilise to maximum effect the *Community Gateway* consultation network which is currently being developed, in particular an older person's forum, disability forum and a young person's network.

How will we consult you?

The Planning and Compulsory Purchase Act 2004 Regulations set down minimum public participation requirements which each local planning authority must comply with in the production of Local Development Documents which make up the Local Development Framework. The Council intends to meet the requirements in the regulations and, where possible, exceed these when both staff time and financial resources allow. The Council as a minimum will meet the following minimum requirements as set out in the regulations:

- Make copies of all documentation available for inspection during normal office hours at the council's principal office and other suitable locations for the duration of the six week consultation period;

- Place all documentation and supporting information on the council’s website (www.copeland.gov.uk) with details of where and when the documents are available to be inspected;
- Send copies of relevant material to the Government Office and to each statutory consultee in accordance with the guidance in Planning Policy Statement 12: Local Development Frameworks (PPS12);
- Give notice by advertisement in local newspapers stating where and when documents can be inspected, how copies can be obtained, where to send representations and the closing date for representations.

The Council recognise that consultation methods may need to be tailored, we will identify the most appropriate methods of consultation for the specific Local Development Document by considering the characteristics of each sector of the community that will be involved. The following table identifies consultation techniques to be used for each type of Local Development Document:

	Statement of Community Involvement	Core Strategy	General Development Control Policies and Site Specific Allocations	1 2 Area Action Plans	3 Supplementary Planning Documents (SPD)
Consultation Drafts	✓	✓	✓	✓	✓
Council Website	✓	✓	✓	✓	✓
Neighbourhood Forums	✗	? (selected)	? (selected)	? (selected)	? (selected)
Presentations to Meetings	✗	?	?	?	?
Topic-based Focus Groups	✗	?	✓	✓	?

Exhibitions	x	?	✓	✓	?
Leaflets, Posters & Letters	?	?	?	?	?
Questionnaire	✓	?	?	?	?
Media	✓	✓	✓	✓	✓
Planning for Real	x	?	?	?	?

✓ - Yes x - No ? – Possible, where relevant, and resources allow

How will we report back to you?

In addition to the formal consideration of Local Development Documents by the Executive, meetings of the Local Development Framework Working Party will be held where necessary to examine issues involved in the preparation of Local Development Documents and advise the Executive accordingly. We will publish on our website and make available copies of all representations received at our main offices and the Council’s response and justification.

Representations received will be acknowledged. Consultees who have submitted comments will be informed of the Council’s intended response. This information will be made available to view on the Council’s website, the Council’s offices at Whitehaven and Millom and at libraries in the Copeland Borough.

The Council will notify those who submit representations and those who request to be notified of the submission of a Local Development Document to the Secretary of State and then of its adoption.

Local Development Framework (LDF) Consultation Statement

This document outlines the consultation process which was undertaken for the Copeland LDF Issues and Options Consultation.

Stakeholder Consultation Events

Prior to the LDF Issues and Options consultation, we held a Stakeholder Workshop in November 2008. The Workshops were held over two days and were split into external and internal stakeholders. Results from the events were used to inform the LDF Issues and Options Consultation document. A summary of the Stakeholder Consultation Events can be found in Appendix A.

Local Development Framework Issues and Options Consultation

The Copeland LDF Issues and Options Consultation was held from 28 May 2009 to 10 July 2009. The deadline was extended further to the 7 August 2009, this was due to a number of public meetings which were attended took place after the initial deadline.

At the initial consultation stage we asked for views on the issues facing the Copeland borough and the solutions (options).

Deposit copies

The LDF Consultation Document, Sustainability Appraisal Scoping Report, Habitats Regulation Assessment document were placed at the following locations for a period of six weeks:

- Copeland Borough Council offices in Whitehaven and Millom:
The Copeland Centre, Catherine Street, Whitehaven, CA28 7SJ
Millom Council Offices, St George's Road, Millom, LA18
- Libraries in the Copeland Borough (see Appendix A for a list of libraries and addresses).

Press Advert

An advert was placed in the Whitehaven News on Thursday 28 May 2009 (see Appendix B)

Press Release

A Press release was issued, an article was featured in The Whitehaven news on Thursday 4 June 2009 and North West Evening Mail (see Appendix B).

Mailing

We sent a mailing to 469 contacts from our LDF database. 118 contacts were sent the document and letter (see Appendix C for list of contacts) and 351 contacts were sent a letter which informed them the LDF Consultation was underway and where the documents were available to view (see Appendix D for list of contacts).

Website

The LDF Consultation documents were also available to download from the Council's website. See Appendix E for webpages.

Neighbourhood Forums

The Planning Policy Team attended and presented to most Neighbourhood Forum meetings in the Copeland borough during June/July 2009. For those which were not attended information was sent. See Appendix F for list of Neighbourhood Forums.

Representations

44 representations were received in response to the LDF Issues and Options Consultation document.

32 Calls for sites responses were received.

Appendix A - Stakeholder Consultation Events Summary

Copeland Borough Council Local Development Framework

Stakeholder Launch Events- November 2008

In accordance with the Planning and Compulsory Purchase Act 2004, Copeland Borough Council is required to produce a Local Development Framework (LDF) to replace its Local Plan which was adopted in 2006. One of the key principles of the new planning system is an increased focus upon the need to fully engage the local community and other stakeholders in the preparation of the LDF. The concept of 'front loading' is an important element of community engagement. Government guidance emphasises the need to provide the local community with opportunities to influence the early preparation of each document that will form part of the LDF.

In accordance with the updated Local Development Scheme¹ work has commenced on the preparation of the Core Strategy and other LDF documents.

As part of this process, and in line with government and local planning policy, two stakeholder events were held on 26th November 2008, one for internal stakeholders and one for external stakeholders.

These events were the first engagement / consultation events for the LDF and focused on making people aware that the Council had starting work on the LDF, outlining what the LDF is and asking them to help develop a 'vision' for the Borough for the next 15-20 years. The aim of both events was to raise the profile of the LDF and to foster collaborative working in order to ensure future planning policy in the Borough is as inclusive as possible and truly reflects community aspirations.

This report aims to summarise the findings of these events.

Copeland Borough Council Statement of Community Involvement (SCI)

The Council is required to produce a Statement of Community Involvement as part of the new planning system. The Statement of Community Involvement aims to set down how and when the Council will involve the local community in the planning process.

This early community engagement falls within the pre-production stage or stage 1 of development plan document preparation (page 25 of the SCI). The SCI recognises that this stage will focus on community involvement, particularly identifying issues and concerns.

Methodology

Two stakeholder events were held at Copeland Borough Council Offices, the Copeland Centre, on the 26th November, one in the morning and one in the afternoon.

A list of invited internal and external stakeholders and actual attendees is provided in Appendix 1.

¹ **The Local Development Scheme (LDS) identifies which LDF documents the Council is preparing and the programme for each. The LDS 2006 has been replaced by the LDS 2008.**

Both events started with a presentation describing the LDF and how stakeholders could help to develop the evidence base and help identify the main issues the LDF will need to address.

During the External Stakeholder event, the stakeholders were split up into groups to in order to take part in a 'visioning' exercise. The stakeholders were split up into three groups centred on the themes of Economy, Environment and Community. Where possible, stakeholders had been pre-allocated a group, reflecting the nature of their stakeholder interest in the LDF (i.e. the Environment Agency were in the Environment group).

During the Internal Stakeholder event, the stakeholders discussed all of the issues collectively, as this was a much smaller group.

The aim of this session was to have participants think beyond the issues and problems being faced today and imagine what the future may hold for Copeland. Participants discussed the drivers that may affect the Borough in the next 10-20 years, and any changes foreseen. It was hoped that the visioning exercise would bring stakeholders together to develop a vision that satisfies many perspectives. Clearly, this vision may not suit all stakeholders perfectly, but the aim is to find a vision which combines as many social, economic and environmental goals as feasible, given the diversity of views which exist. The exercise sought answers to the following questions:

1. Where are we now?
2. Where do we want to be?
3. How are we going to get there?

Summary

The responses from the visioning exercise are shown in the tables below and in Figure 1.

Economy

- Establish an individual identify for Copeland- tourism, employment, retail and cultural offer
- Transport and accessibility-dual carriageway from the north to Sellafield, support Carlisle Airport, small container port, two track railway line
- Realism of transport improvements
- Diversify economic base - build on our expertise in engineering and wider energy sector
- Exploit the coast for leisure, employment and cultural activities - move away from 'West Lakes' tag. 'Joined-up' marketing.
- Improve educational facilities- Academy Schools / Apprenticeship Academy- linked to Sellafield
- University links with schools should be improved
- Nuclear repository / Nuclear New Build
- Focus investment in areas outside of Whitehaven
- Improved health and housing provision
- Expansion of Haverigg prison
- Energy Coast Masterplan provides guidance/ framework
- Quality of local shops and facilities
- Concentrate on the things we can influence within Copeland
- Link between energy production / location and a levy on fuel prices.
- Community-led renewable energy production, including biomass, CHP etc.

Environment

- Promote green infrastructure and require use of SUDs
- Energy efficient buildings regulations / planning guidance
- Minimise water use and separate surface water from foul water
- Concentrate on use of renewables other than wind (visually intrusive) such as tidal, hydro, small CHP plants
- Focus development on brownfield sites not greenfield
- Improve walking, bus routes and cycling routes throughout the borough

- Use planning contributions to achieve environmental improvements – to benefit the whole community
- Consider re-use of nuclear waste
- Address issues of climate change such as coastal erosion, surface water flooding and CO2 emissions
- New development to be allocated away from flood risk areas – re-consider development at Pow Beck
- Preserve biodiversity values present in the local area
- Rural location is our unique selling point
- Focus on the role of Regional Parks
- Enhancement of River Keekle
- River Basin Management Plan for North West (as promoted in at the European level via the Water Framework Directive).

Community

- Town Council for Whitehaven
- Key towns and villages to be linked via one network and integrated plans
- New community hospital / key service centres for each locality
- Section 106 Contributions to be spent in the area of development where they are generated
- Maximise local supply chain into Sellafield
- Closer community cohesion between community and Haverigg prison
- Investment to focus on areas outside of Lillyhall
- Encourage young people to stay in the area via jobs and appropriate housing
- Houses for local people
- Diverse communities- not just one age group living together
- Extra Care facilities
- Renewal policies for private housing sector
- Health and education improvements
- Housing needs survey and understanding
- Address demographic changes in the Borough
- Establish the Borough as a place where people want to work and live- a sustainable community
- Self-sustainability and locality working
- The remoteness of the Borough should be seen as a positive
- Fuel poverty should be addressed
- LDF to fit with Local Health Plan
- Improve cycle track facilities
- Have a broader vision for communities- establish best practice examples across the Borough
- Develop infrastructure links between Millom and M65
- Different governance for different localities
- Greater youth facilities in Cleator Moor
- Offer opportunities for people at each stage of life across Copeland
- Coordinate housing provision with investment in employment and services
- Integrate employment site support into Sec. 106

Stakeholders also had the opportunity to write an individual vision for Copeland or comment on other issues they felt were important in a consultation feedback form. Some of the responses to the feedback form are shown below:

“Copeland should be able to compete with the UK as a whole, recognising its uniqueness. Nuclear role for the UK that we have to exploit.”

“Improved education to increase local aspirations.”

“Strategic approach to development should be based upon an understanding of the environmental capacity of Copeland.”

***“With our coastal resource and national park Tourism is a key area to be developed”.
“Maximum employment, this would naturally increase everything needed for the area
in terms of education, health and retail.”***

***“We can build a sustainable economy based on nuclear expertise and our beautiful
coastline and mountainous hinterland.”***

***“Vibrant diverse economy, with improves transport links, improved education – raising
aspirations.”***

“A sustainable community- where people want to live, work and enjoy their leisure.”

***“Strong, diverse economy and the improvements to areas like health, education,
housing etc that emerge from this.”***

The responses suggest that stakeholders feel strongly about the following issues:

- Establishing a unique identity for Copeland, particularly in relation to Tourism
- Improving transport infrastructure within the Borough
- Diversifying the economic base of the Borough
- Building on the expertise in the energy sector
- Provision of green infrastructure
- Encouragement of young people to stay in the Borough via the provision of jobs and appropriate housing
- Health and education improvements
- Establishment of diverse, sustainable communities

Application of Results

The important issues identified in responses to the early engagement largely coincide with those in the Sustainable Community Strategy. The LDF will be closely linked to the Sustainable Community Strategy so many of the concerns will be addressed. The results of early engagement will be taken into account in the next stage of preparing the Core Strategy– Issues & Options.

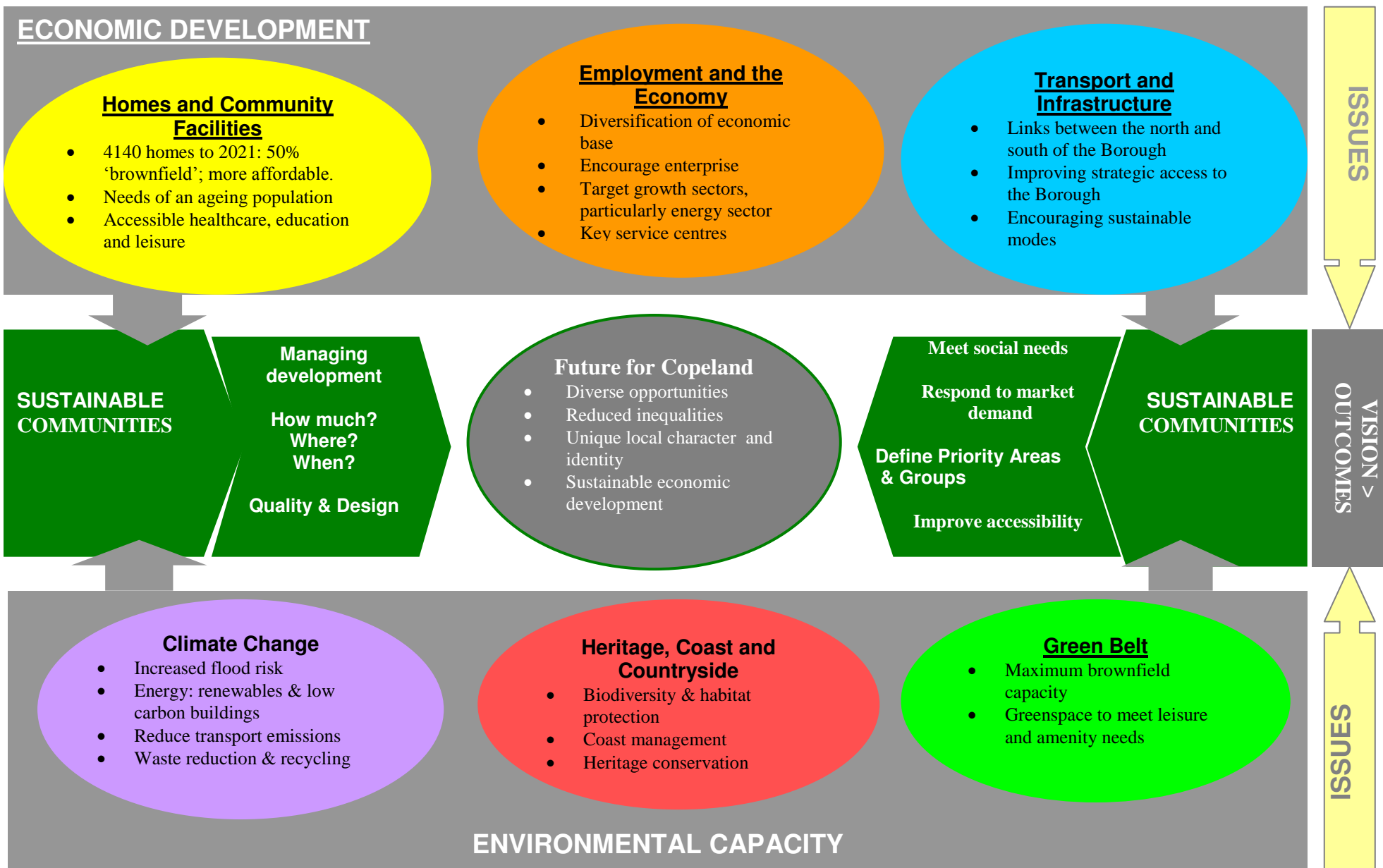
The Core Strategy must start from a clear 15-year vision for Copeland and its communities and demonstrate how this can be delivered by the Council and its partners through the preferred spatial strategy and policies.

The first major milestone in the preparation of the Core Strategy will be a wide consultation on Issues and Options. Our current programme is to produce a consultation document early in 2009. It is essential that we make significant progress in partner engagement on the Issues and Options stage by early-mid 2009.

The consultation has provided useful feedback on local priorities and has overall endorsed the aims of the Sustainable Community Strategy. In addition, there are already plenty of pointers to the broad range and scale of the issues we will need to address in our Core Strategy. For example, there is the recently adopted Regional Spatial Strategy and plans and strategies of our partners, all of which set out objectives and priority outcomes. Perhaps the major difference is that the Core Strategy will need to look forward over a longer period (15-20 years) than many of these plans. It is worth noting at this stage that the global challenge of

climate change and developing local spatial polices which will minimise Copeland's environmental footprint will be a cross-cutting issue.

Figure 1: Core Strategy – Issues Identified



What Happens Next?

The next step, with the support of our partners, is to develop the spatial vision and objectives for the Core Strategy, to sharpen and prioritise the issues that it will need to address and identify the options available for delivering the desired outcomes. This must include consideration of the evidence base and the deliverability of options.

It is clear that the spatial planning focus of the Core Strategy, and the way its preparation must be embedded in partnership and corporate working, make it a very different animal to the Local Plan that it will replace.

Appendix 1: Levels of Attendance

Invited External Stakeholders

County Cllr Ken Ross
Steve Bradley – West Lakes Scientific Consulting
Alan Hubbard – National Trust
Tim Hirst – West Cumbria Development Fund
Cllr R Calvin
Denise Smalley – Western Lake District tourism Partnership
Cllr Michael Mc Veigh
Cllr Hugh Branney
Christine Harrison - Cumbria PCT
Cllr Norman Williams
Sue Stevenson – Cumbria Strategic Partnership
Jim Robinson, Natural England
4NW
Carol Murdoch, The National Trust
Cllr Southward
Muir Lachlan
Michael Priestley – Connexions
Tiffany Hunt – The National Trust
Jim Robinson – Natural England
Cllr Gleaves
Eileen Eastwood
Carolyn Wilson – Mobile Operators Association
Edward Mills – Cumbria Woodlands
Cllr Cath Giel
Cllr Reg Heathcote
Cllr Peter Connoly
Suzanne Cooper – Cumbria County Council Community Unit
Sarah Mitchell – Regen NE Copeland
Chris Shaw – Moresby & Parton Parish Council & Cumbria Association of Local Councils
Cllr Brian Crawford – Millom Town Council
Peter Smith, Chairman of the St Bees Parish Council
Lynne Rushforth - Age Concern Northwest Cumbria
Peter Johnstone, Older Persons' Forum (West Cumbria)
Cllr Ray Cole
John Cass – Home Group / Copeland Homes
Jacqueline Cordy Young Cumbria
Cllr Robin Pitt
Carol Robertson – Whitehaven Town Centre Task Group
Celia MacKenzie - Whitehaven Harbour Commissioners
Alan Hurton – Regen NE Copeland
Richard Pealing – Cumbria Vision
Cllr John Kane
Cllr M Docherty
Mr R Mulholland – Cleator Moor Chamber of Trade
Cllr Sue Brown
Betty Ryan – Enterprise Whitehaven
Cllr Elaine Woodburn

Cllr W Southward
Michael Harrison – Environment Agency
Ian Walker - Environment Agency
Anne – Marie Willmott – Impact Housing Association
Richard Pearse – Friends of the Lake District
Graham Innes – Cumbria County Council
Cllr Alan Jacob
Cllr Geoff Garrity

David Hardman – United Utilities
Gail Staton – Home North West
Rachel Carol- Development Control CBC
Simon Blacker- Development Control CBC
Tony Nesbit – TUC
Diane Ward- Regeneration CBC
J. Jackson CBC
Diane Ward- Regeneration CBC
Anne Snape – FARP
Gill Baillie – GMB Union

Actual Attendees

Cllr Peter Connoly
Suzanne Cooper – Cumbria County Council Community Unit
Sarah Mitchell – Regen NE Copeland
Chris Shaw – Moresby & Parton Parish Council & Cumbria Association of Local Councils
Cllr Brian Crawford – Millom Town Council
Peter Smith, Chairman of the St Bees Parish Council
Lynne Rushforth - Age Concern Northwest Cumbria
Peter Johnstone, Older Persons' Forum (West Cumbria)
Cllr Ray Cole
John Cass – Home Group / Copeland Homes
Jacqueline Cordy Young Cumbria
Cllr Robin Pitt
Carol Robertson – Whitehaven Town Centre Task Group
Celia MacKenzie - Whitehaven Harbour Commissioners
Alan Hurton – Regen NE Copeland
Richard Pealing – Cumbria Vision
Cllr John Kane
Cllr M Docherty
Mr R Mulholland – Cleator Moor Chamber of Trade
Cllr Sue Brown
Betty Ryan – Enterprise Whitehaven
Cllr Elaine Woodburn
Cllr W Southward
Michael Harrison – Environment Agency
Ian Walker - Environment Agency
Anne – Marie Willmott – Impact Housing Association
Richard Pearse – Friends of the Lake District
Graham Innes – Cumbria County Council
Cllr Alan Jacob
Cllr Geoff Garrity
David Hardman – United Utilities
Gail Staton – Home North West
Rachel Carol- Development Control CBC
Simon Blacker- Development Control CBC
Tony Nesbit – TUC
J. Jackson CBC
Diane Ward- Regeneration CBC
Anne Snape – FARP
Gill Baillie – GMB Union

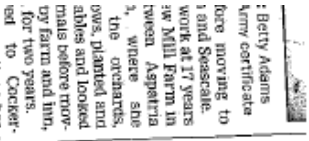
Invited Internal Stakeholders

Joy Bain- Finance
Jane Salt- Customer Services
Tony Pomfret- Development Control

Ian Curwen- Communications
Kate Skillicorn- Housing
Alan Davis- Housing
Laurie Priebe- Housing
Marilyn Robinson- Audit Manager
Mark Key- Building Control Manager
Julie Betteridge

Actual Attendees

Joy Bain- Finance
Jane Salt- Customer Services
Tony Pomfret- Development Control
Ian Curwen- Communications
Kate Skillicorn- Housing
Alan Davis- Housing
Laurie Priebe- Housing
Marilyn Robinson- Audit Manager
Mark Key- Building Control Manager
Julie Betteridge

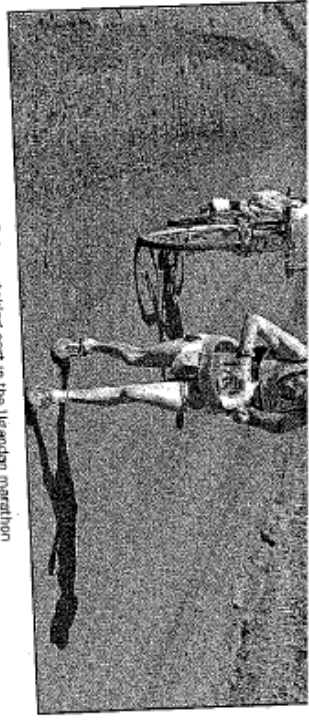


ILAND BRETT

Wed!



Organisation:
"It was harder than I thought, the weather was exceptionally hot and the course was a mixture of Tarmac, muddy paths, rocks, mudrain (heavy clay) roads and two bridges over the Nile," she said. "At times I felt like I was wearing lead boots."
"As there were only seven starters for the marathon the course was reported so that most of the off-road was re-peated."
"Reaching the finish and then having to start out again was very hard."
At one point on the route, Charin was running along a busy road lined with shops and people milling around.
"The Uganda women don't jive over on a late bill of terms, people could not have been kinder," she said.
Charin's husband, Chris, also took part in the first half marathon, and was there to congratulate her with others from the group who were enjoying a barbecue as she crossed the finishing line.
"I ran the whole way in the



■ FEELING THE HEAT: Charin Robson, taking part in the Ugandan marathon

Views sought on local planning issues

BY GALVAN ELLISON

IF you are interested in local planning issues then Copeland Council wants to hear your views.
It has put together a set of draft documents – called *Issues and Options* – about how the borough should be developed.
The Local Development Framework is a consultation document and will eventually replace the current Local Plan, covering all aspects of planning and development.
The council wants to know what you think about future development in the area as part of a consultation period which starts today.
Whether it is smaller planning issues, such as conservation projects such as a new nuclear reactor or combating climate change, the framework will address them all.
Council leader Elaine Woodburn said: "It is important people are able to have their say on how the borough will develop in the future."
"There are a number of important forces which will influence the future of the area, including Sellafield and the nuclear industry, the plans for Britain's Energy Coast and climate change and sustainability. All of these will be addressed as part of this consultation."
It will also cover issues like how many houses Copeland needs and where, how much land is needed for work places, the best way to set things out so people can easily travel between home and work, shops and leisure facilities, where leisure facilities, shops, services and community facilities should go.
Copeland will also be asking developers and land owners to put forward sites that they consider suitable for a particular development or area that they feel need protection.
The consultation period runs until Friday, July 10.
Copies of *Issues and Options* and a comments form are available from Copeland Borough Council offices in Whitehaven and Milton, full details are also available on the Copeland Council website, www.copeland.gov.uk.
Forms should be sent back to Planning Policy, Copeland Borough Council, The Copeland Centre, Catherine Street, Whitehaven, CA26 7SL.

Garden celebrations

COPELAND MP Jamie Reed has opened a long-awaited community garden in Whitehaven.
Greenbank Community Association marked the opening with a balloon race and arts and crafts.
The association's Anne



"The whole community will be able to use it. It is something everyone has wanted for a long time."
The event was one of many organised by Copeland Homes to mark European Neighbours' Day.
They included a fun day in groups to enable them to bond these celebrations.
The events were designed to bring together people of all generations to share their experiences and enjoy each other's company.
Maria Toonan, community regeneration co-ordinator for

I had been sponsored, I was determined to finish. So I tottered on, covered in dirt and a certain amount of blood."
"I finished to rapturous applause," Charin said. "Paula Radcliffe wouldn't have received a better reception! It was fantastic."
The cash raised by Charin, who thanks all her sponsors and her husband for their support, will go towards helping the gortillas and the surrounding community.
Despite such a gruelling event, Charin hasn't been deterred from her running. She and Chris will be setting off at this weekend to take part in a Lake District 26km race!

proyees and others.
Local winners were: Shepley Engineers Ltd, of Moor Row; National Nuclear Laboratory Ltd; Dibex Facilities Group; Sellafield Ltd; V7 CHP Plant; Sellafield Ltd; Nuclear Services; Shepparts Limited; Impwood Roofing Co; Jordan Nuclear Ltd; BAM Nuttal Ltd; qinetiQ MOD at Barmston; Low Level Waste Repository Ltd; Havel UK; O'Connor Fencing Ltd.
Tom Mulhoney, RosPA chief executive, said: "Health and safety tends to hit the headlines in the aftermath of major accidents or when it is deemed to have gone too far."
"But the reality is that millions of sensible safety decisions are taken across the country each day which actually prevent countless accidents and the suffering they cause."
"The RosPA Occupational Health and Safety Awards are a way of rewarding and highlighting those whose daily contribution keeps us safe and healthy. We congratulate winners for the commitment they have shown to continuous improvement in this sphere."
The awards were sponsored by the National Examination Board in Occupational Safety and Health (NEBOSH).

Glue theft

A WHITEHAVEN man has admitted stealing a tube of glue from WHITSON'S.
Sharr Partherson, prosecuting, said Sean Paul Reid Thompson took the £2.69 tube of glue from the Whitehaven store to fix his shoe.
Thompson, 34, of Calder Avenue, said he had a lot of problems recently.
He has been ordered to complete a six-month supervision order.

Table stolen

A WHITEHAVEN man has admitted stealing a table of value £100 from WHITSON'S.
Sharr Partherson, prosecuting, said Sean Paul Reid Thompson took the table from the Whitehaven store to fix his shoe.
Thompson, 34, of Calder Avenue, said he had a lot of problems recently.
He has been ordered to complete a six-month supervision order.

Appendix C - Libraries in the Copeland Borough

Cleator Moor Library
Market Square
CLEATOR MOOR
CA25 5AP

Distington Library
Community Centre
Church Road
Distington
Workington
CA14 5TE

Egremont Charles Edmonds
Library
Wyndham School
Egremont
CA22 2DH

Frizington Library
Main Street
Frizington
CA26 2DH

Gosforth Library
Public Hall
Gosforth
CA20 1AS

Hensingham Library
Richmond Hill Road
Whitehaven
CA28 8SU

Kells Library
High Road

Whitehaven
CA28 9PQ

Millom Library
St George's Road
Millom
LA18 4DD

Mirehouse Library
Mirehouse
WHITEHAVEN
CA28 8ER

Seascale Library
Gosforth Road
Seascale
CA20 1PN

St Bees Library
St Bees
CA27 0DE

Thornhill Library
Thornhill School
Ehen Road
Thornhill
Egremont
CA22 2SJ

Whitehaven Library
Lowther Street
Whitehaven
CA28 7QZ

Appendix D - List of Contacts sent letter and LDF Consultation Document

Organisation
Arlecdon & Frizington Parish Council
Bootle Parish Council
Cleator Moor Library
Cleator Moor Town Council
Copeland Borough Councillors
Cumbria County Councillors in Copeland
Daniel Hay Library
Distington Library
Distington Parish Council
Drigg & Carleton Parish Council
Egremont Charles Edmonds Library
Egremont Town Council
English Heritage
Ennerdale and Kinniside Parish Council
Environment Agency
Eskdale Parish Council
Frizington Library
Gosforth Library
Gosforth Parish Council
Government Office North West
Haile and Wilton Parish Council
Hensingham Library
Kells Library
Lamplugh Parish Council
Lowca Parish Council
Lowside Quarter Parish Council
Millom Library
Millom Town Council
Millom Without Parish Council
Mirehouse Library
Moresby Parish Council / Parton Parish Council
Muncaster Parish Council
Natural England
Natural England
Natural England - Conservation Office
Parton Parish Council
Ponsonby Parish Council
Seascale Library
Seascale Parish Council
St Bees Library
St Bees Parish Council
St Bridget's Beckermest Parish Council
St John's Beckermest Parish Council
The Planning Inspectorate
Thornhill Library
Ulpha (Parish Meeting)
Waberthwaite Parish Council
Wasdale Parish Meeting
Weddicar Parish Council
Whicham Parish Council
Winscales Parish Council

Appendix E - List of Contacts sent letter only

Organisation	
	Connexions
4NW	Co-ordinated Group Publications
Acorus Rural Property Services	Copeland Homes
Adams Holmes Associates	CORE
Age Concern Millom & District	Council for British Archaeology
Age Concern Northwest Cumbria	Country Land & Business Association
Aggregate Industries	Crime & Disorder Reduction Partnership
Airport Operators Association	Crown Estate Office
	Cumbria & Lancashire Strategic Health Authority
Alco Waste Management	Cumbria Affordable Housing Group
Allerdale Borough Council	Cumbria Association of Local Councils
Amec Civil Engineering Ltd	Cumbria Biodiversity Partnership
Anchor Housing Association	Cumbria Bridleways Society
Ancient Monuments Society	Cumbria Chamber of Commerce & Industry
Andrew Green Chartered Surveyors	Cumbria Chamber of Commerce and Industry
Askam & Ireleth Parish Council	Cumbria Childminding Association
Associated British Ports	Cumbria Constabulary
Atisreal Ltd	Cumbria County Council
Barratt Manchester	Cumbria CVS
Barrow in Furness Borough Council	Cumbria Cycling Club
	Cumbria Federation of Young Farmers
Big Tree Planning	Cumbria Highways
	Cumbria RIGS Group
Borrowdale & St John's Parish Council	Cumbria Rural Enterprise Agency
Briery Homes Ltd	Cumbria Rural Housing Trust
British Chemical Distributors & Traders Association	Cumbria Strategic Partnership
British Council	Cumbria Tourism
British Gas Ltd	Cumbria Village Homes
British Geological Survey	Cumbria Vision
British Telecommunications	Cumbria Waste Management Ltd
British Toilet Association	Cumbria Wildlife Trust
British Waterways (NW Region)	Cumbria Woodlands Trust
British Wind Energy Association	Cumbria Youth Alliance
Broadway Mallon	David Walker Surveyors
BT Group Plc	De Pol Associates
BTCV	Dean Parish Council
BTCV Cumbria MV	Department for Business, Enterprise and Regulatory Reform
Buttermere Parish Council	Department for Children, Schools & Families
Campaign for Dark Skies	Department for Culture, Media and Sport
Campaign for Real Ale	Department for Environment, Food & Rural Affairs
Capita DBS	Department for Innovation, Universities & Skills
Capital Aluminium Extrusions Ltd	Department for Transport
CBI	Department of Energy and Climate Change
Centre for Ecology & Hydrology	Department of Health
Centre for Ecology and Hydrology	Department of Work & Pensions
Chemical Business Association	Dev Plan UK
Church Commissioners	Disabled Persons Transport Advisory Committee
Churches Trust for Cumbria	District Valuer
Civil Aviation Authority	Dixon Webb
Cleator Moor Chamber of Trade	Donaldsons
Colin Buchanan & Partners	DPDS Consulting Group
Colliers CRE	DPP
Commission for Architecture & Built Environment	Drivers Jonas
Commission for Racial Equality	
Communities and Local Government (DCLG)	

Drivers Jonas	Millom and Haverigg Economic Development Group
Duddon Estuary Partnership	Millom Chamber of Trade
Duddon Parish Council	Millom Tourism Group
E.ON Ltd	Millom Without Parish Council
EDF Energy PLC	Millom Without Parish Council
Egremont and Area Regeneration Partnership	Ministry of Defence
Egremont Chamber of Trade	Ministry of Defence - Defence Estates
Egremont Town Council	Ministry of Justice
Electricity North West Limited	MJN Associates
Enterprise Whitehaven	Mobile Operators Association
EON UK Plc	Morrisons
Equality and Human Rights Commission	Mr Chris Davies MEP
Federation of Cumbrian Amenity Societies	Mr J Reed MP
Flora Locale Northern Office	Mr R Mulholland
Forestry Commission	N Power Ltd
Forestry Commission - NW England Forest District	Nathaniel Lichfield & Partners
Freight Transport Association Northern Region	National Air Traffic Services
Friends of the Earth	National Farmers Union NW Region
Friends of the Earth (North West)	National Grid
Friends of the Lake District/CPRE	National Playing Fields Association
Fuller Peiser	National Power Plc
Fusion	National Trust (North West Region)
Government Office North West	NHS Cumbria
Gypsy Council	North Cumbria Community Transport
Halcrow Group Ltd	North Cumbria HAZ
Halcrow Group Ltd	North Cumbria University Hospitals NHS Trust
Health and Safety Executive	North West Development Agency
Help the Aged	North West Development Agency
HFT Gough & Co	Northern Rail Ltd
Highways Agency	NORWEB plc
HM Nuclear Installations Inspectorate	Nuclear Decommissioning Authority
HM Prison Service (North West Area)	O2 Ltd
HMP Haverigg	Office of Government Commerce
Home Builders Federation	Orange Ltd
Home Housing Association	Paul & Company Chartered Surveyors
Home North West	Paul Butler Associates
Home Office	Paul Butler Associates
Homes and Communities Agency	Peacock & Smith
Housing Corporation	Persimmon Homes Lancashire
HOW Planning LLP	Powergen plc
Huntsman	RAC Motoring Services
Hutchison 3G UK Ltd	Radioactive Waste Management Advisory Commission
Impact Housing Association	Regen NE Copeland
Institute of Directors North West	Road Haulage Association
Invest in Cumbria	Romar Workwear Ltd
Irton with Santon PC	Royal Mail Property Group
JMP Consulting	RSPB
Jones Day	RSPB (North West England)
JPL Planning, Transport, Project Consultancy	RSPB (Northern England Region)
JWPC Ltd	Rural Regeneration Company
Kangol Ltd	Rural Women's Unit
King Sturge LLP	RWE npower Renewables
Lake District Estates Co Ltd	S Brannan & Sons
Lake District National Park Authority	Sanderson Weatherall
Lakes Parish Council	Scottish and Southern Energy PLC
Lambert Smith Hampton	Scottish Power Ltd
Land Restoration Trust	Sellafield Ltd
Learning and Skills Council	SERCO
Loweswater Parish Council	Smurfit Composites

Solway Firth Partnership	UK Nirex Ltd
South Lakeland District Council	UKAEA
South Whitehaven Partnership	United Utilities
Sport England - North West Region	United Utilities Property Solutions
Stagecoach North West	Vodafone Ltd
Steven Abbott Associates	Vodafone Ltd
Storeys : SSP	Voluntary Action Cumbria
Story Homes	W3M
Stuart Ross Associates	Walton & Co
Sure Start	Wardell Armstrong
Sustainability North West	West Cumbria & Barrow Sport Action Zone
Sustrans	West Cumbria Crime and Disorder Partnership
T Mobile UK Ltd	West Cumbria Development Agency
Tarmac Northern Ltd	West Cumbria Development Fund
Taylor Wimpey UK Ltd	West Cumbria Federation of Small Businesses
Tesco Stores Ltd	West Cumbria Society for the Blind
The British Horse Society	West Cumbria Strategic Partnership
The Coal Authority	West Cumbria Vision
The Development Planning Partnership	West Lakes Renaissance
The Diocese of Lancaster	Western Lake District Tourism Partnership
The Garden History Society	Westlakes Properties Ltd
The Georgian Group	Westlakes Research Institute
The Lawn Tennis Association	Whitehaven & District Chamber of Trade
The Maritime and Coastguard Agency	Whitehaven Civic Society
The Post Office Property Holdings	Whitehaven Community Trust
The Ramblers Association	Whitehaven Congregation of Jehovah's Witnesses
The Society for the Protection of Ancient Buildings	Whitehaven Harbour Commissioners
The Theatres Trust	Whitehaven Heritage Action Group
The Twentieth Century Society	Whitehaven Regeneration Steering Group
The Victorian Society	Whitehaven Task Group
Tornado Wire	Whitehaven Town Centre Group
Transco	Wm. Morrison Supermarkets Plc
Transport 2000	Women's National Commission
Traveller Law Reform Coalition	Workington Town Council
Traveller Law Reform Project	X-Press Legal Services
Tribal MJP	Young Cumbria
Turley Associates	
Two Castles Housing Association	

Appendix F – Copeland Borough Council web pages

Figure 1: Copeland Borough Council Home Page

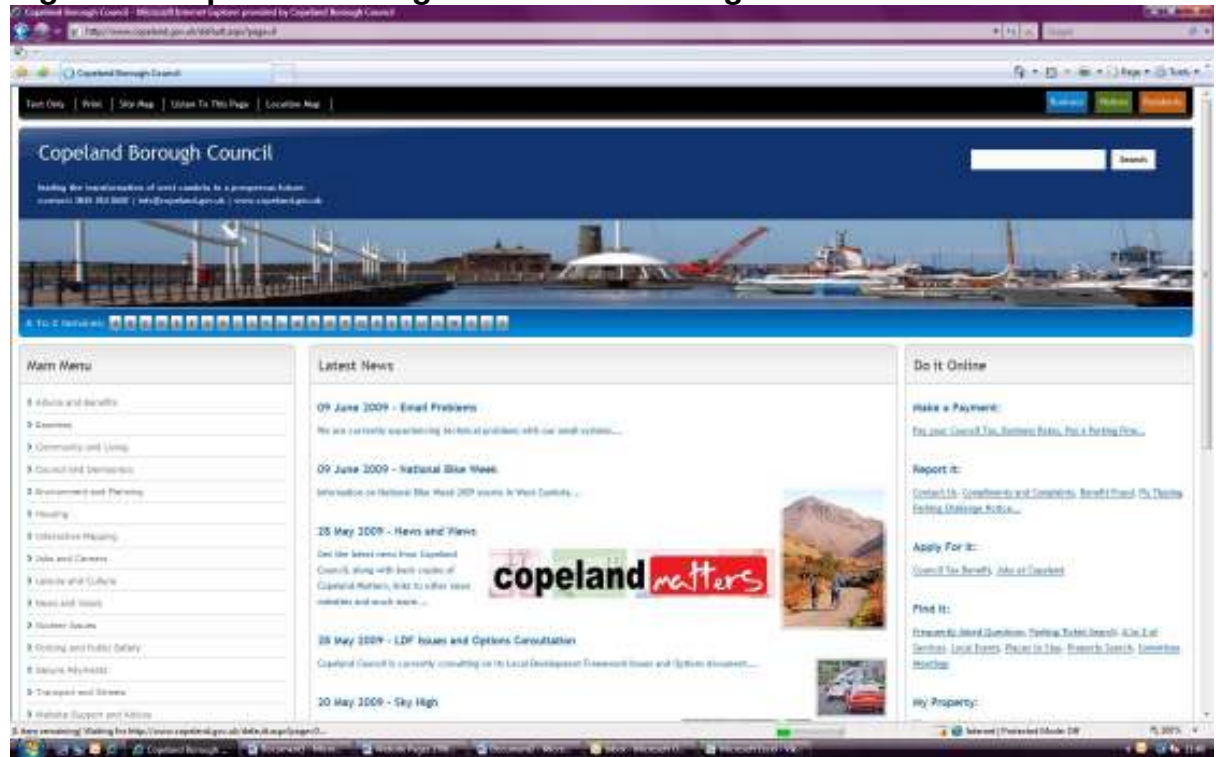


Figure 2: Planning Policy Pages of Copeland Borough Council website

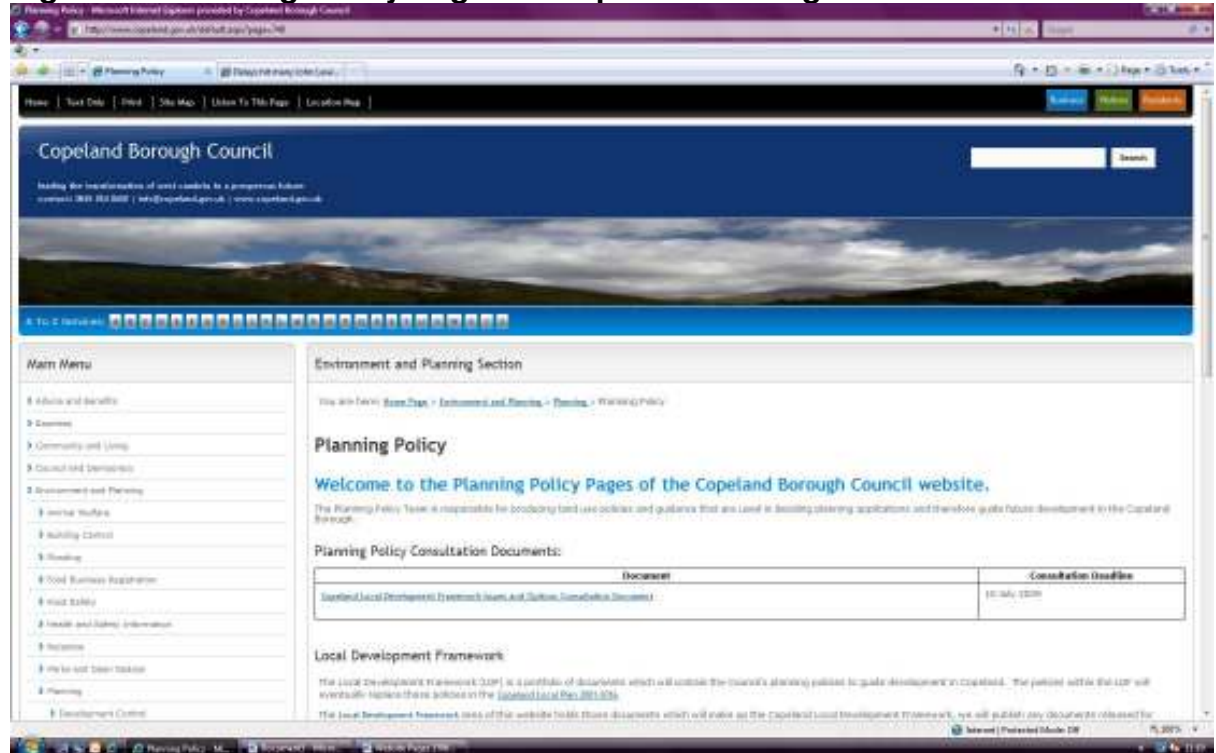
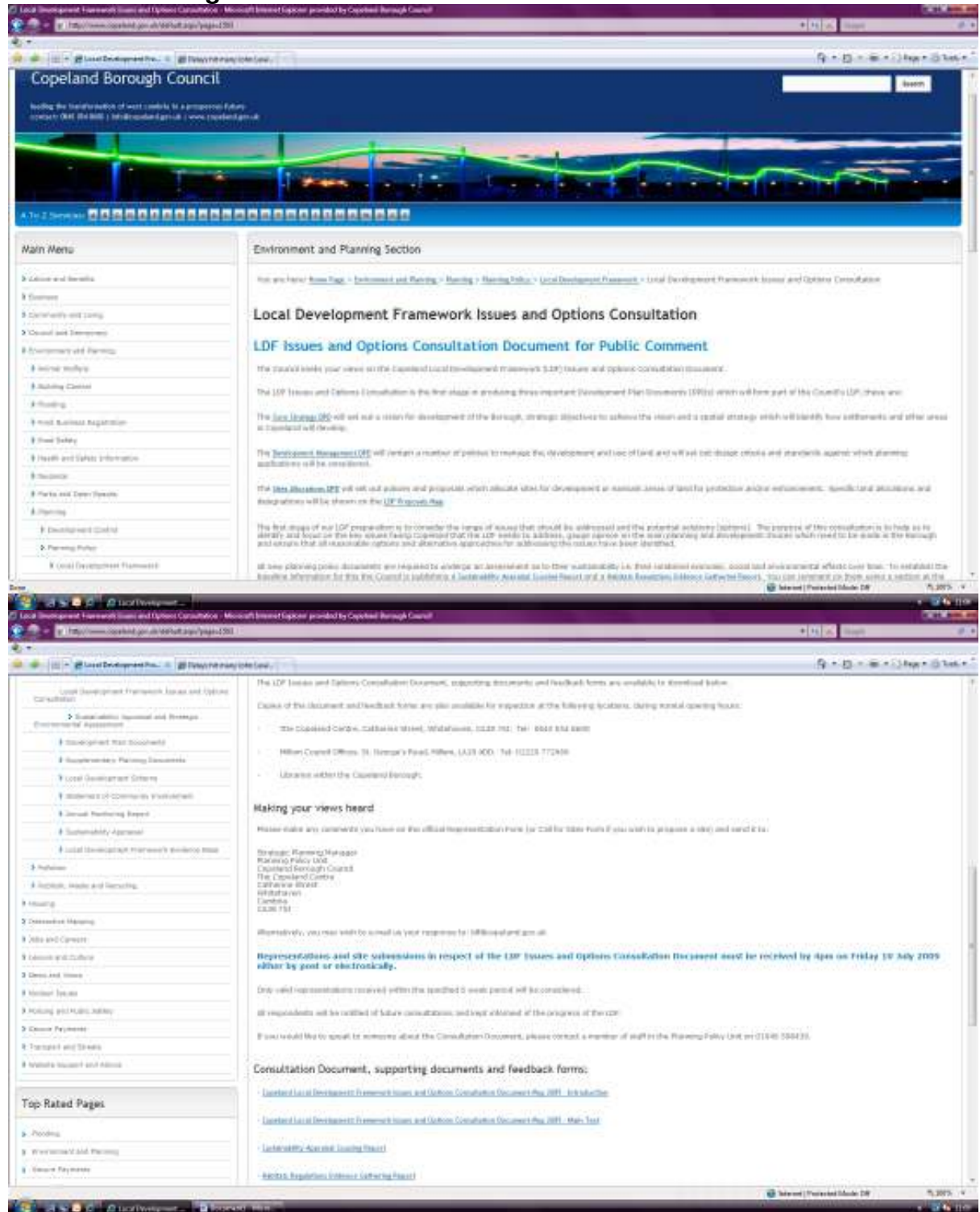


Figure 3: Local Development Framework Issues and Options Consultation Page



Appendix G- Copeland Neighbourhood Forums

The following Copeland Neighbourhood Forums were attended.

FORUM AREA	DATE OF MEETING	TIME
BOOTLE & SEASCALE	Tuesday 16 th June 2009	7.00pm
GOSFORTH & ENNERDALE	Monday 22 nd June 2009	7.00pm
BRANSTY & HARBOUR	Tuesday 23 rd June 2009	7.00pm
ARLECDON & FRIZINGTON	Monday 29 th June 2009	6.30pm
EGREMONT & ST. BEES	Tuesday 7 th July 2009	6.30pm
CLEATOR MOOR	Thursday 9 th July 2009	6.30pm
SOUTH WHITEHAVEN	Wednesday 15 th July 2009	7.00pm
HILLCREST & HENSINGHAM	Thursday 16 th July 2009	6.30pm
MILLOM	Monday 20 th July 2009	7.00pm
NORTH WEST COPELAND	Wednesday 22 nd July 2009	7.00pm

n

'PREFERRED OPTIONS' STAGE

Local Development Framework Preferred Options Consultation 10 May 2010 – 30 July 2010

Introduction

The LDF Preferred Options document was published on the 10 May 2010 for a period of consultation. The original deadline for comments was 2 July but this was extended to the end of July to allow for a public meeting taking place in Millom in mid July and also to allow those affected by the tragic events of the 2nd June extra time to respond.

The Preferred Options document was prepared to cover both the Core Strategy and the Development Management Policies DPDs but deals with these separately in two distinct sections of the document.

The Consultation Process

The Planning Policy team maintains a Local development Framework Consultation database. The database contains the contact details of Members, Officers at other Authorities, various NGOs, statutory consultees, developers / agents and members of the public. Anyone can ask to have their contact details added to or removed from the database.

Letters were sent to all consultees at the beginning of the consultation period telling them that the document was available on the Council's website and inviting them to comment on the document. In order to conserve resources, copies of the Preferred Options document were only sent out to Members, Parish Councils and statutory consultees. Additional copies were left at all Council Offices and public libraries in the borough.

The consultation period was publicised in both the Whitehaven News and the Spring edition of Copeland Matters, the Council's quarterly newsletter that is delivered to every household in the Borough.

they paid him £100, only to witness the man jump into a waiting Volkswagen Passat

want to warn other people not to be taken in by this scam."

Future planning policies

BY MARGARET CROSBY

A RAFT of documents which set out how land can be used in Copeland over the next 17 years is currently being formulated and the public are asked for their views.

Known as the Local Development Framework (formerly called the Local Plan), the documents set out the council's planning policies to deal with new development up until the period 2027.

When formally adopted they will replace the existing Copeland Local Plan. They cover the part of the borough outwith the National Park (over which the Lake District National Park has jurisdiction).

An eight week period of public consultation will begin on May 6. This will involve a wide circulation of the document and summary leaflets together with presentations, public meetings and events.

MOA
T

BY
PO
lar
for
PR
in
co
nl

Whitehaven News – 29 April 2010

Help us plan Copeland's future

Copeland Borough Council is currently preparing an important plan that will influence development over the next 20 years.

It's called the Local Development Framework, or LDF, and it focuses on where and how much new development should take place.

We have published a discussion document and we'd like to share it with you. Over the next 8 weeks, you will have the chance to tell us what you think of our proposals. Your comments will make a big difference to the final version. If you want to get involved please visit the Copeland Borough Council website and look out for the Copeland LDF Preferred Options Report.

Paper copies are available at all the Council's offices and all the libraries in the Borough during normal opening hours.

Comments will also be published on the website and sent to you by email on 27 July 2010. You can get paper copies from the Council offices and libraries or by contacting the Planning Policy department on 02283 506251.

Mr A J Don 07976

11

Speak out

YOUR views are needed by Copeland Council as part of changes it is making to planning policy for the borough.

The authority is preparing a new Local Development Framework – a collection of documents that will replace its current local plan.

And now the council is publicly consulting on its preferred options and asking for views on areas such as infrastructure improvements and environmental standards.

Coun Geoff Blackwell, portfolio holder for planning, said: "The Preferred Options document sets the scene for future development in Copeland. The government has changed the system of development planning in the country, and this document will be part of our new approach in Copeland.

"It is wide-ranging and covers a number of issues that people will be interested in."

To have your say visit the Copeland Council website, www.copeland.gov.uk and look for the 'Copeland LDF Preferred Options Report'.

Download a Representation Form from the website and email it back to ldf@copeland.gov.uk before July 2.

Paper copies are available at all the council's offices and libraries.

Whitehaven News – 27 May 2010

VIEWS SOUGHT

Your planning views sought on radical changes to planning policy

- Should climate change influence planning policy?
- Should we support energy development outside our towns and villages?
- Should most new developments be in Whitehaven?

The way we make planning decisions raises big questions for us all and want to hear from you.

A new document will set out how we approach planning policy, and in creating it we want your views on questions like:

- Should infrastructure improvements be secured as part of any future developments?
- What environmental standards should we demand in new housing?

The "Preferred Options" document we are asking you about will outline our approach to these issues and more, and will eventually become part of the new Local Development Framework – a suite of documents replacing the current local plan.

Cllr Geoff Blackwell, the Council's Portfolio Holder for planning, said: "The Preferred Options document sets the scene for future development in Copeland. It is wide-ranging and covers a number of issues people will be interested in."

"We're keen for as many people as possible to have their say, so we can ensure Copeland's new Local Development Framework is robust, and meets the borough's development needs for many years to come."

The Preferred Options document is the second major step in preparing a new planning framework for Copeland. It follows the consultation on an Issues and Options paper last year.

Your views on this earlier paper were used to shape the new Preferred Options document. This document is being published now so you can see how we took your views into account and give your views on this latest stage.

"The Preferred Options document will be published in the next few weeks, and there will be eight weeks for you to have your say in a range of ways - including online, filling the response form, or sending your comments to ldf@copeland.gov.uk. Public meetings will also be arranged, and an easy-to-understand leaflet will be available



Copeland Matters – Spring edition

Additionally a special pull-out leaflet was inserted in the Summer edition of Copeland Matters. The leaflet described briefly, in layman's terms, the purpose of the Preferred Options document and what impact the preferred policy direction would have for communities in each locality.

Public Meetings

Five public meetings were organised, one in each of the borough's localities to introduce the document and give members of the public a chance to ask questions and express views verbally. Presentation boards displayed more detailed information regarding possible uses for particular sites to help illustrate how Core Strategy policies and proposals might be applied on the ground.

Despite advertising the dates, times and venues for the public meetings (see below) there was a very modest turnout at the Egremont, Cleator Moor, Mid Copeland and Millom meetings. The Whitehaven meeting was well attended largely due to the strength of feeling around the possible development of land adjacent to the Bay Vista residential area. (Site allocations will be the subject of future consultations during the preparation of the Site Allocations DPD due for publication in 2011/12.) There are a number of possible reasons for the low turnout at the other meetings, not least the recent tragic events of June 2nd only two weeks before the first event in Egremont on the 17th June.

Use only for...
wasting resources and objectives
Head of Legal Services, 9 June 2010

Help us plan
Copeland's future

Copeland Borough Council is currently preparing an important plan that will influence development over the next 15 years and we would like to share our ideas with you. Come along to your nearest public meeting to find out how our plans will affect your area and how you can get involved.

West Copeland - Egremont Market Hall
17th June at 7.00pm

Whitehaven - Whitehaven Civic Hall
22nd June at 7.00pm

Mid Copeland - Seascale Methodist Hall
24th June at 7.00pm

North East Copeland - Clinstor Moor Civic Hall
29th June at 7.00pm

South Copeland - Millom Network Centre
13th July at 7.00pm

If you have any questions about any of the public meetings, please contact us on 01646 588251

Times of public meetings

Planning Aid Event

Planning Aid North held an event for Schools in Millom on the 13th July as a means of engaging children in the process of plan making. Officers did not attend the event as Planning Aid prefers to act independently of Local Planning Authorities, helping them to remain an impartial source of advice for members of the public and community groups. A report describing the outcomes of this exercise is expected very soon. Initial verbal feedback was very positive. The children were very receptive to the idea of planning and place shaping with transport issues around the Millom area being cited by pupils.

Another Planning Aid event had been planned to take place in Whitehaven on 22nd June. This event was to take place over 2 days, with one half day session for adult community groups and two shorter sessions for Whitehaven schools (both primary and secondary). Despite significant efforts on the part of Planning Aid to invite various community groups and schools, there was a very limited response and the event was cancelled. Again this was partially down to unfortunate timing. Planning Aid are staying in contact with Whitehaven schools and future events have been discussed although no dates have yet been agreed.

Consultation Responses

Over 400 comments were received from 51 different respondents. These responses have been collated according to subject area so that comments on related core strategy and development management preferred options can be considered together.

